

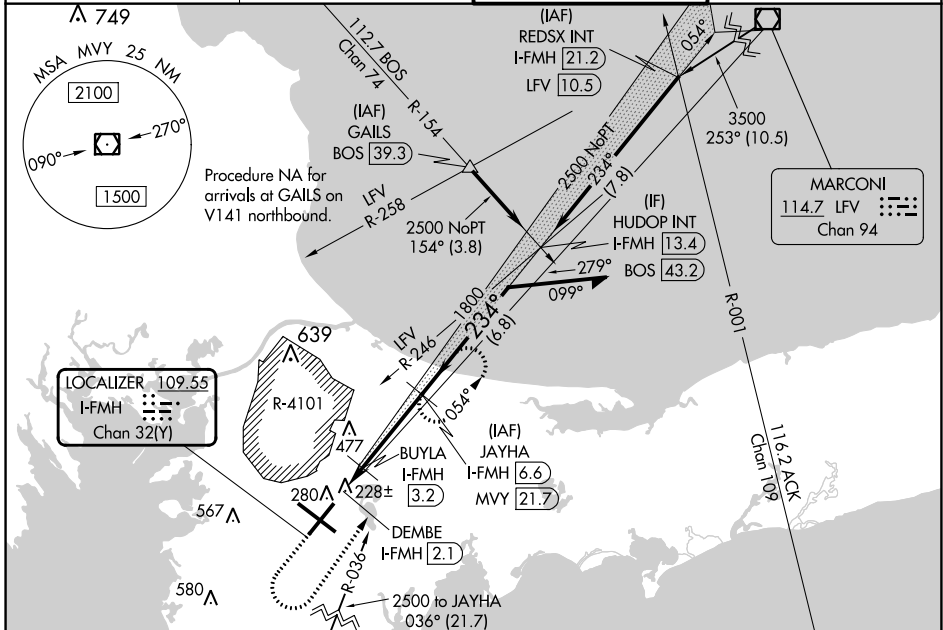
LOC/DME I-FMH 109.55 Chan 32(Y)	APP CRS 234°	Rwy Idg TDZE 126 Apt Elev 130	8000
---	------------------------	---	-------------

COPTER ILS Y or LOC Y RWY 23

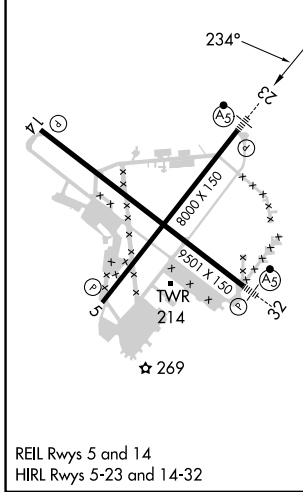
CAPE COD COAST GUARD AIR STATION (F'MH)

DME required. For inop ALS increase, H-ILS 23 and H-LOC 23 visibility to RVR 2400. United States Coast Guard only.	MALSR 	MISSED APPROACH: Climb to 1400 then climbing left turn heading 050° and M'VY VOR/DME R-036 to 3000 direct JAYHA and hold.
--	-----------	---

ATIS 120.475 236.825	BOSTON APP CON 118.2 284.6	COAST GUARD TOWER 128.425 291.1	GND CON 124.15 275.8
--------------------------------	--------------------------------------	---	--------------------------------



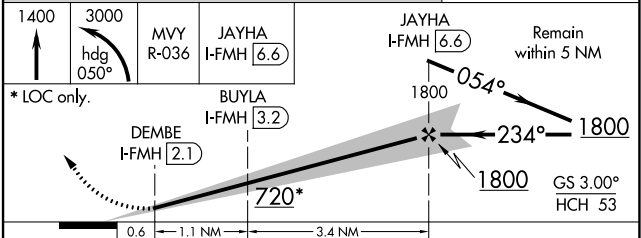
ELEV 130	TDZE 126
----------	----------



MARTHAS VINEYARD
114.5 M'VY Chan 92

ALTERNATE MISSED APCH FIX
GLESO
054° / 234°
7 NM

NOT FOR CIVIL USE



CATEGORY	COPTER	
H-ILS 23	226/12	100 (100-¼)
H-LOC 23	480/12	354 (400-¼)

NE-1, 31 OCT 2024 to 28 NOV 2024

NE-1, 31 OCT 2024 to 28 NOV 2024