

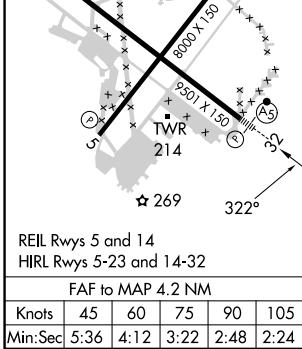
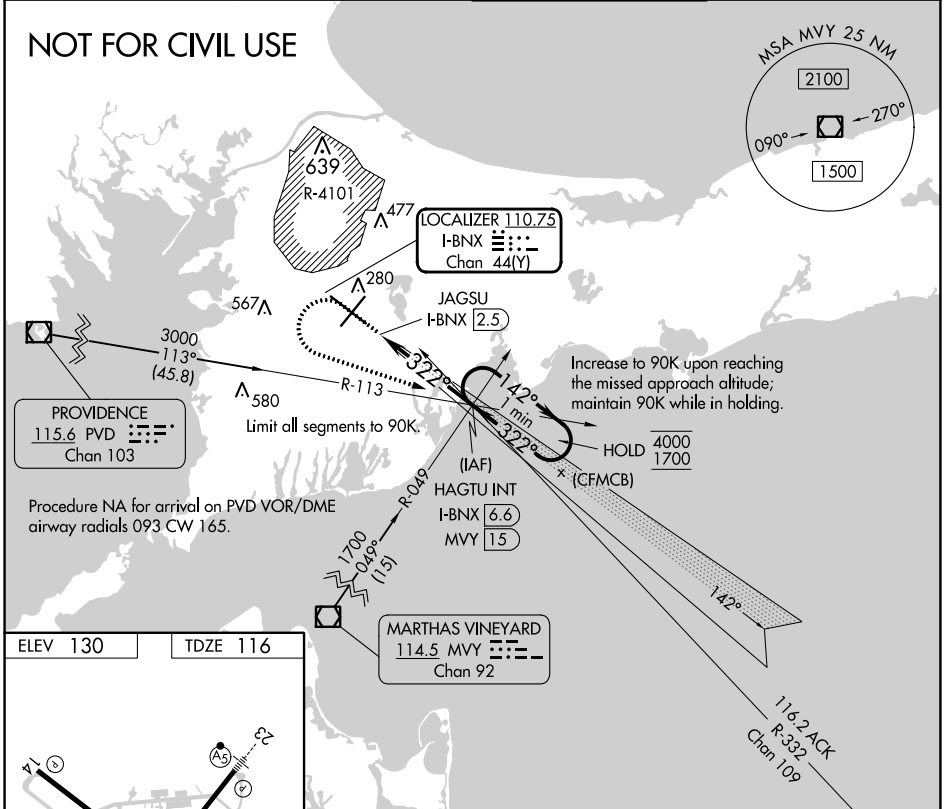
LOC/DME I-BNX 110.75 Chan 44(Y)	APP CRS 322°	Rwy Idg TDZE Apt Elev	9501 116 130
---	------------------------	-----------------------------	---

COPTER ILS Y or LOC Y RWY 32

CAPE COD COAST GUARD AIR STATION (F'MH)

<p>NA U.S. Coast Guard use only. For inop ALS, increase visibility to RVR 2400.</p>	MALSR 	MISSED APPROACH: Climb to 1400 then climbing left turn to 2000 on heading 123° and I-BNX localizer SE course to HAGTU INT/I-BNX 6.6 DME and hold.	
	<p>ATIS 120.475 236.825</p>	<p>BOSTON APP CON 118.2 284.6</p>	<p>COAST GUARD TOWER 128.425 291.1</p>

NOT FOR CIVIL USE



1400	2000	I-BNX SE crs	HAGTU INT	HAGTU INT I-BNX 6.6 MVY 15	One Minute Holding Pattern
↑	hdg 123°				
Use I-BNX DME when on the localizer course.					
		<p>HAGTU INT I-BNX 6.6 MVY 15</p> <p>1700</p> <p>142° → 4000 ← 322°</p> <p>← 322° → 1700</p> <p>GS 3.00° TCH 50</p>			
CATEGORY			COPTER		
H-ILS 32		216/12		100 (100-¼)	
H-LOC 32		520/12		404 (400-¼)	

NE-1, 31 OCT 2024 to 28 NOV 2024

NE-1, 31 OCT 2024 to 28 NOV 2024