

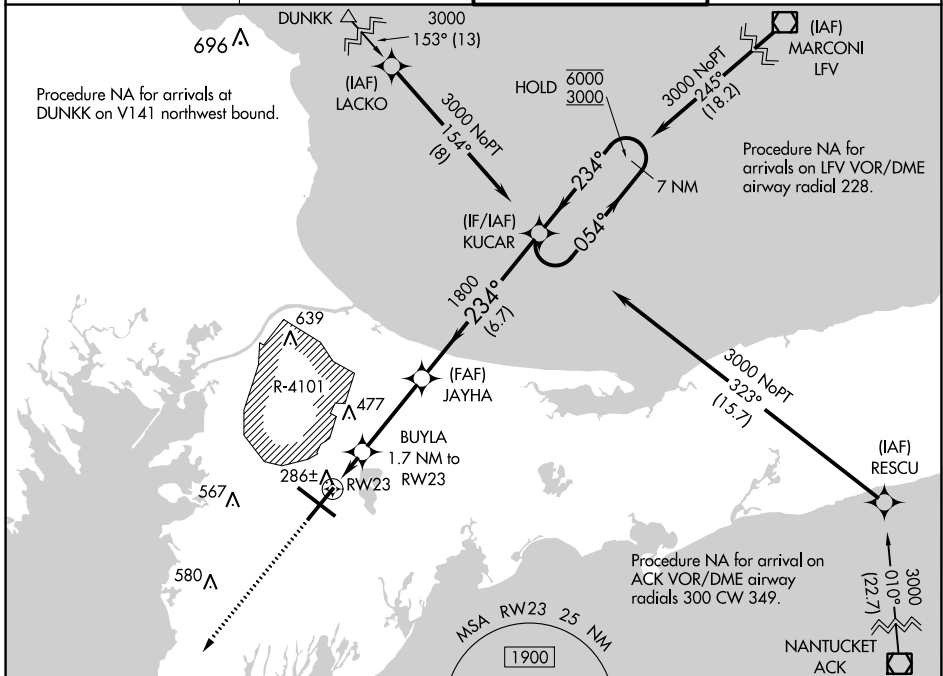
WAAS CH 97337 W23A	APP CRS 234°	Rwy Idg TDZE Apt Elev	8000 126 130
--	------------------------	-----------------------------	---

RNAV (GPS) RWY 23

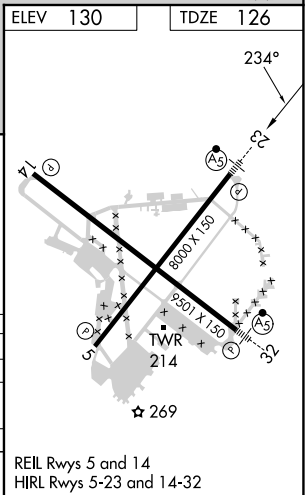
CAPE COD COAST GUARD AIR STATION (F'MH)

RNP APCH. ▲ For uncompensated Baro-VNAV systems, procedure NA below -15°C or above 54°C. Circling NA NE of Rwy 14 and NW of Rwy 23. For inop ALS, increase LNAV/VNAV all Cats visibility to RVR 5500 and LNAV Cats C and D visibility to RVR 6000.	MALSR 	MISSED APPROACH: Climb to 3000 direct GLESO and hold.
--	-----------	--

ATIS 120.475 236.825	BOSTON APP CON 118.2 284.6	COAST GUARD TOWER 128.425 291.1	GND CON 124.15 275.8
--------------------------------	--------------------------------------	---	--------------------------------



ELEV 130	TDZE 126			
3000	GLESO *LNAV only.	KUCAR 7 NM Holding Pattern		
 *1.1 NM to RWY 23 BUYLA 1.7 NM to RWY 23 JAYHA 1800 KUCAR 7 NM Holding Pattern 054° → 6000 ← 234° 3000 GP 3.00° TCH 54				
CATEGORY	A	B	C	D
LPV DA	326/24 200 (200-½)			
LNAV/VNAV DA	467/30 341 (400-¾)			
LNAV MDA	540/24 414 (500-½)	540/40 414 (500-¾)		
CIRCLING	580-1 450 (500-1)	640-1 510 (600-1)	900-2¼ 770 (800-2¼)	900-2½ 770 (800-2½)



REIL Rwy 5 and 14
HIRL Rwy 5-23 and 14-32

NE-1, 31 OCT 2024 to 28 NOV 2024

NE-1, 31 OCT 2024 to 28 NOV 2024