

| | | | |
|--|------------------------|-----------------------------|---|
| WAAS CH 53338 W34A | APP CRS 341° | Rwy Idg TDZE Apt Elev | 3900 2071 2073 |
|--|------------------------|-----------------------------|---|

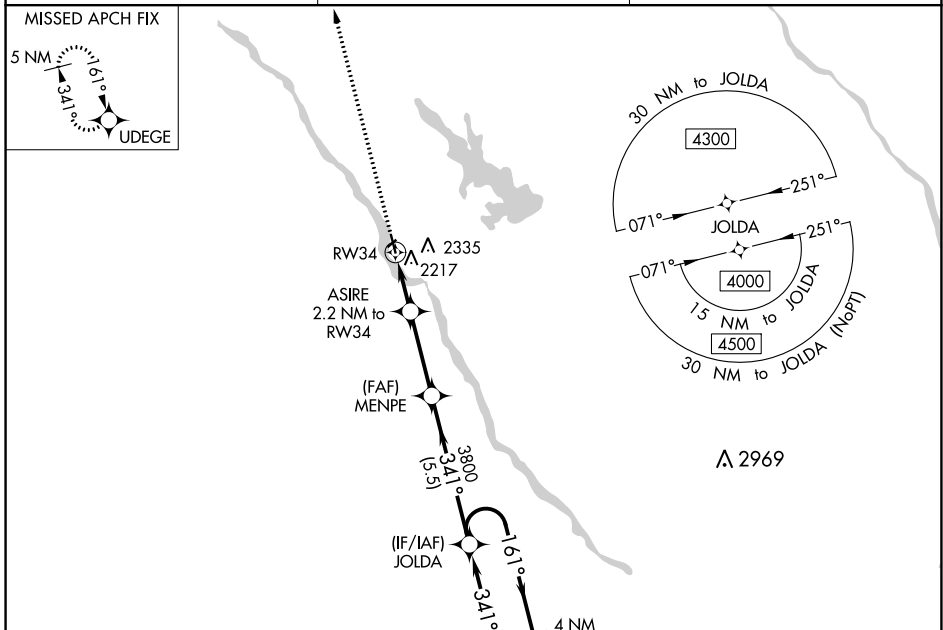
RNAV (GPS) RWY 34

LOUP CITY MUNI (ØF4)

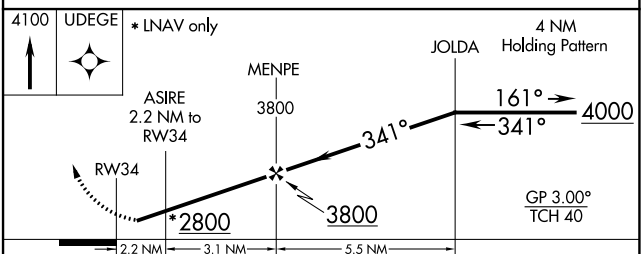
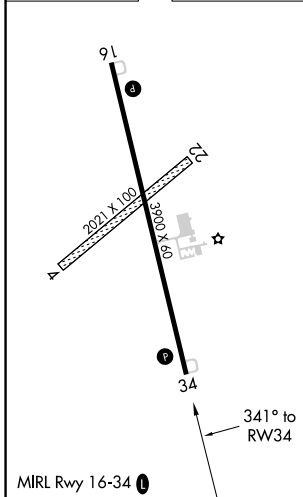
NA DME/DME RNP-0.3 NA. Baro-VNAV NA. Use Evelyn Sharp Field altimeter setting; when not received, use Broken Bow altimeter setting and increase LPV DA to 2459 and all visibilities $\frac{3}{8}$ mile, LNAV/VNAV DA to 2500 and all visibilities $\frac{3}{8}$ mile; increase all MDA 100 feet. Helicopter visibility reduction below 1 SM NA. Circling NA to Rwy's 4 and 22.

MISSED APPROACH:
Climb to 4100 direct UDEGE and hold.

| | | |
|----------------------------|---|------------------------|
| ODX ASOS 119.925 | MINNEAPOLIS CENTER 126.05 278.8 | CTAF 122.9 0 |
|----------------------------|---|------------------------|



| | |
|-----------|-----------|
| ELEV 2073 | TDZE 2071 |
|-----------|-----------|



| CATEGORY | A | B | C | D |
|-------------------|-----------------------|----------------------------|---|----|
| LPV DA | 2369-1 | 298 (300-1) | | NA |
| LNAV/VNAV DA | 2410-1 $\frac{1}{8}$ | 339 (400-1 $\frac{1}{8}$) | | NA |
| LNAV MDA | 2520-1 | 449 (500-1) | | NA |
| C CIRCLING | 2720-1 647 (700-1) | 2740-1 667 (700-1) | | NA |

NC-2, 31 OCT 2024 to 28 NOV 2024

NC-2, 31 OCT 2024 to 28 NOV 2024