

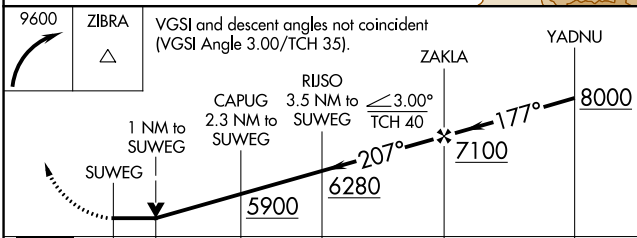
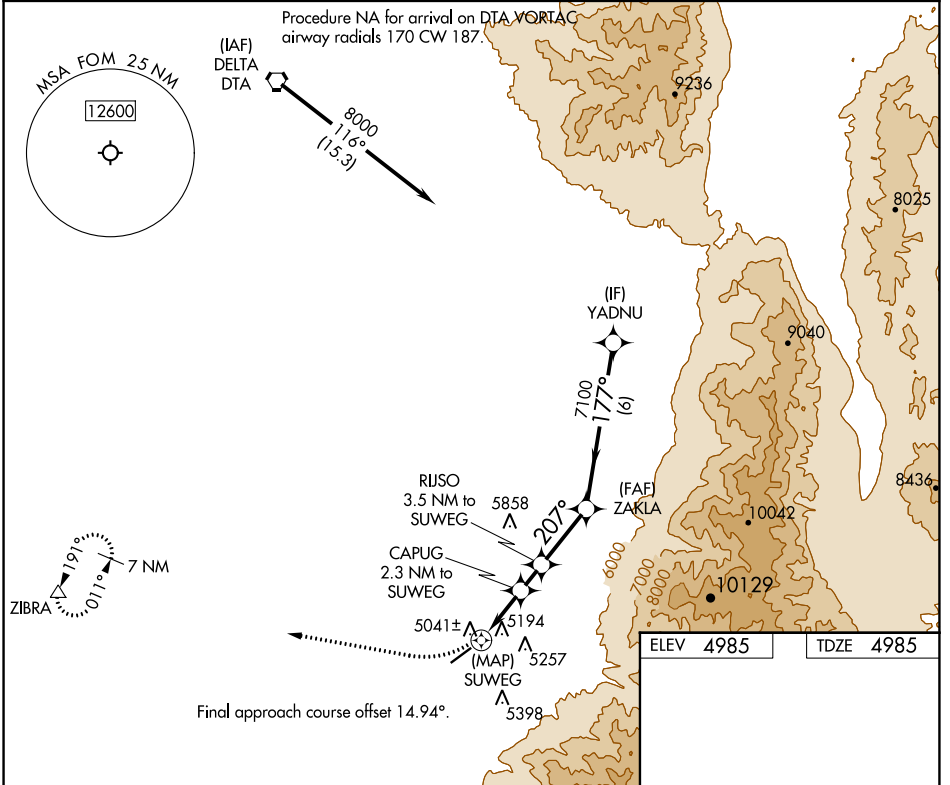
APP CRS	Rwy Idg	5040
207°	TDZE	4985
	Apt Elev	4985

RNAV (GPS) RWY 22

FILLMORE MUNI (FOM)

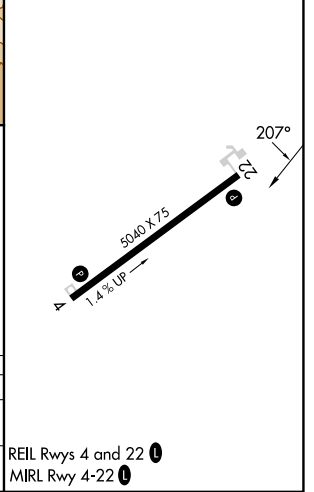
RNP APCH.	MISSED APPROACH: Climbing right turn to 9600 direct ZIBRA and hold, continue climb-in-hold to 9600.
	Rwy 22 helicopter visibility reduction below 3/4 SM NA.

AWOS-3 133.775	SALT LAKE CITY CENTER 125.575 379.275	UNICOM 122.8 (CTAF) 0
--------------------------	---	---------------------------------



ELEV 4985	TDZE 4985
-----------	-----------

9600 ZIBRA	VGSIs and descent angles not coincident (VGSi Angle 3.00/TCH 35).			
	A		B	
	C		D	
LNVA MDA	5500-1	515 (600-1)	5500-1 5/8 515 (600-1 3/8)	NA
CIRCLING	5620-1	635 (700-1)	6200-3 1215 (1300-3)	NA



SW-4, 31 OCT 2024 to 28 NOV 2024

SW-4, 31 OCT 2024 to 28 NOV 2024