

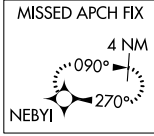
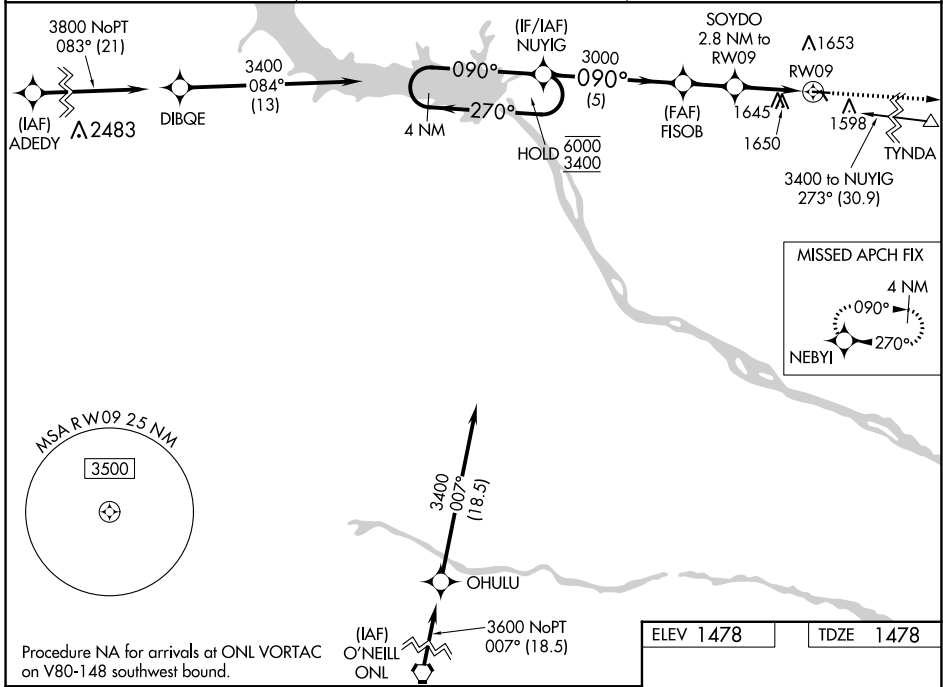
WAAS CH 53334 W09A	APP CRS 090°	Rwy Idg TDZE Apt Elev	3500 1478 1478
--	------------------------	-----------------------------	---

RNAV (GPS) RWY 9

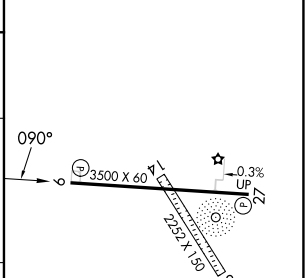
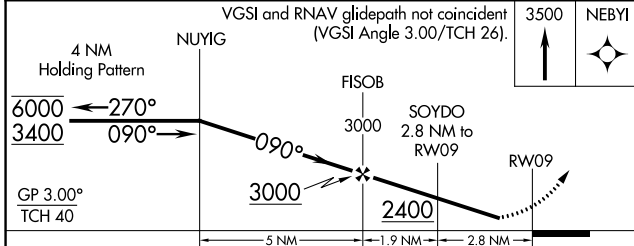
WAGNER MUNI (AGZ)

RNP APCH - GPS.	MISSED APPROACH: Climb to 3500 direct NEBYI and hold.
<p>NA Circling NA to Rwys 14 and 32. Baro-VNAV NA. Rwy 9 helicopter visibility reduction below $\frac{3}{4}$ SM NA. Use Yankton altimeter setting; when not received use O'Neill altimeter setting and increase all DAs 51 feet, all MDAs 60 feet and increase LPV all Cats visibility $\frac{1}{8}$ SM, and LNAV/VNAV all Cats visibility $\frac{1}{8}$ SM.</p>	

YKN AWOS-3PT 119.05	MINNEAPOLIS CENTER 128.0 257.95	AUNICOM 122.8 (CTAF) 0
-------------------------------	---	----------------------------------



ELEV 1478	TDZE 1478
-----------	-----------



CATEGORY	A	B	C	D
LPV DA	1847-1	369 (400-1)		NA
LNAV/VNAV DA	2053-1 $\frac{5}{8}$	575 (600-1 $\frac{5}{8}$)		NA
LNAV MDA	2020-1	542 (600-1)		NA
C CIRCLING	2080-1	602 (700-1)		NA

MRL Rwy 9-27 **0**

NC-1, 31 OCT 2024 to 28 NOV 2024

NC-1, 31 OCT 2024 to 28 NOV 2024