

APP CRS 071°	Rwy Idg TDZE Apt Elev	N/A N/A 8207
------------------------	-----------------------------	---

RNAV (GPS)-C

GRANBY-GRAND COUNTY (GNB)

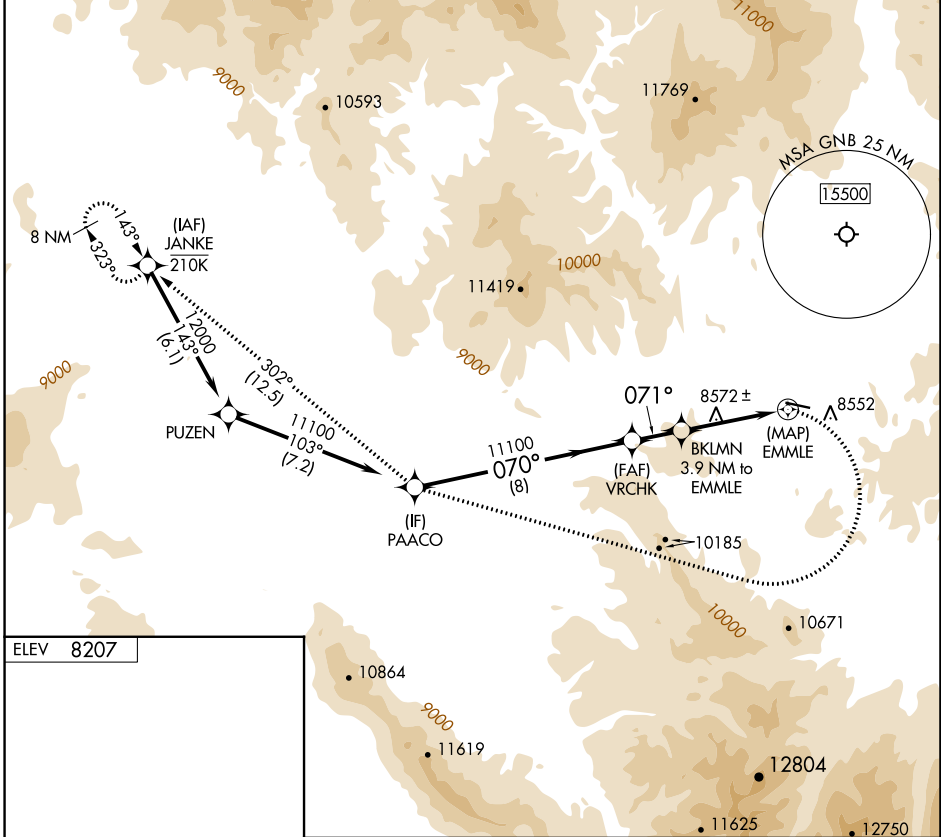
RNP APCH - GPS.

Procedure NA at night. Rwy 27 helicopter visibility reduction below 1 SM NA.

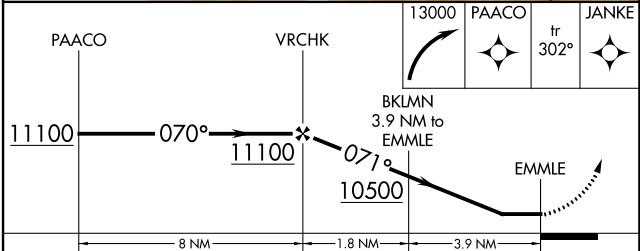
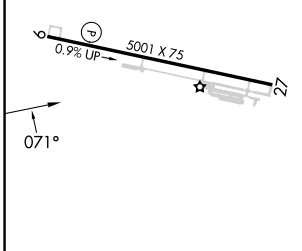
-24°C

MISSED APPROACH: (Do not exceed 165K until PAACO)
Immediate climbing right turn to 13000 direct PAACO
and on track 302° to JANKE and hold.

AWOS-3PT 119.925	DENVER CENTER 128.65 282.2	UNICOM 123.0 (CTAF)
----------------------------	--------------------------------------	-------------------------------



ELEV 8207



CATEGORY	A	B	C	D
CIRCLING	10180-1¼ 1973 (2000-1¼)	10180-1½ 1973 (2000-1½)	10180-3 1973 (2000-3)	NA

SW-1, 31 OCT 2024 to 28 NOV 2024

SW-1, 31 OCT 2024 to 28 NOV 2024