

APP CRS	Rwy Idg	5000
191°	TDZE	54
	Apt Elev	65

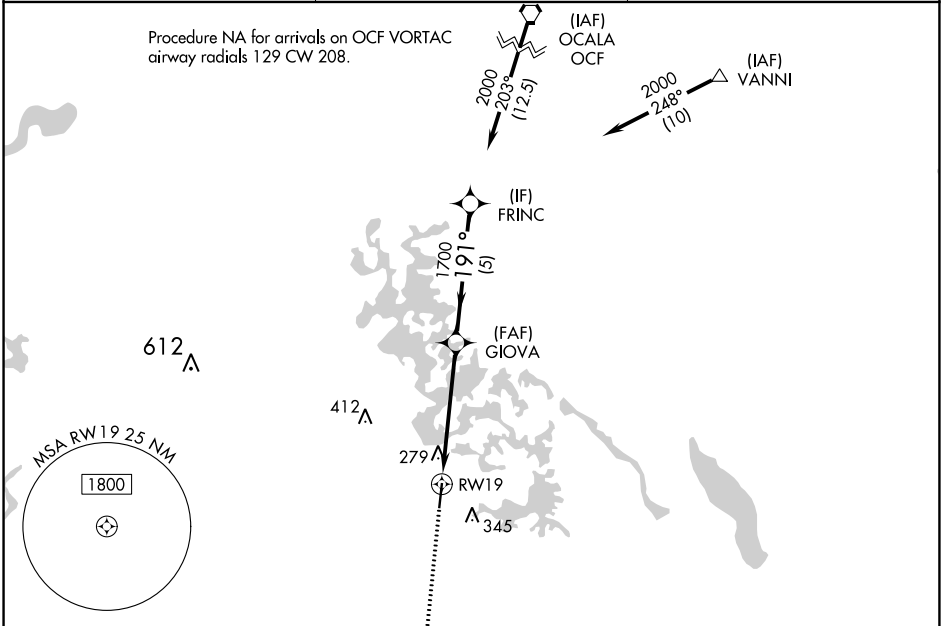
RNAV (GPS) RWY 19

INVERNESS (INF')

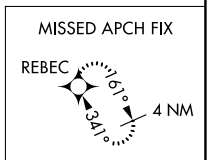
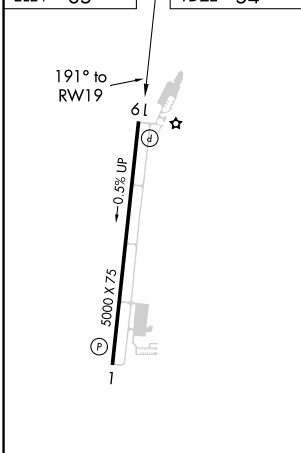
RNP APCH. MISSED APPROACH: Climb to 2000 direct BOWSK and on track 176° to REBEC and hold.

⚠️ Rwy 19 helicopter visibility reduction below 1 SM NA.

AWOS-3 119.975	JACKSONVILLE APP CON 118.6 251.15	UNICOM 122.725 (CTAF) 1
--------------------------	---	--



ELEV 65	TDZE 54
---------	---------



CATEGORY	A		B		C		D	
	580-1	526 (600-1)	580-1½	526 (600-1½)	660-1½	595 (600-1½)	660-1½	595 (600-1½)
LNAV MDA	580-1	526 (600-1)	580-1½	526 (600-1½)	660-1½	595 (600-1½)	660-1½	595 (600-1½)
CIRCLING	660-1	595 (600-1)	660-1½	595 (600-1½)	660-1½	595 (600-1½)	660-1½	595 (600-1½)

SE-3, 31 OCT 2024 to 28 NOV 2024

SE-3, 31 OCT 2024 to 28 NOV 2024