

WAAS CH <b>56637</b> <b>W25A</b>	APP CRS <b>248°</b>	Rwy Idg TDZE Apt Elev	<b>3900</b> <b>966</b> <b>966</b>
--	------------------------	-----------------------------	---

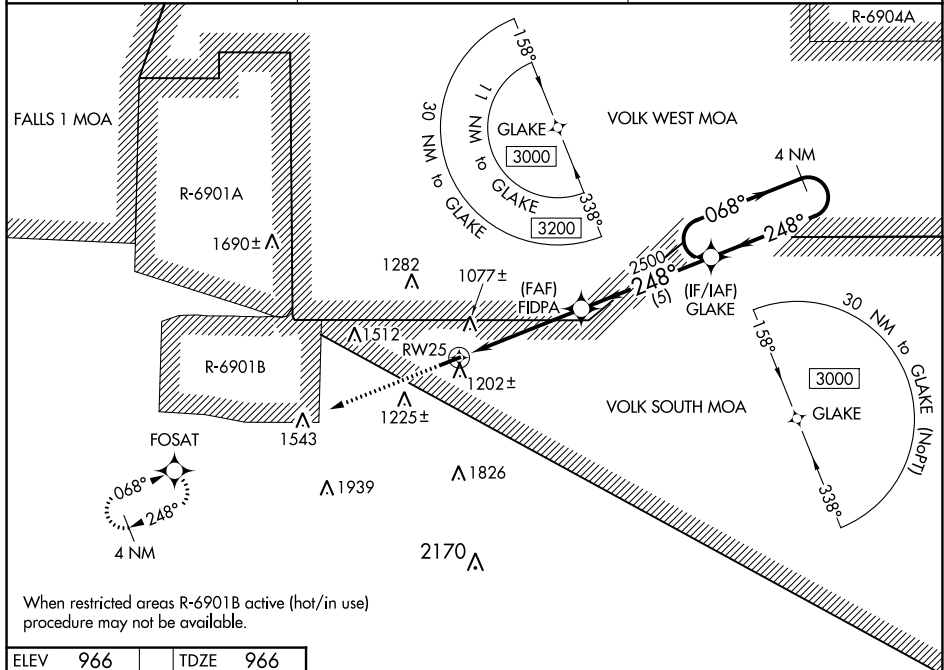
# RNAV (GPS) RWY 25

BLOYER FLD (Y72)

**NA** DME/DME RNP-0.3 NA. Use Camp Douglas altimeter setting; when not received, use Sparta/Fort McCoy altimeter setting and increase all MDA 20 feet. Helicopter visibility reduction below 1 SM NA. Procedure NA at night.

**MISSED APPROACH:** Climb to 3000 direct FOSAT and hold.

VOLK APP CON ★ <b>135.25 244.875</b>	VOLK CTAF <b>127.5</b>	CTAF <b>122.9</b>
---	---------------------------	----------------------

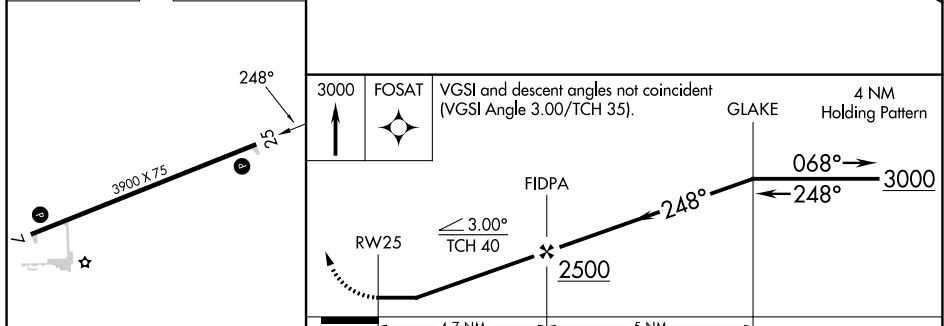


EC-3, 31 OCT 2024 to 28 NOV 2024

EC-3, 31 OCT 2024 to 28 NOV 2024

When restricted areas R-6901B active (hot/in use) procedure may not be available.

ELEV 966	TDZE 966
----------	----------



CATEGORY	A	B	C	D
LP MDA	1440-1	474 (500-1)	1440-1 <sup>3</sup> / <sub>8</sub> 474 (500-1 <sup>3</sup> / <sub>8</sub> )	NA
LNAV MDA	1480-1	514 (600-1)	1480-1 <sup>3</sup> / <sub>8</sub> 514 (600-1 <sup>3</sup> / <sub>8</sub> )	NA
<b>CIRCLING</b>	1540-1 574 (600-1)	1560-1 594 (600-1)	1660-2 694 (700-2)	NA

MIRL Rwy 7-25  
REIL Rwy 7 and 25