

APP CRS	Rwy Idg	N/A
326°	TDZE	N/A
	Apt Elev	39

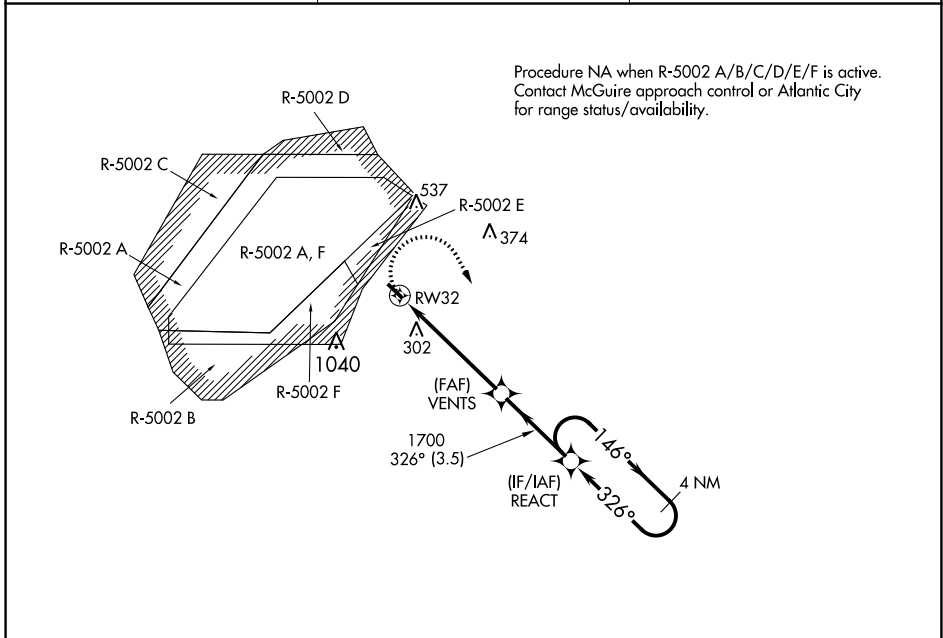
RNAV (GPS)-B

EAGLES NEST (31E)

NA DME/DME RNP-0.3 NA. Procedure NA at night. Use Toms River altimeter setting; when not received use Atlantic City altimeter setting. Helicopter visibility reduction below 1 SM NA.

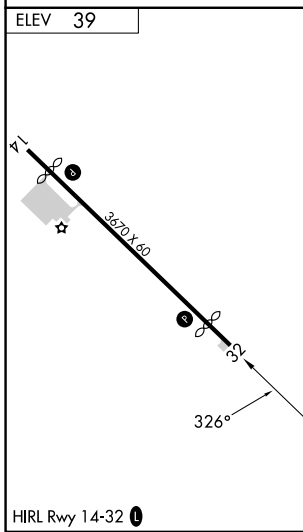
MISSED APPROACH: Climbing right turn to 2300 direct REACT and hold.

MUX AWOS-3PT 119,875	ATLANTIC CITY APP CON 134.25 292.2	CTAF 122.9 0
--------------------------------	--	------------------------



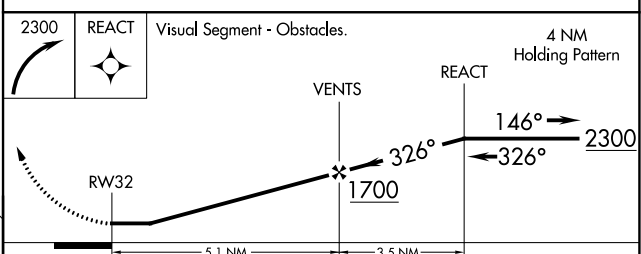
NE-2, 31 OCT 2024 to 28 NOV 2024

NE-2, 31 OCT 2024 to 28 NOV 2024



RADAR REQUIRED

MSA RW32 25 NM
2100



CATEGORY	A	B	C	D
CIRCLING	680-1 641 (700-1)	700-1 661 (700-1)	NA	