

COPTER RNAV (GPS) 185

AL-11589 (USA)

APCH CRS 185°	Rwy Idg TDZE Arprt Elev	1704 N/A 21
-------------------------	-------------------------------	--

WEIDE AHP (ABERDEEN PROVING GROUND) (KEDG)

RNP APCH - GPS	MISSED APPROACH: Climbing left turn to 2500 direct JIRET and hold.
AWOS-AV 126.2 (CTAF)	POTOMAC APP CON/DEP CON 125.525 291.625

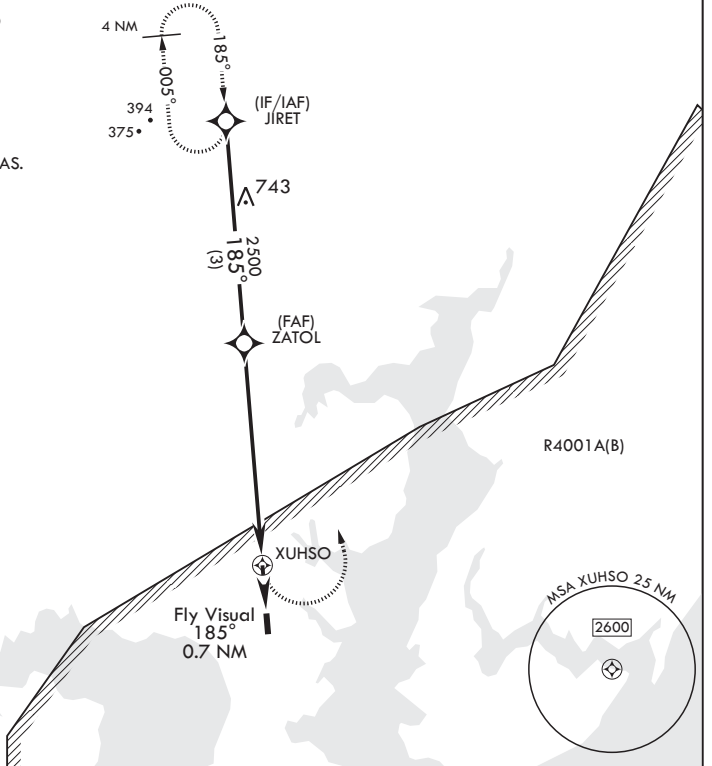
.571

Proceed VFR from XUHSO or conduct the specified missed approach.

For VFR missed approach exit restricted area to north expeditiously.

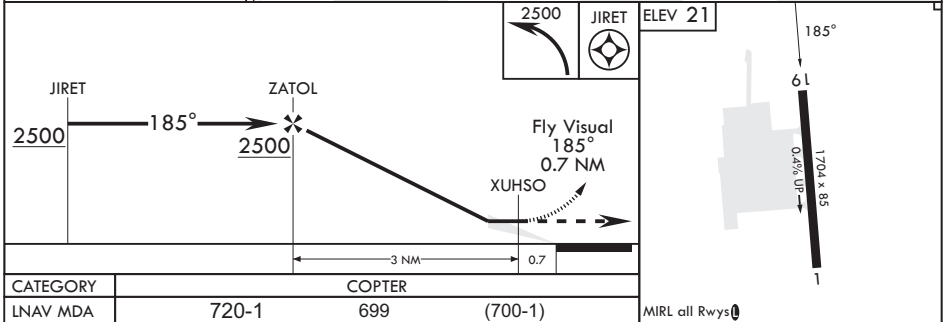
Limit all segments to 80 KIAS.

Use Phillips AAF altimeter setting.



NE-3, 31 OCT 2024 to 28 NOV 2024

NE-3, 31 OCT 2024 to 28 NOV 2024



COPTER RNAV (GPS) 185