

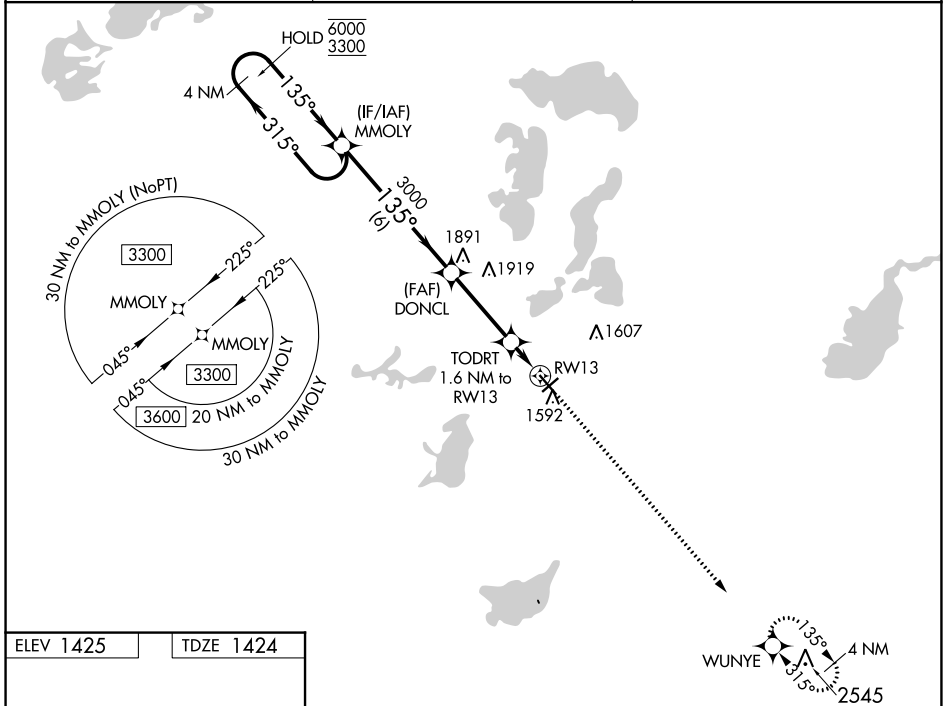
WAAS CH 50245 W13A	APP CRS 135°	Rwy Idg TDZE Apt Elev	5099 1424 1425
--	------------------------	-----------------------------	---

RNAV (GPS) RWY 13

ALEXANDRIA RGNL/CHANDLER FLD (A.XN)

RNP APCH - GPS.	MISSED APPROACH: Climb to 3600 direct WUNYE and hold.
<p>▼ For uncompensated Baro-VNAV systems, LNAV/VNAV NA below -24°C or above 54°C.</p>	

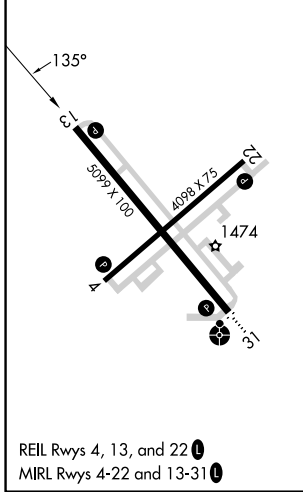
ASOS 118.375	MINNEAPOLIS CENTER 126.1 269.2	UNICOM 123.0 (CTAF) 0
------------------------	--	---------------------------------



NC-1, 28 NOV 2024 to 26 DEC 2024

NC-1, 28 NOV 2024 to 26 DEC 2024

ELEV 1425	TDZE 1424
-----------	-----------



ALEXANDRIA, MINNESOTA
Orig 05OCT23

4 NM Holding Pattern MMOLY				VGSi and RNAV glidepath not coincident (VGSi Angle 3.00/TCH 34).				3600 WUNYE
6000	3300	3000	3000	1960	1960	1960	1960	
GP 3.00°		TCH 40		TODRT 1.6 NM to RW13		RW13		
6 NM		3.3 NM		1.6 NM				
CATEGORY	A	B	C	D				
LPV DA	1674-1		250 (300-1)					
LNAV/VNAV DA	1721-1		297 (300-1)					
LNAV MDA	1800-1		376 (400-1)					
CIRCLING	1900-1	475 (500-1)	1940-1½ 515 (600-1½)	2000-2 575 (600-2)				