

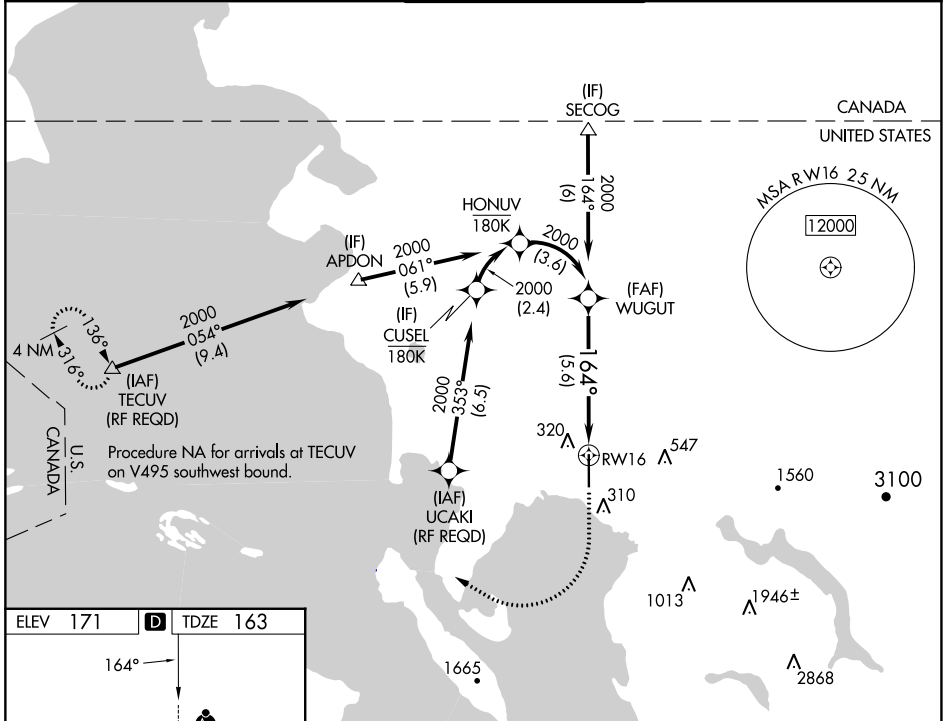
APP CRS	Rwy Idg	<b>6700</b>
<b>164°</b>	TDZE	<b>163</b>
	Apt Elev	<b>171</b>

# RNAV (RNP) Z RWY 16

BELLINGHAM INTL (BLI)

RNP AR APCH	MALSR	MISSED APPROACH: Climb to 700 then climbing right turn to 2000 direct TECUV and hold.
<p>▼ For uncompensated Baro-VNAV systems, procedure NA below -10°C or above 54°C. For inop ALS, increase RNP 0.27 all Cats visibility to RVR 4500, increase RNP 0.30 all Cats visibility to RVR 6000.</p>		

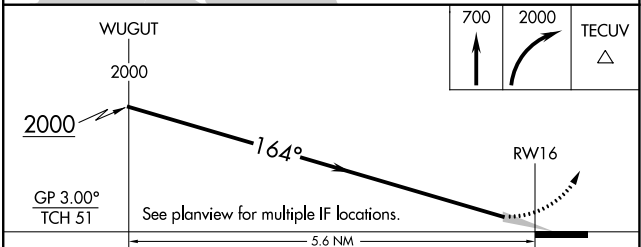
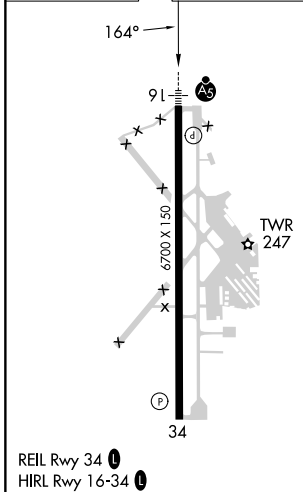
ATIS <b>134.45</b>	VICTORIA TERMINAL APP CON <b>132.7 290.8</b>	BELLINGHAM TOWER* <b>124.9 (CTAF) 0 379.3</b>	GND CON <b>127.4 379.3</b>	UNICOM <b>122.95</b>
-----------------------	---	--	-------------------------------	-------------------------



NW-1, 28 NOV 2024 to 26 DEC 2024

NW-1, 28 NOV 2024 to 26 DEC 2024

ELEV 171	<b>D</b>	TDZE 163
----------	----------	----------



CATEGORY	A	B	C	D
RNP 0.27 DA		483/24	320 (400-½)	
RNP 0.30 DA		580/45	417 (500-¾)	

## AUTHORIZATION REQUIRED