

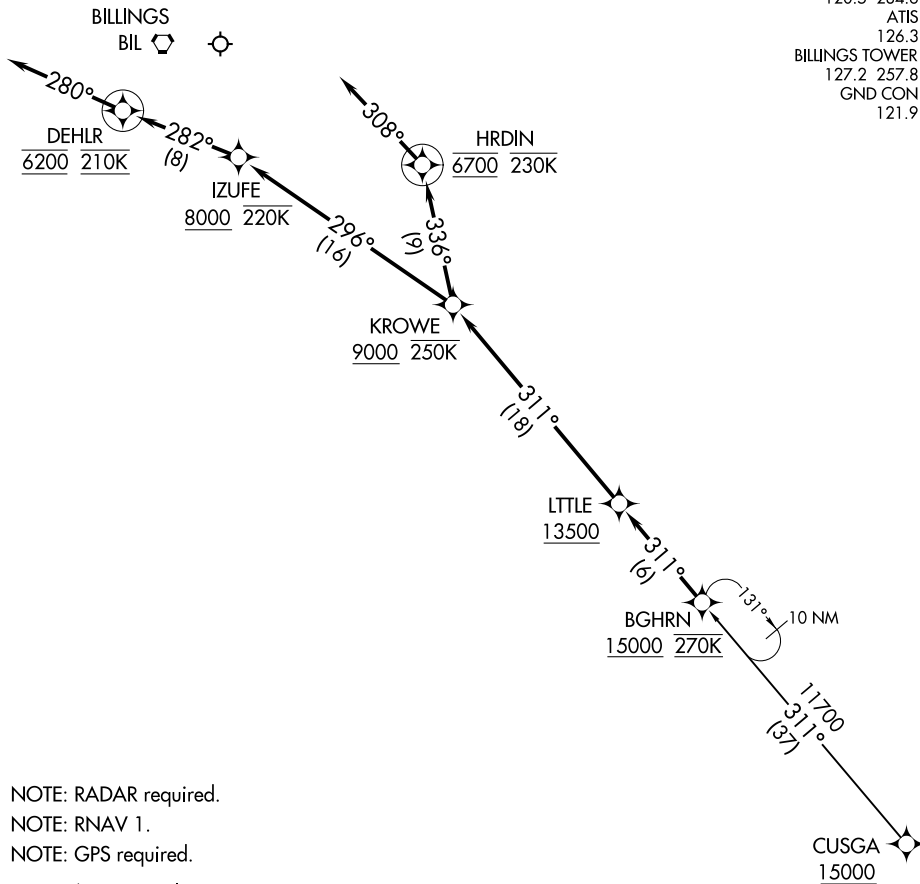
(BGHRN.BGHRN3) 18256

BGHRN THREE ARRIVAL (RNAV)

AI-48 (FAA)

BILLINGS LOGAN INTL (BIL)
BILLINGS, MONTANA

BILLINGS APP CON	120.5	284.6
ATIS	126.3	
BILLINGS TOWER	127.2	257.8
GND CON	121.9	



- NOTE: RADAR required.
- NOTE: RNAV 1.
- NOTE: GPS required.
- NOTE: Chart not to scale.

ARRIVAL ROUTE DESCRIPTION

CUSGA TRANSITION (CUSGA.BGHRN3)

From BGHRN on track 311° to cross LITTLE at or above 13500, then on track 311° to cross KROWE at or above 9000 and at or below 250K.

LANDING RUNWAY 10L: From KROWE on track 296° to cross IZUFE at or above 8000 and at or below 220K, then on track 282° to cross DEHLR at 6200 and at 210K, then on heading 280° or as assigned by ATC. Expect assigned approach or RADAR vectors to final approach course.

LANDING RUNWAY 28R: From KROWE on track 336° to cross HRDIN at 6700 and at or below 230K, then on heading 308° or as assigned by ATC. Expect assigned approach or RADAR vectors to final approach course.

BGHRN THREE ARRIVAL (RNAV)

(BGHRN.BGHRN3) 13SEP18

BILLINGS, MONTANA
BILLINGS LOGAN INTL (BIL)

NW-1, 28 NOV 2024 to 26 DEC 2024

NW-1, 28 NOV 2024 to 26 DEC 2024