

BILOXI, MISSISSIPPI

RNAV (GPS) RWY 22

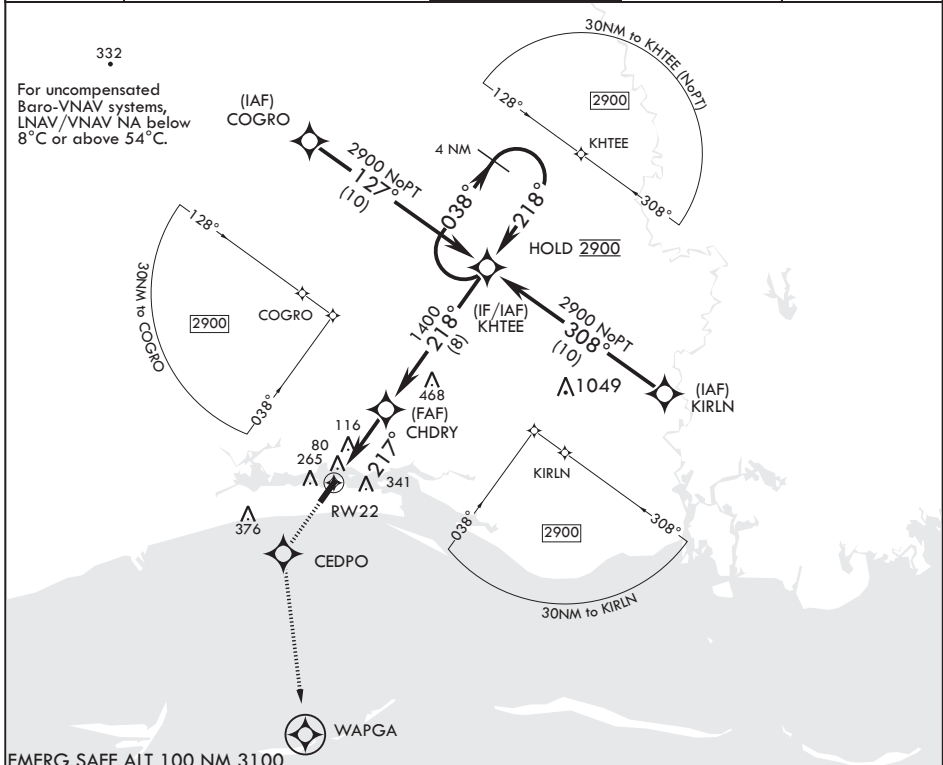
APCH CRS	Rwy Idg	6630
217°	THRE	17
	Arprt Elev	33

AL-49 (USAF)

KEESLER AFB (KBIX)

RNP APCH	ALSF-1	MISSED APPROACH: Climb to 2200 direct CEDPO and track 175° to WAPGA. Expect ATC instructions.
<p>▼ * When ALS inop, increase vis to 1 3/8 miles.</p> <p>** When ALS inop, increase CAT AB RVR to 55, vis to 1 mile; CAT CD vis to 1 3/8 miles.</p>	(A1)	

ATIS 281.55	GULFPORT APP CON/DEP CON 124.6 354.1 130° - 309° 127.5 254.25 310° - 129°	TOWER* 120.75 269.075	GND CON 121.8 275.8	CLNC DEL 121.8 275.8
-----------------------	---	---------------------------------	-------------------------------	--------------------------------



EMERG SAFE ALT 100 NM 3100

<p>2200</p> <p>↑ CEDPO tr 175° WAPGA</p>	<p>ELEV 33</p> <p>Rwy 4 Idg 6030'</p> <p>Rwy 22 Idg 6630'</p> <p>THRE 17</p>																								
<p>4.1 NM</p> <p>1.4 NM to RW22</p> <p>CHDRY</p> <p>217°</p> <p>218°</p> <p>1400</p> <p>GP 3.04° TCH 53</p>	<p>4 NM Holding Pattern</p> <p>KHTEE</p> <p>038°</p> <p>2900</p> <p>218°</p>																								
<table border="1"> <tr> <th>CATEGORY</th> <th>A</th> <th>B</th> <th>C</th> <th>D</th> </tr> <tr> <td>LNAV/VNAV DA*</td> <td>520-1¼</td> <td>503</td> <td>520-1¼</td> <td>503 (500-1¼)</td> </tr> <tr> <td>LNAV MDA**</td> <td>520/40</td> <td>503 (500-¾)</td> <td>520-1¼</td> <td>503 (500-1¼)</td> </tr> <tr> <td rowspan="2">CIRCLING</td> <td>580-1</td> <td>660-1</td> <td>680-1¼</td> <td>680-2</td> </tr> <tr> <td>547 (600-1)</td> <td>627 (700-1)</td> <td>647 (700-1¼)</td> <td>647 (700-2)</td> </tr> </table>	CATEGORY	A	B	C	D	LNAV/VNAV DA*	520-1¼	503	520-1¼	503 (500-1¼)	LNAV MDA**	520/40	503 (500-¾)	520-1¼	503 (500-1¼)	CIRCLING	580-1	660-1	680-1¼	680-2	547 (600-1)	627 (700-1)	647 (700-1¼)	647 (700-2)	<p>74</p> <p>74</p> <p>45</p> <p>98</p> <p>175</p> <p>195</p> <p>195</p> <p>195</p> <p>TWR</p> <p>HIRL all Rwys</p> <p>REIL Rwy 4</p> <p>Rwy 22 2000' non-std apch lgt system</p>
CATEGORY	A	B	C	D																					
LNAV/VNAV DA*	520-1¼	503	520-1¼	503 (500-1¼)																					
LNAV MDA**	520/40	503 (500-¾)	520-1¼	503 (500-1¼)																					
CIRCLING	580-1	660-1	680-1¼	680-2																					
	547 (600-1)	627 (700-1)	647 (700-1¼)	647 (700-2)																					

BILOXI, MISSISSIPPI

30°25'N - 88°55'W

KEESLER AFB (KBIX)

Amdt 2 21APR22

RNAV (GPS) RWY 22

SC-4, 28 NOV 2024 to 26 DEC 2024

SC-4, 28 NOV 2024 to 26 DEC 2024