

LOC/DME I-VKQ <b>110.35</b> Chan 40(Y)	APP CRS <b>183°</b>	Rwy Idg TDZE Apt Elev <b>8676</b> <b>748</b> <b>748</b>
--	------------------------	--

# ILS or LOC RWY 18L

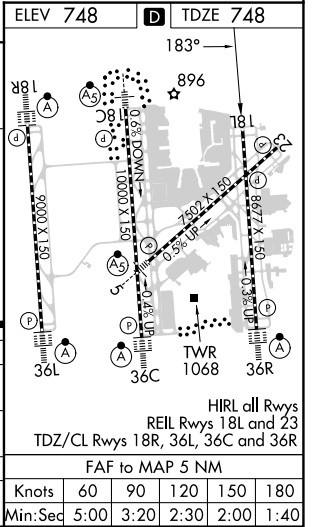
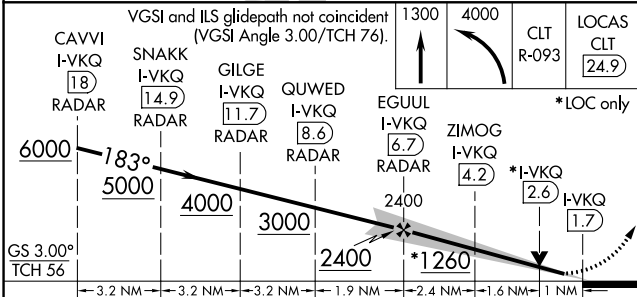
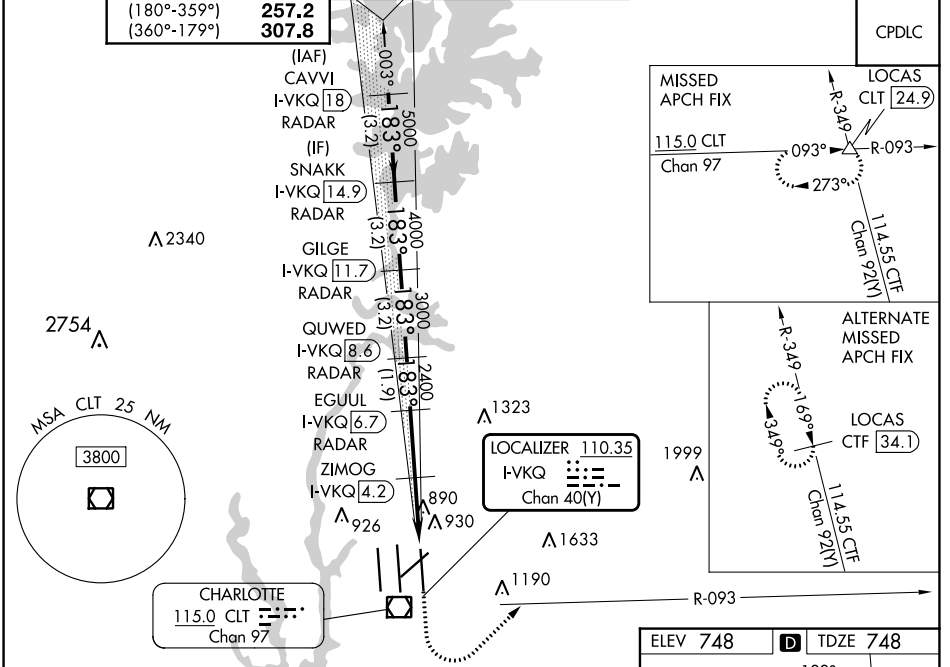
CHARLOTTE/DOUGLAS INTL (CLT)

RADAR required for procedure entry. DME or RADAR required.

Simultaneous approach authorized.  
Rwy 18L helicopter visibility reduction below RVR 4000 NA.

MISSED APPROACH: Climb to 1300 then climbing left turn to 4000 on CLT VOR/DME R-093 to LOCAS INT/CLT 24.9 DME and hold.

D-ATIS	CHARLOTTE APP CON	CHARLOTTE TOWER	GND CON	CLNC DEL
ARR <b>121.15</b> DEP <b>132.1</b>	<b>128.32</b> (001°-119°) <b>120.05</b> (120°-295°) <b>134.75</b> (296°-360°) <b>257.2</b> (180°-359°) <b>307.8</b> (360°-179°)	(Rwys 18L-36R) <b>118.1 257.8</b> (Rwy 18C-36C) <b>126.4 257.8</b> (Rwy 18R-36L) <b>133.35 257.8</b>	<b>121.8 348.6</b> (WEST) <b>121.9 348.6</b> (EAST)	<b>127.15</b> <b>348.6</b>



CATEGORY	A	B	C	D
S-ILS 18L	1002/40 254 (300-¾)			
S-LOC 18L	1260/55	512 (600-1)	1260-1⅓	512 (600-1⅓)
ZIMOG FIX MINIMUMS (DME REQUIRED)				
S-LOC 18L	1140/55	392 (400-1)	1140/60	392 (400-1¼)

SE-2, 28 NOV 2024 to 26 DEC 2024

SE-2, 28 NOV 2024 to 26 DEC 2024