

# MLLET THREE ARRIVAL (RNAV)

CHARLOTTE APP CON  
126.15 282.325  
D-ATIS ARR 121.115

RNAV 1 - DME/DME/IRU OR GPS.  
RADAR required.

## ARRIVAL ROUTE DESCRIPTION

OKNEE TRANSITION (OKNEE.MLLET3)  
TORQD TRANSITION (TORQD.MLLET3)

CLT: From RYFLE on track 308° to YELLS, then on track 308° to MLLET, then on track 306° to MANGY.

LANDING RUNWAYS 18L/C/R: From MANGY on track 306° to CEZUN, then on track 306° to DOOMY, then on track 326° to POORE, then on track 003° to LEEKS, then on track 003° to INNOR, then on track 003° to HANDO, then on track 003°. Expect RADAR vectors to final approach course.

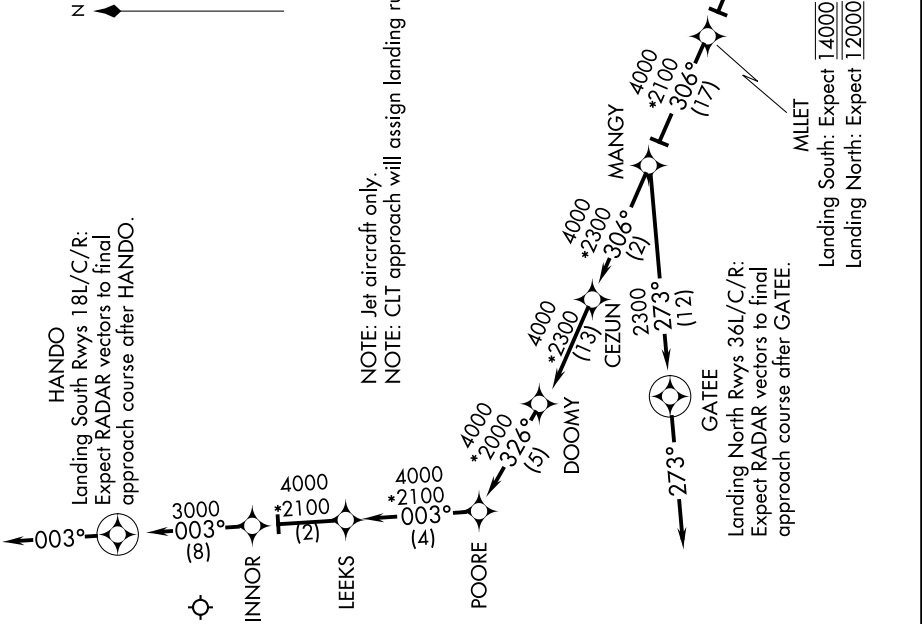
LANDING RUNWAYS 36L/C/R: From MANGY on track 273° to GATEE, then on track 273°. Expect RADAR vectors to final approach course.

**HANDO**  
Landing South Rwy 18L/C/R:  
Expect RADAR vectors to final approach course after HANDO.

NOTE: Jet aircraft only.  
NOTE: CLT approach will assign landing runway.

**Landing North Rwy 36L/C/R**:  
Expect RADAR vectors to final approach course after GATEE.

Landing South: Expect 14000 250K  
Landing North: Expect 12000 250K



NOTE: Chart not to scale.

10 NM

10 NM

10 NM

10 NM

10 NM

10 NM