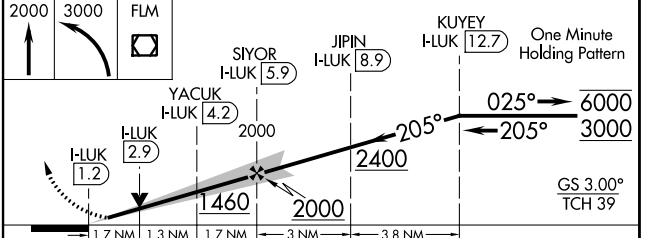
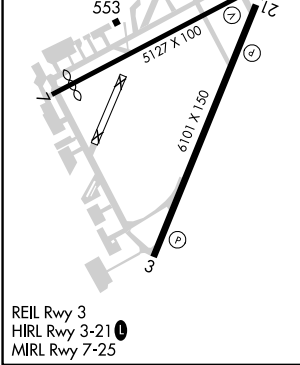
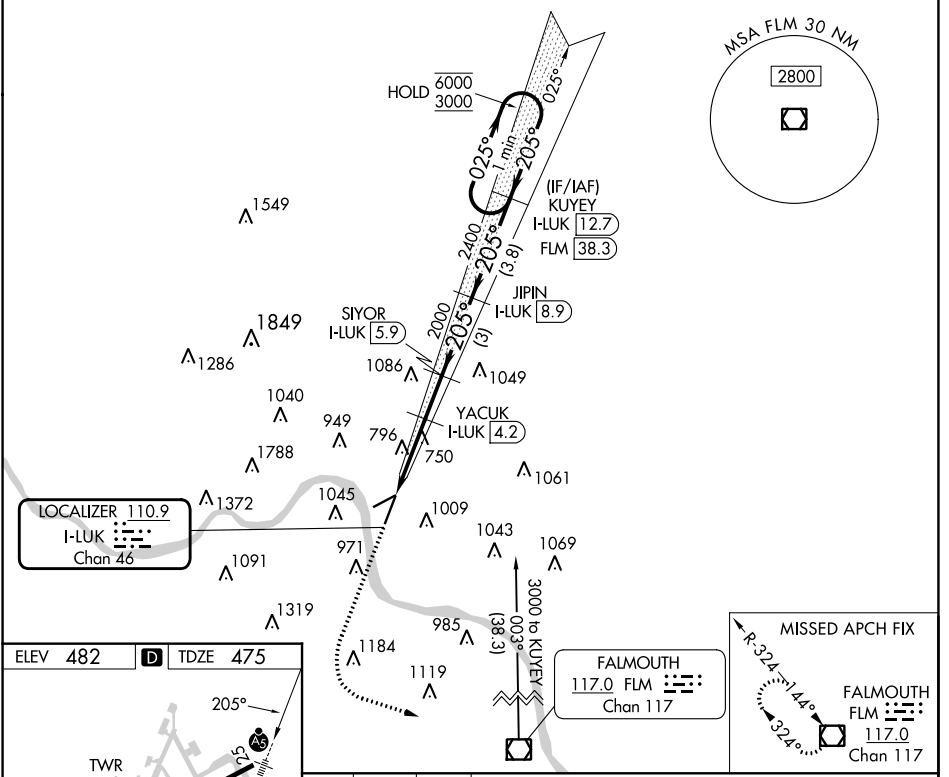


|                |             |          |             |
|----------------|-------------|----------|-------------|
| LOC/DME I-LUK  | APP CRS     | Rwy Idg  | <b>6101</b> |
| <b>110.9</b>   | <b>205°</b> | TDZE     | <b>475</b>  |
| Chan <b>46</b> |             | Apt Elev | <b>482</b>  |

**ILS or LOC RWY 21**  
CINCINNATI MUNI/LUNKEN FLD (LUK)

|   |                     |                             |              |   |                                   |               |
|---|---------------------|-----------------------------|--------------|---|-----------------------------------|---------------|
| DME required.   |                     | MALSR                       |              | MISSED APPROACH: Climb to 2000 then climbing left turn to 3000 direct FLM VOR/DME and hold. |                                   |               |
| <p>Rwy 21 helicopter visibility reduction below RVR 4000 NA. Circling Rwy 7 NA at night. Circling NA for Cat D north of Rwy 7-25. Inop table does not apply to S-ILS 21 all Cats and S-LOC 21 Cats A and B.</p> |                     |                             |              |   |                                   |               |
| ATIS  | CINCINNATI APP CON  | LUNKEN TOWER ★              | GND CON      | CLNC DEL  | CLNC DEL                          | UNICOM        |
| <b>123.6</b>  | <b>121.0 254.25</b> | <b>118.7 (CTAF) 0 257.8</b> | <b>121.9</b> | <b>121.9</b>  | <b>124.9</b><br>(When twr closed) | <b>122.95</b> |



| CATEGORY | A                  | B            | C            | D            |
|----------|--------------------|--------------|--------------|--------------|
| S-ILS 21 | 797/50 322 (400-1) |              |              |              |
| S-LOC 21 | 1060/50            | 585 (600-1)  | 1060-1¼      | 585 (600-1¼) |
| CIRCLING | 1260-1             | 1360-1¼      | 1360-2½      | 1400-3       |
|          | 778 (800-1)        | 878 (900-1¼) | 878 (900-2½) | 918 (1000-3) |

EC-2, 28 NOV 2024 to 26 DEC 2024

EC-2, 28 NOV 2024 to 26 DEC 2024