

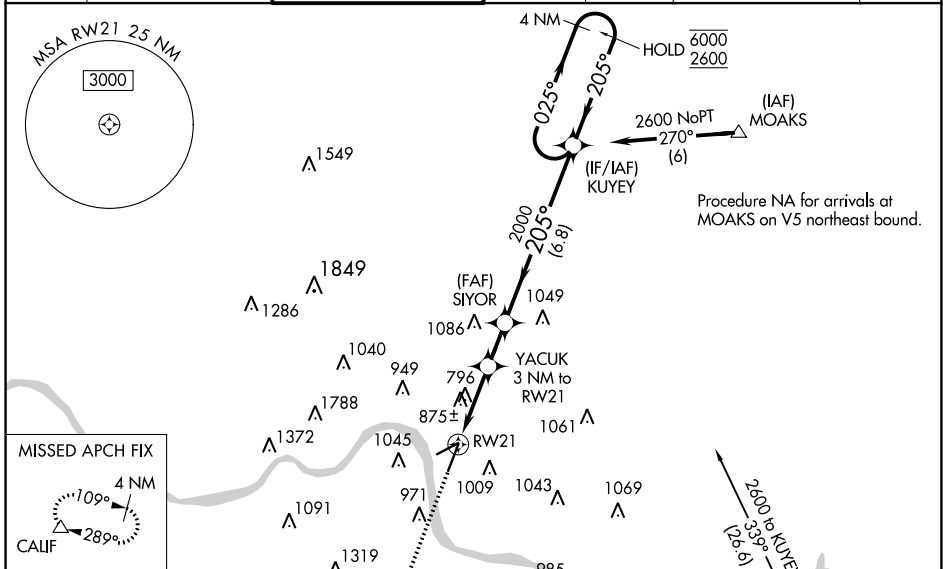
WAAS CH <b>90148</b> <b>W21A</b>	APP CRS <b>205°</b>	Rwy Idg TDZE <b>475</b> Apt Elev <b>482</b>
--	------------------------	---

# RNAV (GPS) RWY 21

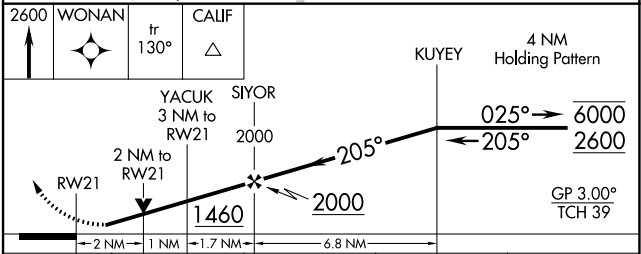
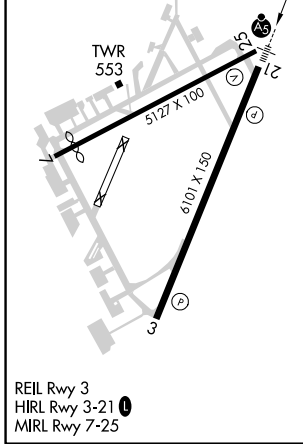
CINCINNATI MUNI/LUNKEN FLD (LUK)

RNP APCH-GPS.		MALSRS	MISSED APPROACH: Climb to 2600 direct WONAN and on track 130° to CALIF and hold.
<p>▼ Circling NA for Cat D north of Rwy 7-25. Circling Rwy 7 NA at night. For uncompensated Baro-VNAV systems, LNAV/VNAV NA below -15°C or above 54°C. Rwy 21 helicopter visibility reduction below RVR 4000 NA. Inop table does not apply to LPV all Cats and LNAV Cat A and B visibility. For inop ALS, increase LNAV/VNAV all Cats and LNAV Cat C and D visibility to 1/8 SM.</p>			

ATIS <b>123.6</b>	CINCINNATI APP CON <b>121.0 254.25</b>	LUNKEN TOWER ★ <b>118.7 (CTAF) 257.8</b>	GND CON <b>121.9</b>	CLNC DEL <b>121.9</b>	CLNC DEL <b>124.9</b> (When twr closed)	UNICOM <b>122.95</b>
----------------------	---	---	-------------------------	--------------------------	---	-------------------------



ELEV 482	<b>D</b>	TDZE 475
----------	----------	----------



CATEGORY	A	B	C	D
LPV DA		797/50	322 (400-1)	
LNAV/VNAV DA		1140-1½	665 (700-1½)	
LNAV MDA	1140/50	665 (700-1)	1140-1½	665 (700-1½)
CIRCLING	1260-1 778 (800-1)	1360-1¼ 878 (900-1¼)	1360-2½ 878 (900-2½)	1400-3 918 (1000-3)

EC-2, 28 NOV 2024 to 26 DEC 2024

EC-2, 28 NOV 2024 to 26 DEC 2024