

RNAV (GPS) RWY 36

APCH CRS	Rwy Idg	5002
357°	TDZE	18
	Arpt Elev	18

[USN]

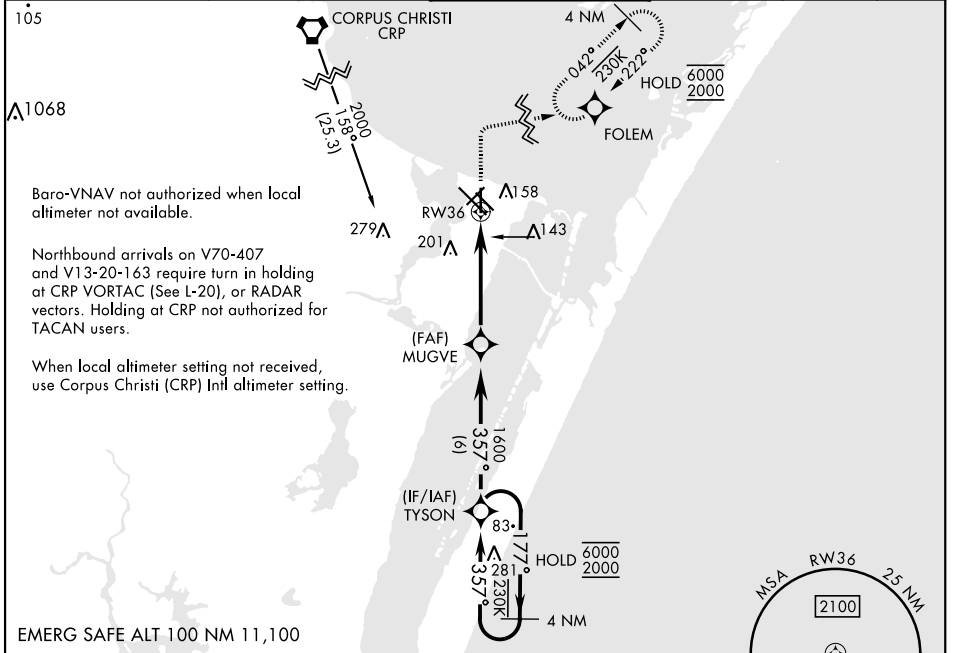
CORPUS CHRISTI NAS (TRUAX FLD) (KNGP)

RNP APCH

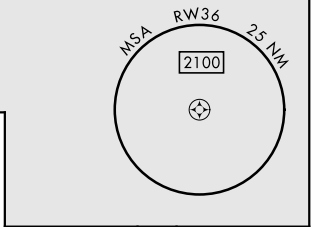
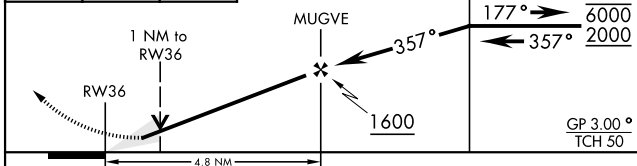
MISSED APPROACH: Climb to 600, then climbing right turn to 2000 direct FOLEM and hold.

For uncompensated Baro-VNAV systems, LNAV/VNAV NA below -15°C (5°F) or above 54°C (129°F).

ATIS ★ 127.9 290.9	APP CON 128.675 343.75	NAVY CORPUS TOWER ★ 134.85 340.2	GND CON 118.7 257.85	CLNC DEL 314.3	ASR/ PAR
------------------------------	----------------------------------	--	--------------------------------	--------------------------	----------

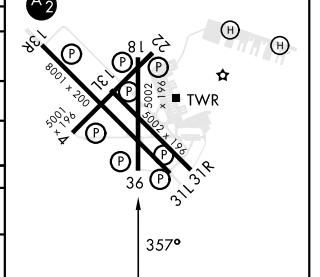


600	2000	FOLEM	VDP not authorized when using Corpus Christi (CRP) Intl altimeter setting.	4 NM Holding Pattern
-----	------	-------	--	----------------------



ELEV	18	TDZE	18
HIRL Rwy 4-22, 13R-31L			
HIRL Rwy 13L-31R, 18-36			
REL Rwy 4-22, 13L-31R, 18-36, 31L			

CATEGORY	A	B	C	D
LNAV MDA	400-1	382 (400-1)	400-1½	382 (400-1½)
LNAV/VNAV DA	400-1½		382 (400-1½)	
CIRCLING	460-1 442 (500-1)	480-1 462 (500-1)	520-1½ 502 (600-1½)	580-2 562 (600-2)
CORPUS CHRISTI (CRP) INTL ALTIMETER SETTING				
LNAV MDA	440-1	422 (500-1)	440-1¼	422 (500-1¼)
CIRCLING	500-1	482 (500-1)	540-1½ 522 (600-1½)	620-2 602 (700-2)



RNAV (GPS) RWY 36

SC-3, 28 NOV 2024 to 26 DEC 2024

SC-3, 28 NOV 2024 to 26 DEC 2024