

TACAN Z RWY 13R

TACAN NGP Chan 87	APCH CRS 147°	Rwy ldg TDZE 8001 13 Arprt Elev 18
--------------------------	----------------------	--

[USN]

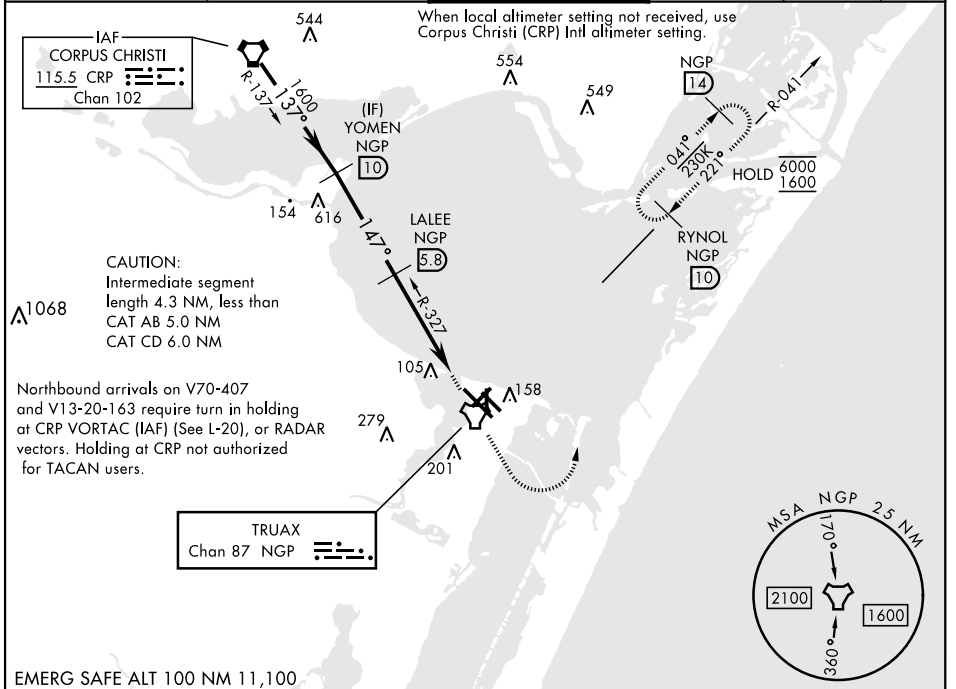
CORPUS CHRISTI NAS (TRUAX FLD) (KNGP)

▽ * When ALS inop, increase CAT AB vis to 1 mile, CAT CD vis to 1 1/2 miles.



MISSED APPROACH: Climb to 1600 direct NGP TACAN and turn left to intercept R-041 to RYNOL and hold.

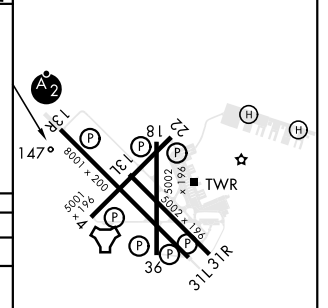
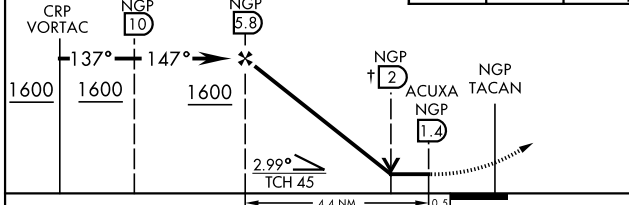
ATIS ★ 127.9 290.9	APP CON 128.675 343.75	NAVY CORPUS TOWER ★ 134.85 340.2	GND CON 118.7 257.85	CLNC DEL 314.3	ASR/PAR
------------------------------	----------------------------------	--	--------------------------------	--------------------------	---------



EMERG SAFE ALT 100 NM 11,100

↑ VDP not authorized when using Corpus Christi (CRP) Intl altimeter	1600	NGP	NGP R-041
---	------	-----	-----------

ELEV 18	TDZE 13
---------	---------



CATEGORY	A	B	C	D
S-13R *	400-3/4	387 (400-3/4)	400-7/8	387 (400-7/8)
CIRCLING	460-1 442 (500-1)	480-1 462 (500-1)	520-1 1/2 502 (600-1 1/2)	580-2 562 (600-2)
CORPUS CHRISTI (CRP) INTL ALTIMETER SETTING				
S-13R *	420-3/4	407 (500-3/4)	420-1	407 (500-1)
CIRCLING	500-1	482 (500-1)	540-1 1/2 522 (600-1 1/2)	620-2 602 (700-2)

HIRL Rwy 4-22, 13R-31L
HIRL Rwy 13L-31R, 18-36
REIL Rwy 4-22, 13L-31R, 18-36, 31L

TACAN Z RWY 13R

SC-3, 28 NOV 2024 to 26 DEC 2024

SC-3, 28 NOV 2024 to 26 DEC 2024