

VOR/DME or TACAN Y RWY 13R

[USN]

CORPUS CHRISTI NAS (TRUAX FLD) (KNGP)

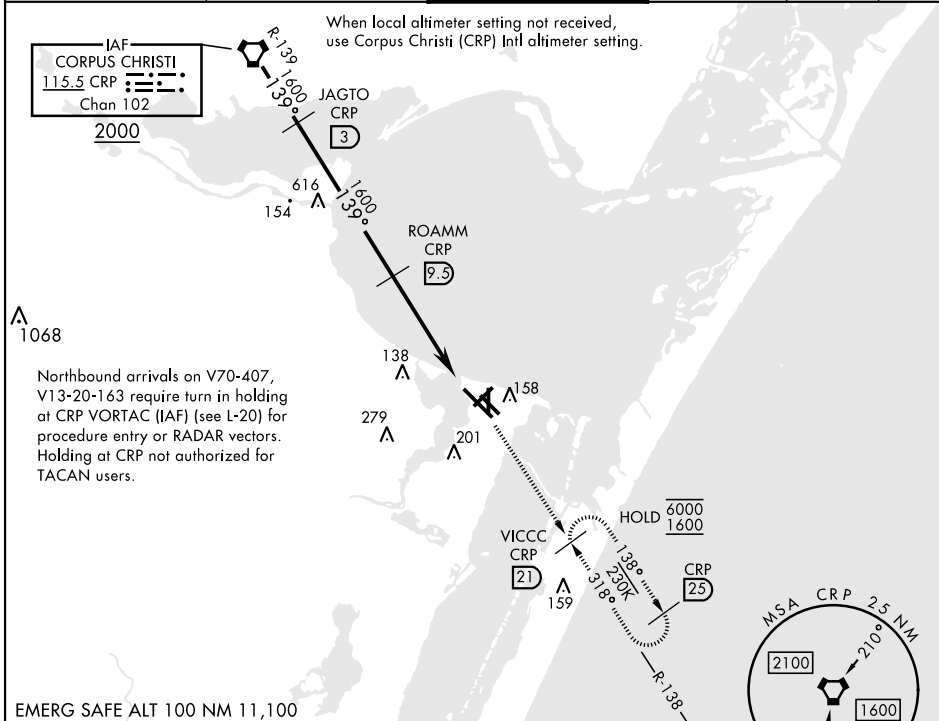
VORTAC CRP 115.5 Chan 102	APCH CRS 139°	Rwy Idg 8001 TDZE 13 Arprt Elev 18
---	-------------------------	---

▲ * When ALS inop, increase CAT AB vis to 1 mile, CAT CD vis to 1½ miles.
** When ALS inop, increase CAT AB vis to 1 mile, CAT CD vis to 1½ miles.

SALSF
A2

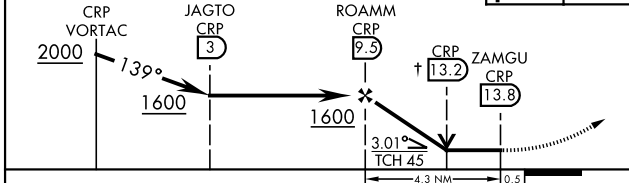
MISSED APPROACH: Climb to 1600 on CRP VORTAC R-138 to VICCC and hold.

ATIS * 127.9 290.9	APP CON 128.675 343.75	NAVY CORPUS TOWER * 134.85 340.2	GND CON 118.7 257.85	CLNC DEL 314.3	ASR/ PAR
------------------------------	----------------------------------	--	--------------------------------	--------------------------	-------------



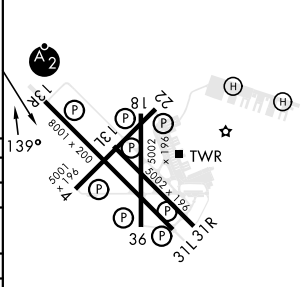
Northbound arrivals on V70-407, V13-20-163 require turn in holding at CRP VORTAC (IAF) (see L-20) for procedure entry or RADAR vectors. Holding at CRP not authorized for TACAN users.

† VDP not authorized when using Corpus Christi (CRP) Intl altimeter setting.



CATEGORY	A		B		C		D	
S-13R *	420-¾	407	[500-¾]		420-1	407	[500-1]	
☐ CIRCLING	460-1	480-1	480-1		520-1½	580-2	580-2	
	442 (500-1)	462 (500-1)	502 (600-1½)		562 (600-2)			
CORPUS CHRISTI (CRP) INTL ALTIMETER SETTING								
S-13R **	460-¾	447	[500-1¾]		460-1	447	[500-1]	
☐ CIRCLING	500-1	482 (500-1)	522 (600-1½)		620-2	602	[700-2]	

ELEV	18	TDZE	13
------	----	------	----



VOR/DME or TACAN Y RWY 13R

SC-3, 28 NOV 2024 to 26 DEC 2024

SC-3, 28 NOV 2024 to 26 DEC 2024