

WAAS CH <b>82529</b> W03A	APP CRS <b>026°</b>	Rwy Idg TDZE Apt Elev	<b>5465</b> <b>1503</b> <b>1503</b>
---------------------------------	------------------------	-----------------------------	---

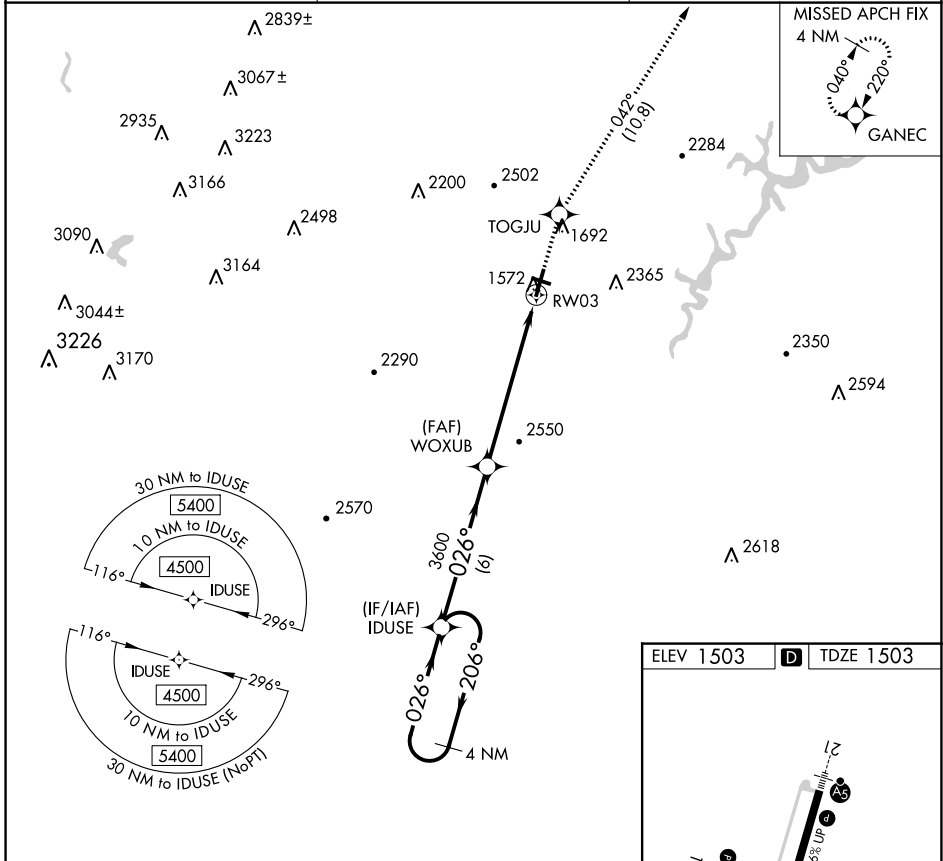
# RNAV (GPS) Z RWY 3

ALTOONA/BLAIR COUNTY (A00)

**⚠** Rwy 3 helicopter visibility reduction below 3/4 SM NA. DME/DME RNP-0.3 NA. When local altimeter setting not received, use Bedford County altimeter setting and increase all DA 84 feet, and increase all visibilities 3/8 mile.

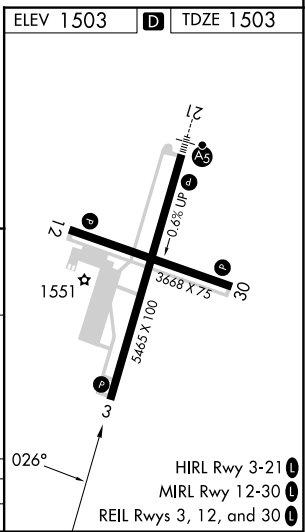
**MISSED APPROACH:** Climb to 5000 direct TOGJU and on track 042° to GANEC and hold, continue climb-in-hold to 5000.

ASOS <b>127.125</b>	JOHNSTOWN APP CON ★ <b>121.2 299.2</b>	CTAF <b>123.60</b>
------------------------	---	-----------------------



NE-4, 28 NOV 2024 to 26 DEC 2024

NE-4, 28 NOV 2024 to 26 DEC 2024



4 NM Holding Pattern IDUSE		5000 TOGJU		GANEC	
4500 ← 206°		↑		tr 042°	
GP 3.00° TCH 55		WOXUB 3600		RWY 3	
6 NM		6.4 NM			
CATEGORY	A	B	C	D	
LPV DA		1828-1	325 (400-1)		

- HIRL Rwy 3-21
- MIRL Rwy 12-30
- REIL Rws 3, 12, and 30