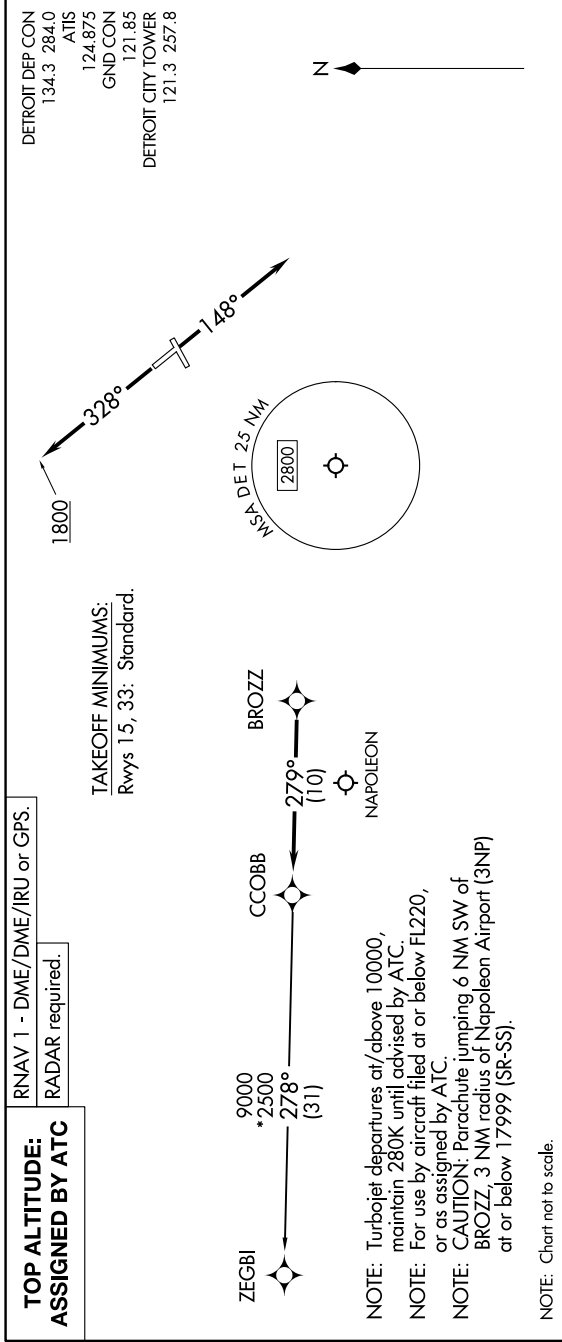


EC-1, 28 NOV 2024 to 26 DEC 2024



DEPARTURE ROUTE DESCRIPTION

**TAKEOFF RUNWAY 15:** Climb on heading 148° or as assigned by ATC, thence...  
**TAKEOFF RUNWAY 33:** Climb on heading 328° to 1800 then as assigned by ATC, thence....  
 ....for RADAR vectors to BROZZ, then on track 279° to CCOBB, then on (transition).  
 Maintain ATC assigned altitude, expect filed altitude 10 minutes after departure.

ZEGBI TRANSITION (CCOBB3.ZEGBI):

EC-1, 28 NOV 2024 to 26 DEC 2024