

APP CRS	Rwy Idg	4347
032°	TDZE	1972
	Apt Elev	1987

RNAV (GPS) RWY 5

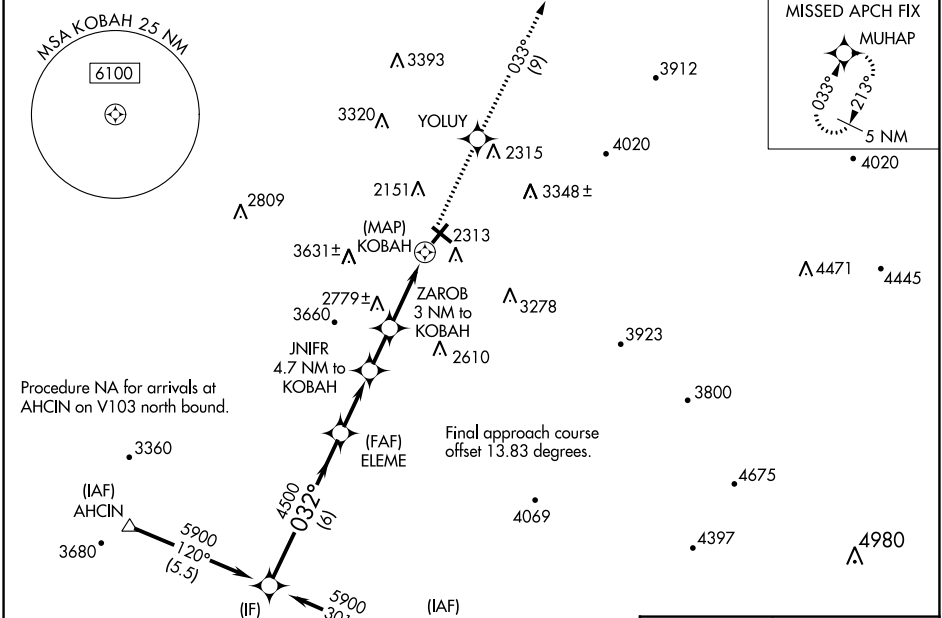
ELKINS/RANDOLPH COUNTY (JENNINGS RANDOLPH FLD) (EKN)

RNP APCH.

⚠ Circling Rwy 14, 23, 32 NA at night. When local altimeter setting not received, use Buckhannon altimeter setting and increase all MDA 100 feet.
⚠ Straight-in minimums NA when using Buckhannon altimeter setting.
⚠ Rwy 5 helicopter visibility reduction below 3/4 SM NA.

MISSED APPROACH: Climb to 5500 direct YOLUY and on track 033° to MUHAP and hold.

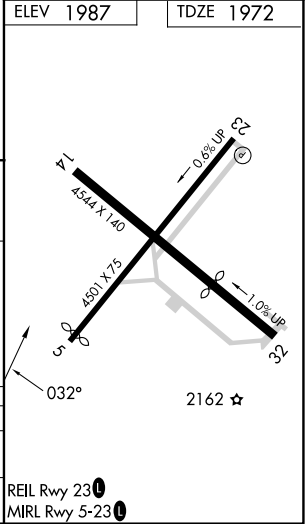
ASOS 119.275	CLARKSBURG APP CON ★ 121.15 284.65	CTAF 123.6	122.9 0
------------------------	--	----------------------	----------------



NE-4, 28 NOV 2024 to 26 DEC 2024

NE-4, 28 NOV 2024 to 26 DEC 2024

ELEV 1987	TDZE 1972
-----------	-----------



* 3800 when using Buckhannon altimeter setting. **3460 when using Buckhannon altimeter setting.	5500	YOLUY	tr	MUHAP
DOFAD	ELEM	JNIFR 4.7 NM to KOBAH	ZAROB 3 NM to KOBAH	KOBAH
5900	4500	*3700	**3360	3.62° TCH 50
6 NM	2.5 NM	1.7 NM	3 NM	0.5 NM

CATEGORY	A	B	C	D
LNVA MDA	3040-1½ 1068 (1100-1½)	3040-1½ 1068 (1100-1½)	3040-3 1068 (1100-3)	NA
C CIRCLING	3040-1½ 1053 (1100-1½)	3140-1½ 1153 (1200-1½)	3720-3 1733 (1800-3)	4020-3 2033 (2100-3)

REIL Rwy 23 **0**
 MIRL Rwy 5-23 **0**

RNAV (GPS) RWY 5