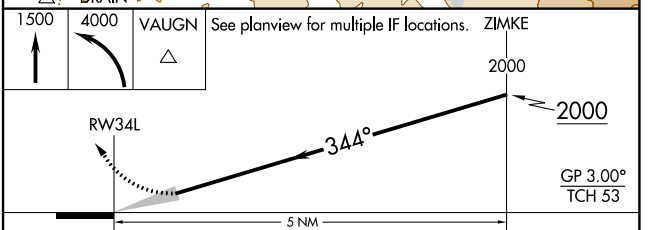
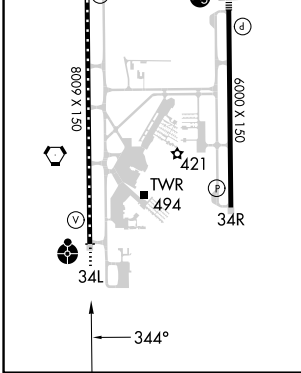
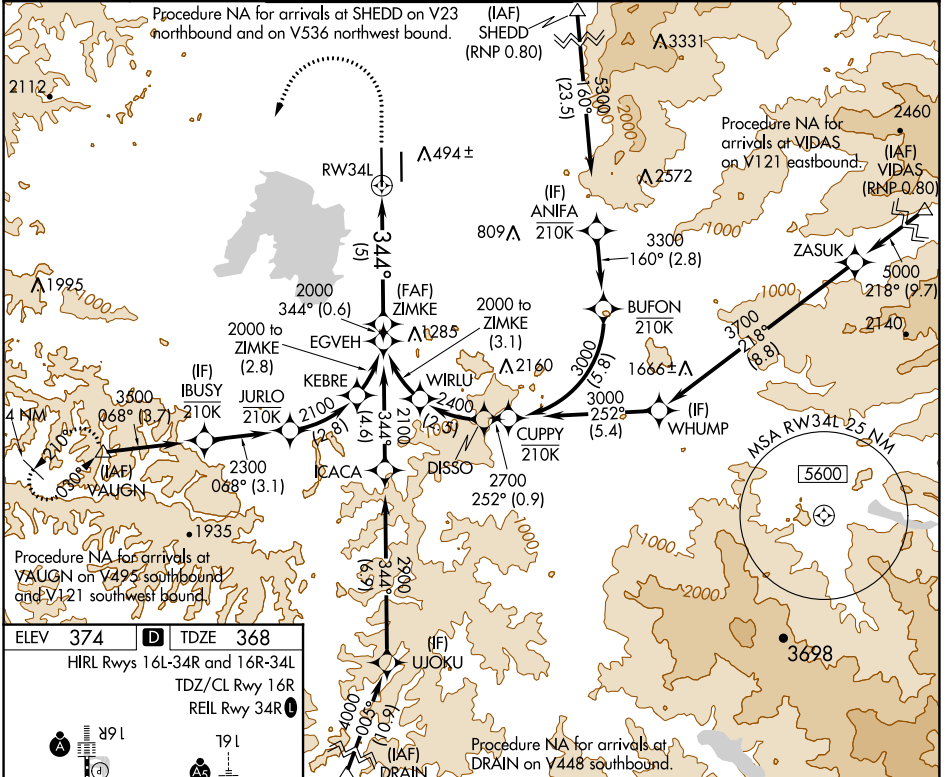


APP CRS	Rwy Idg	<b>8009</b>
<b>344°</b>	TDZE	<b>368</b>
	Apt Elev	<b>374</b>

# RNAV (RNP) Z RWY 34L

MAHLON SWEET FLD (EUG)

RNP AR APCH - GPS.		ODALS	MISSED APPROACH: Climb to 1500, then climbing left turn to 4000 direct VAUGN and hold.		
<p>Simultaneous approach authorized. For uncompensated Baro-VNAV systems, procedure NA below -6°C or above 54°C. For inop ALS, increase RNP 0.20 all Cats visibility to RVR 5500; increase RNP 0.30 Cats A, B visibility to RVR 6000.</p>					
ATIS	CASCADE APP CON★	EUGENE TOWER★	GND CON	CLNC DEL	UNICOM
<b>125.225</b>	<b>119.6 348.7</b>	<b>118.9 (CTAF) 0 371.9 (Rwy 16R/34L)</b> <b>124.15 371.9 (Rwy 16L/34R)</b>	<b>121.7 269.5</b>	<b>121.7 269.5</b>	<b>122.95</b>



CATEGORY	A	B	C	D
RNP 0.20 DA		720/45	352 (400-7%)	
RNP 0.30 DA		761/50	393 (400-1)	

**AUTHORIZATION REQUIRED**

NW-1, 28 NOV 2024 to 26 DEC 2024

NW-1, 28 NOV 2024 to 26 DEC 2024