

# RNAV (GPS) RWY 33

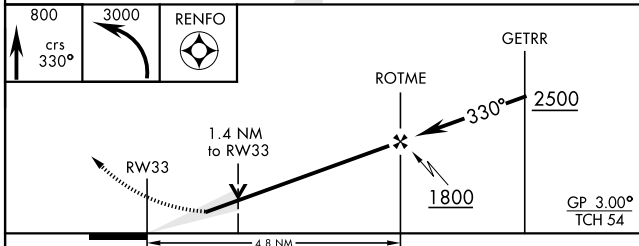
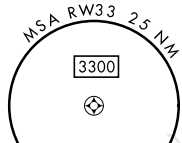
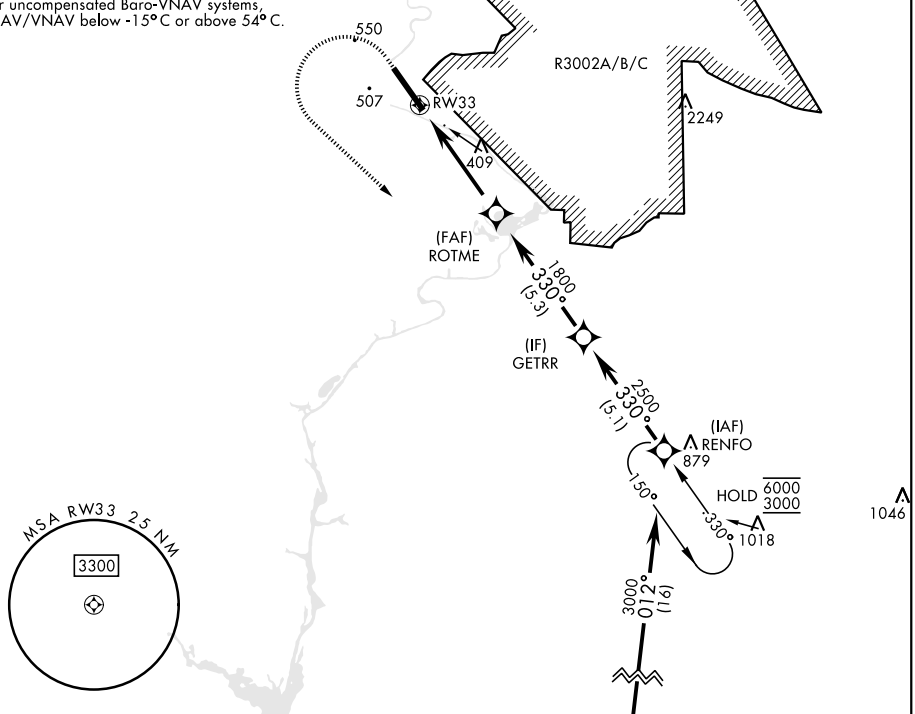
WAAS CH <b>67545</b> <b>W33A</b>	APCH CRS <b>330°</b>	Rwy ldg <b>9302</b> TDZE <b>226</b> Arpt Elev <b>227</b>	[USA]	LAWSON AAF (KLSF)
--	-------------------------	--	-------	-------------------

RNP APCH-GPS	SALSF <b>(A2)</b>	MISSED APPROACH: Climb to 800 then climbing left turn to 3000 direct RENFO and hold.
--------------	----------------------	--

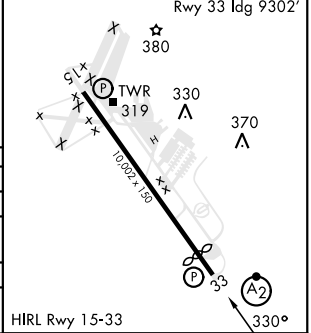
\* When ALS inop, increase vis to 1 3/8 mile.  
 \*\* When ALS inop, increase CAT AB RVR to 55, vis to 1 mile; CAT CD vis to 1 3/8 miles.  
 \*\*\* Circling not authorized NE of Rwy 15-33. Not authorized when tower closed.

ATIS ★ <b>134.375</b>	ATLANTA APP CON <b>125.5 323.1</b>	TOWER <b>119.05 (CTAF) 269.525</b>	GND CON <b>121.7 254.25</b>	CLNC DEL <b>121.7 251.15</b>
--------------------------	---------------------------------------	---------------------------------------	--------------------------------	---------------------------------

For uncompensated Baro-VNAV systems, LNAV/VNAV below -15°C or above 54°C.



ELEV	227	TDZE	226
------	-----	------	-----



CATEGORY	A		B		C		D	
LPV DA	427/40		200		(200-3/4)			
LNAV/VNAV DA*	701/60		474		(500-1 1/2)			
LNAV MDA**	740/40	513 (600-3/4)	740-1 1/4	513 (600-1 1/4)				
*** CIRCLING	820-1	860-1	960-2	1080-2 3/4				
	593 (600-1)	633 (700-1)	733 (800-2)	853 (900-2 1/4)				

# RNAV (GPS) RWY 33

SE-4, 28 NOV 2024 to 26 DEC 2024

SE-4, 28 NOV 2024 to 26 DEC 2024