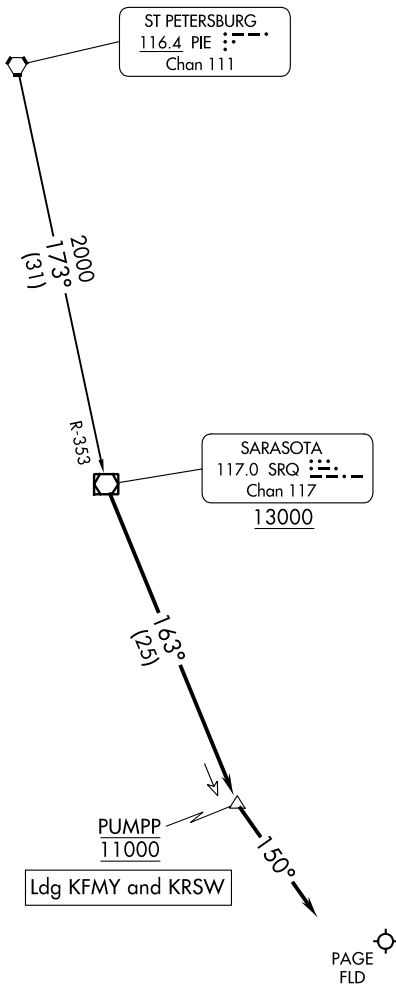


PUMPP ONE ARRIVAL

FORT MYERS, FLORIDA

FORT MYERS APP CON ★
 134.425 306.2
 FMY ATIS
 123.725
 RSW D-ATIS
 124.65

RADAR required.
 DME required.



SE-3, 28 NOV 2024 to 26 DEC 2024

SE-3, 28 NOV 2024 to 26 DEC 2024

NOTE: Chart not to scale.

ARRIVAL ROUTE DESCRIPTION

ST PETERSBURG TRANSITION (PIE.PUMPP1): From over PIE VORTAC on PIE R-173 and SRQ R-353 to SRQ VOR/DME, thence. . .

. . .from over SRQ VOR/DME on SRQ R-163 to cross PUMPP at 11000, then on heading 150°. Expect RADAR vectors to final approach course.

PUMPP ONE ARRIVAL

FORT MYERS, FLORIDA