

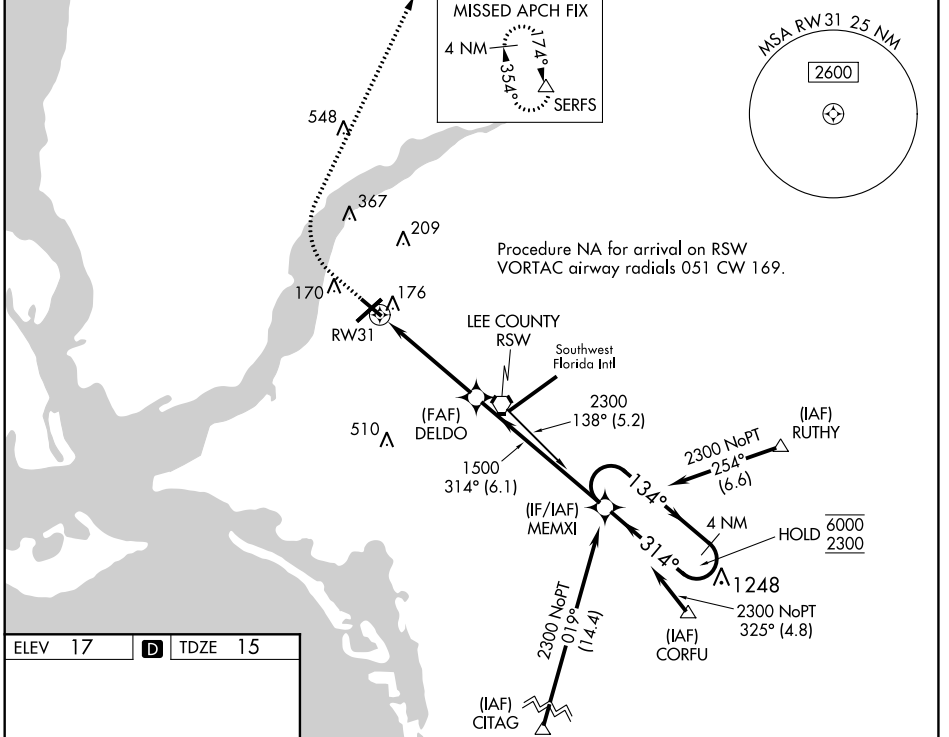
WAAS CH 50524 W31A	APP CRS 314°	Rwy Idg 4705 TDZE 15 Apt Elev 17
--	------------------------	---

RNAV (GPS) RWY 31

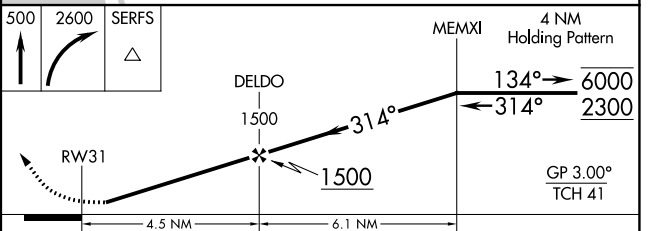
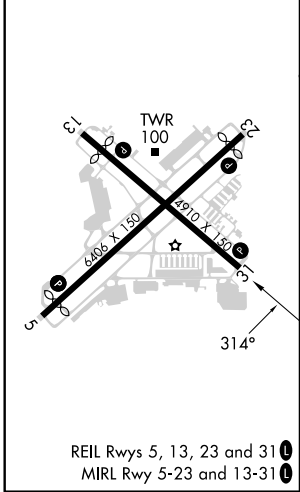
PAGE FLD (FMY)

RNP APCH.
 ▼ Rwy 31 helicopter visibility reduction below 1 SM NA. For uncompensated Baro-VNAV systems, LNAV/VNAV NA below 4°C or above 54°C. Straight-in Rwy 31 at night, Circling Rwy 31 at night, operational VGSI required, remain on or above VGSI glidepath until threshold.
 MISSED APPROACH: Climb to 500 then climbing right turn to 2600 direct SERFS and hold.

ATIS 123.725	FORT MYERS APP CON ★ 125.15 306.2 (Rwys 5, 13) 126.8 306.2 (Rwys 23, 31)	PAGE TOWER ★ 119.0 (CTAF) 306.95	GND CON 121.7	CLNC DEL 121.7
------------------------	--	---	-------------------------	--------------------------



ELEV 17	D	TDZE 15
---------	---	---------



CATEGORY	A	B	C	D
LPV DA		265-1	250 (300-1)	
LNAV/VNAV DA		377-1	362 (400-1)	
LNAV MDA	480-1	465 (500-1)	480-1 ³ / ₈	465 (500-1 ³ / ₈)
CIRCLING	540-1	523 (600-1)	600-1 ¹ / ₂ 583 (600-1 ¹ / ₂)	680-2 663 (700-2)

SE-3, 28 NOV 2024 to 26 DEC 2024

SE-3, 28 NOV 2024 to 26 DEC 2024