

WAAS CH <b>42612</b> <b>W16A</b>	APP CRS <b>164°</b>	Rwy ldg <b>7502</b> TDZE <b>710</b> Apt Elev <b>710</b>
--	------------------------	---

# RNAV (GPS) RWY 16

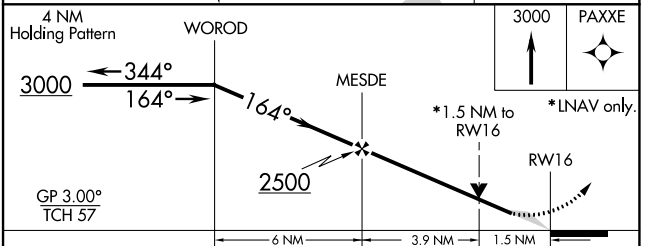
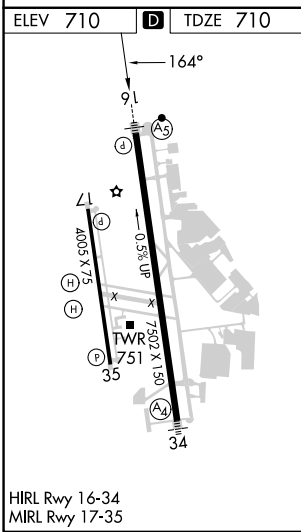
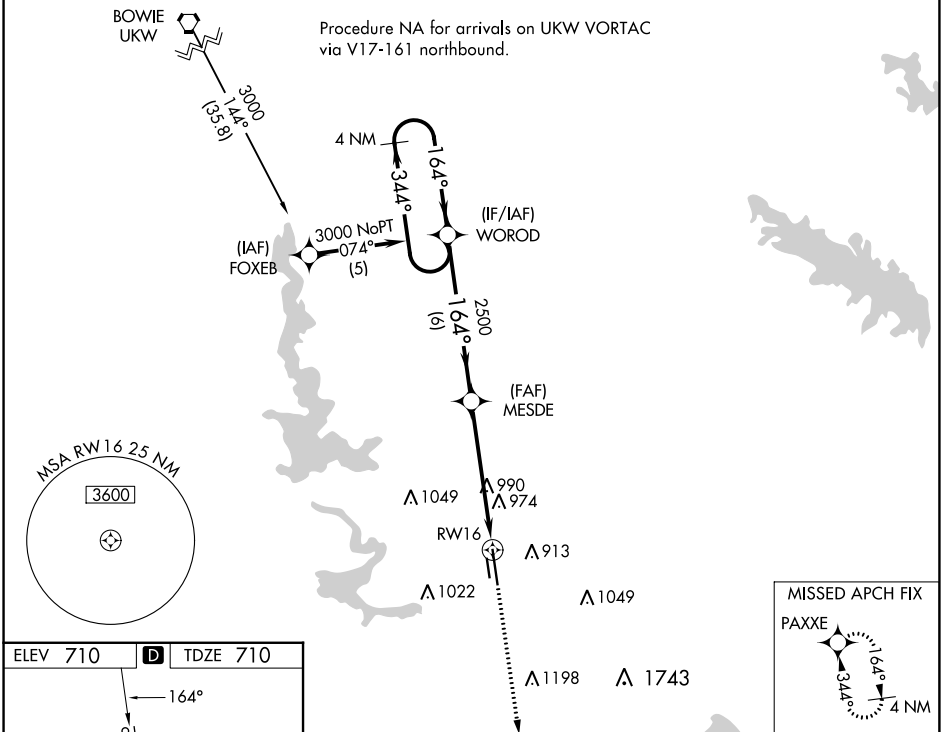
FORT WORTH MEACHAM INTL (FTW)

**⚠** For uncompensated Baro-VNAV systems, LNAV/VNAV NA below -16°C (4°F) or above 47°C (116°F). DME/DME RNP-0.3 NA.  
**⚠** \*\* RVR 1800 authorized with use of FD or AP or HUD to DA.



MISSED APPROACH: Climb to 3000 direct PAXXE and hold.

ATIS <b>120.7</b>	LONE STAR APP CON (North) <b>118.1 306.95</b> (South) <b>135.975 379.9</b>	MEACHAM TOWER <b>118.3 257.8</b>	GND CON <b>121.9</b>	CLNC DEL <b>124.65</b>
----------------------	--	-------------------------------------	-------------------------	---------------------------



CATEGORY	A	B	C	D
LPV DA **		910/24	200 (200-½)	
LNAV/VNAV DA		1284-1½	574 (600-1½)	
LNAV MDA	1240/24	530 (600-½)	1240/50 530 (600-1)	1240/60 530 (600-1¼)
CIRCLING	1260-1 550 (600-1)	1280-1 570 (600-1)	1340-1¾ 630 (700-1¾)	1500-2½ 790 (800-2½)

SC-2, 28 NOV 2024 to 26 DEC 2024

SC-2, 28 NOV 2024 to 26 DEC 2024