

# SWABR ONE DEPARTURE (RNAV)

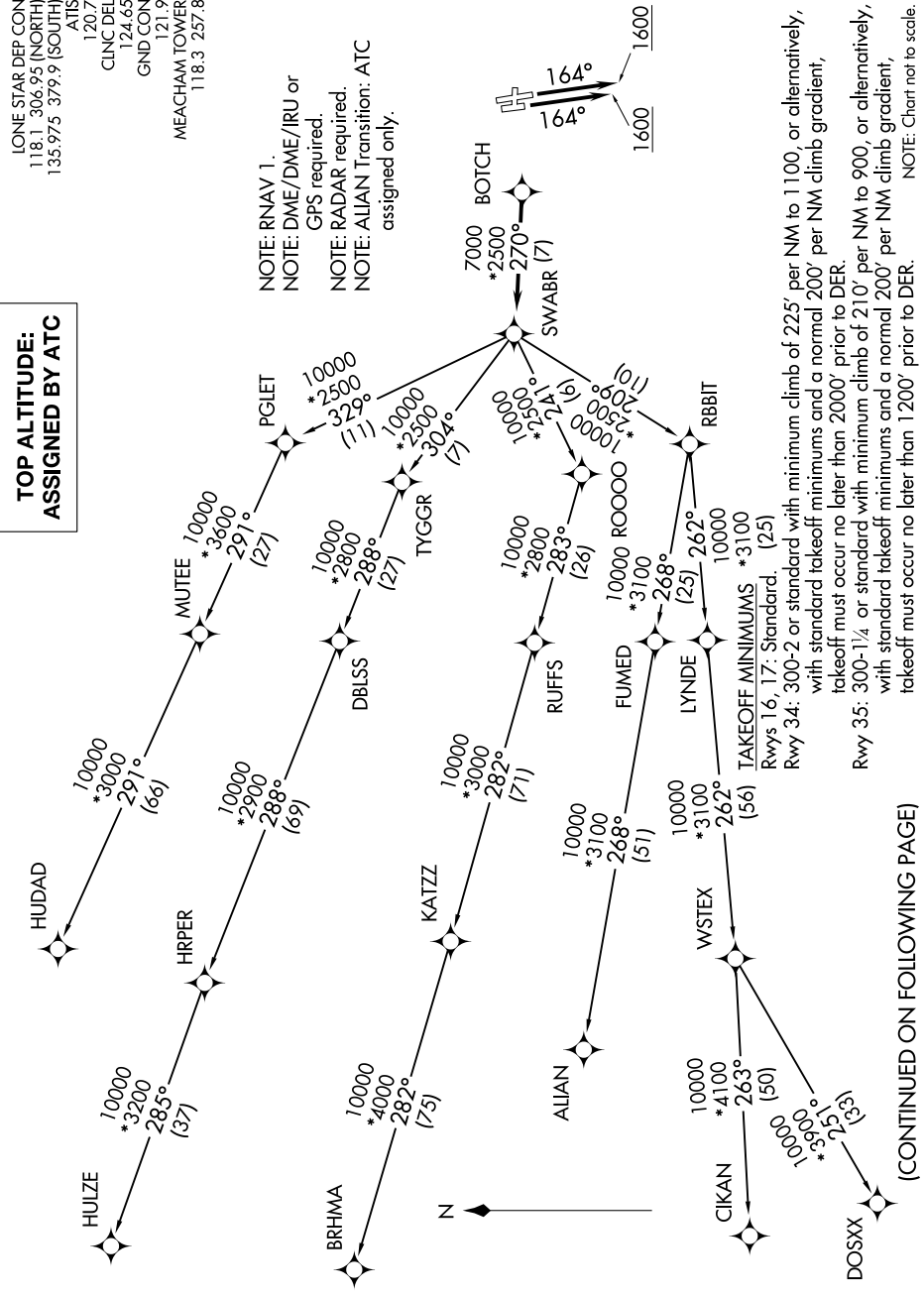
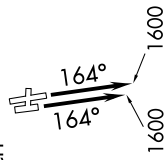
FORT WORTH, TEXAS

SC-2, 28 NOV 2024 to 26 DEC 2024

## TOP ALTITUDE: ASSIGNED BY ATC

LONE STAR DEP CON  
118.1 306.95 (NORTH)  
135.975 379.9 (SOUTH)  
ATIS  
120.7  
CLNC DEL  
124.65  
GND CON  
121.9  
MEACHAM TOWER  
118.3 257.8

NOTE: RNAV 1.  
NOTE: DME/DME/IRU or  
GPS required.  
NOTE: RADAR required.  
NOTE: ALIAN Transition: ATC  
assigned only.



TAKEOFF MINIMUMS \*3100  
Rwys 16, 17: Standard. (25)  
Rwy 34: 300-2 or standard with minimum climb of 225' per NM to 1100, or alternatively,  
with standard takeoff minimums and a normal 200' per NM climb gradient,  
takeoff must occur no later than 2000' prior to DER.  
Rwy 35: 300-1/4 or standard with minimum climb of 210' per NM to 900, or alternatively,  
with standard takeoff minimums and a normal 200' per NM climb gradient,  
takeoff must occur no later than 1200' prior to DER.  
NOTE: Chart not to scale.

(CONTINUED ON FOLLOWING PAGE)

SC-2, 28 NOV 2024 to 26 DEC 2024