

(TEX5.FUZ) 24305

AL-159 (FAA)

FORT WORTH MEACHAM INTL (FTW)

FORT WORTH, TEXAS

# TEXOMA FIVE DEPARTURE

LONE STAR DEP CON  
118.1 306.95 (NORTH)  
135.975 379.9 (SOUTH)  
ATIS  
120.7  
CLNC DEL  
124.65  
GND CON  
121.9  
MEACHAM TOWER  
118.3 257.8

**TOP ALTITUDE:  
ASSIGNED BY ATC**

TULSA  
114.4 TUL  
Chan 91

RADAR and DME required.

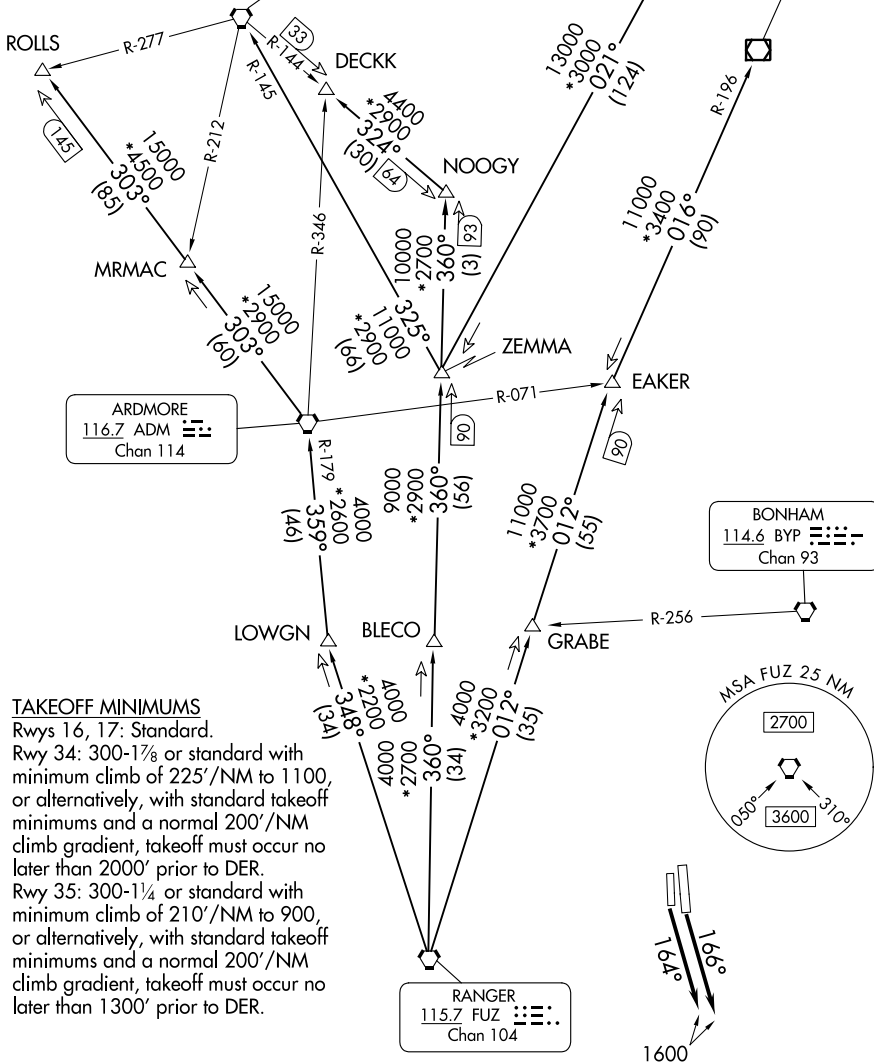
WILL ROGERS  
114.1 IRW  
Chan 88

OKMULGEE  
114.9 OKM  
Chan 96

ARDMORE  
116.7 ADM  
Chan 114

BONHAM  
114.6 BYP  
Chan 93

RANGER  
115.7 FUZ  
Chan 104



### TAKEOFF MINIMUMS

Rwys 16, 17: Standard.

Rwy 34: 300-1/8 or standard with minimum climb of 225'/NM to 1100, or alternatively, with standard takeoff minimums and a normal 200'/NM climb gradient, takeoff must occur no later than 2000' prior to DER.

Rwy 35: 300-1/4 or standard with minimum climb of 210'/NM to 900, or alternatively, with standard takeoff minimums and a normal 200'/NM climb gradient, takeoff must occur no later than 1300' prior to DER.

(CONTINUED ON FOLLOWING PAGE)

NOTE: Chart not to scale.

# TEXOMA FIVE DEPARTURE

(TEX5.FUZ) 25JAN24

FORT WORTH, TEXAS  
FORT WORTH MEACHAM INTL (FTW)

SC-2, 28 NOV 2024 to 26 DEC 2024