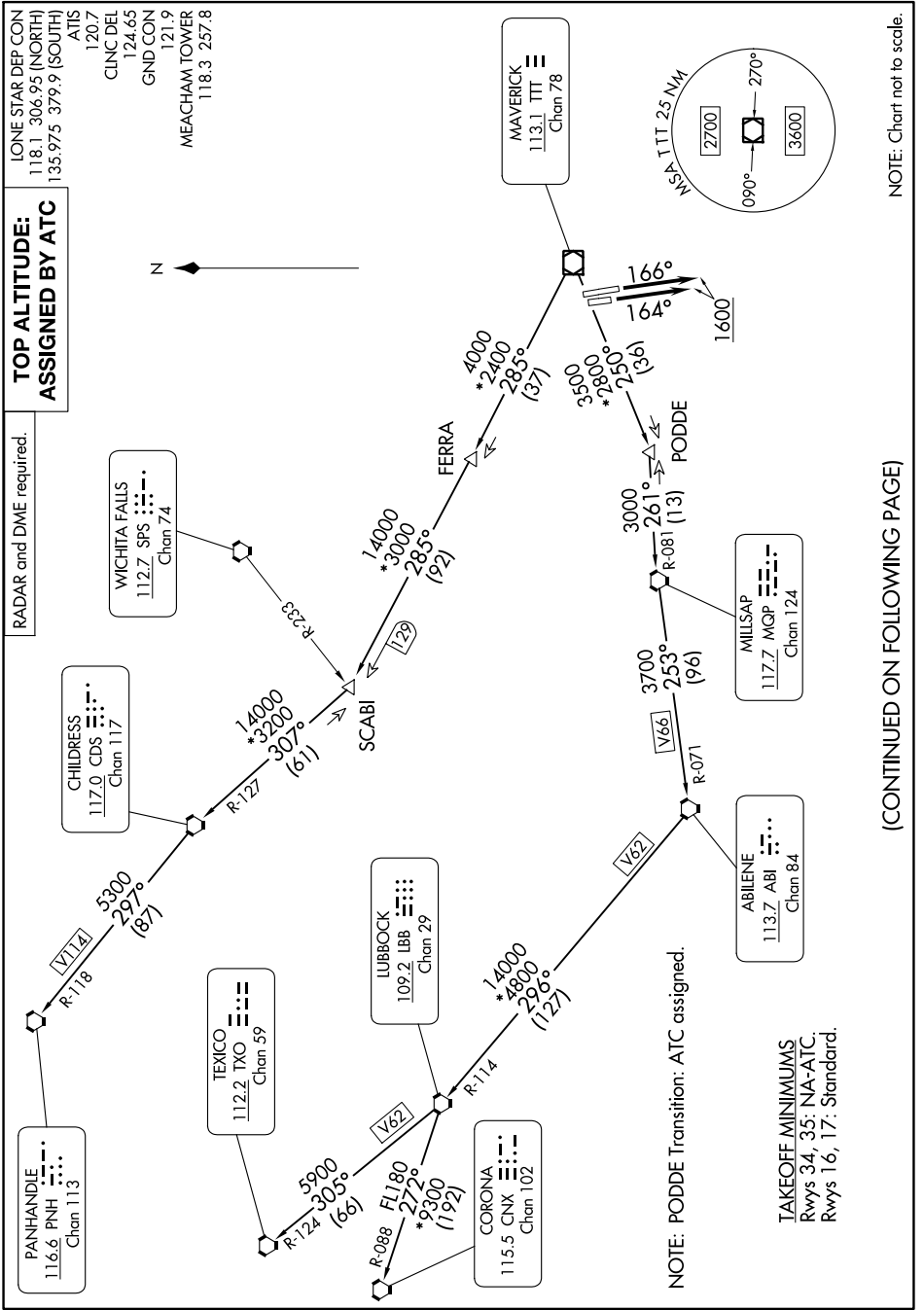


# WORTH ONE DEPARTURE

SC-2, 28 NOV 2024 to 26 DEC 2024



**TOP ALTITUDE:  
ASSIGNED BY ATC**

RADAR and DME required.

IONE STAR DEP CON  
 118.1 306.95 (NORTH)  
 135.975 379.9 (SOUTH)  
 ATIS  
 120.7  
 CNCL DEL  
 124.65  
 GND CON  
 121.9  
 MEACHAM TOWER  
 118.3 257.8

NOTE: PODDE Transition: ATC assigned.

**TAKEOFF MINIMUMS**  
 Rwy 34, 35: N/A-ATC.  
 Rwy 16, 17: Standard.

(CONTINUED ON FOLLOWING PAGE)

NOTE: Chart not to scale.

SC-2, 28 NOV 2024 to 26 DEC 2024

# WORTH ONE DEPARTURE