

WAAS CH 69631 W36A	APP CRS 002°	Rwy Idg 6501 TDZE 142 Apt Elev 162
--	------------------------	---

RNAV (GPS) RWY 36

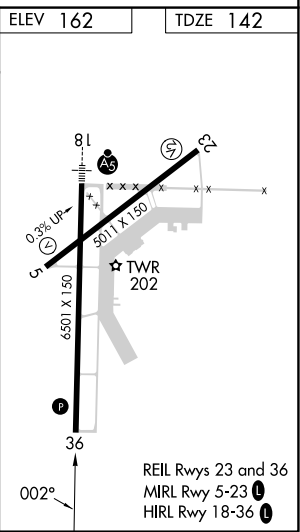
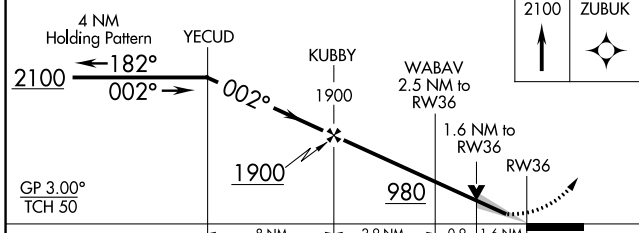
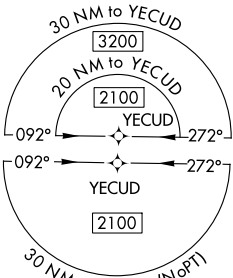
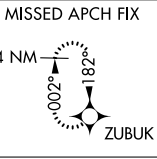
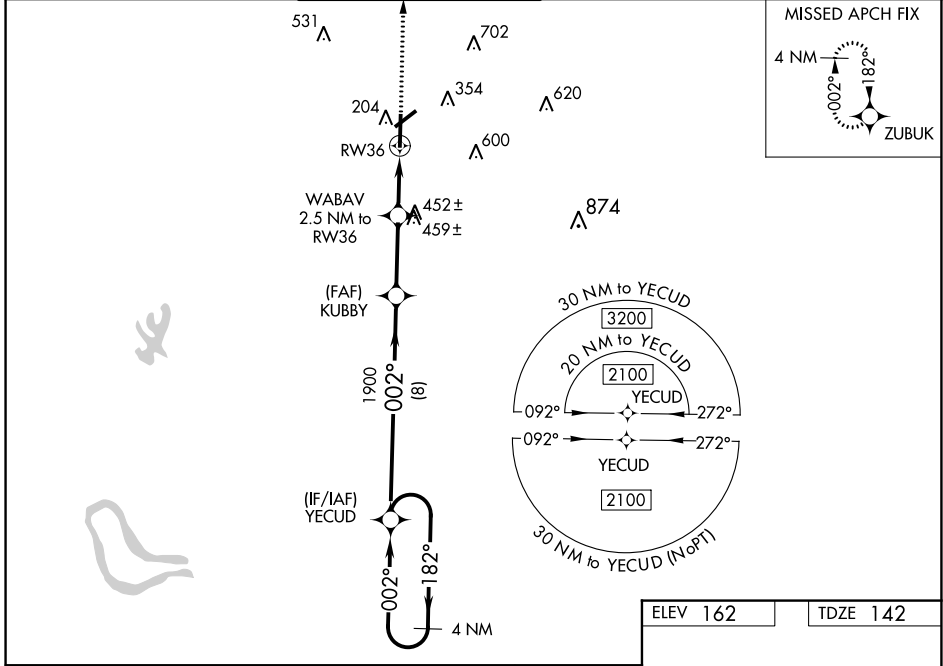
GREENWOOD-LEFLORE (GWO)

RNP APCH-GPS.

▼ For uncompensated Baro-VNAV systems, LNAV/VNAV NA below -22°C or above 54°C.
 ▲ VDP and Baro-VNAV NA when using Greenville altimeter setting. Circling Rwy 5, 23 NA at night. When local altimeter setting not received, use Greenville altimeter setting: increase LPV DA to 501 feet and visibility ½ SM, LNAV/VNAV DA to 667 feet and visibility ¾ SM; increase all MDAs 120 feet and visibility LNAV Cat C/D ¼ SM and Circling Cat C ½ SM.

MISSED APPROACH:
Climb to 2100 direct ZUBUK and hold.

ASOS 119.975	MEMPHIS CENTER 132.5 259.1	GREENWOOD TOWER * 118.35 (CTAF) 0 367.6	GND CON 125.55 373.4	CLNC DEL 125.55	UNICOM 122.95
------------------------	--------------------------------------	---	--------------------------------	---------------------------	-------------------------



CATEGORY	A	B	C	D
LPV DA		392-¾	250 (300-¾)	
LNAV/VNAV DA		558-1⅜	416 (400-1⅜)	
LNAV MDA	700-1	558 (600-1)	700-1⅝	558 (600-1⅝)
CIRCLING	760-1	598 (600-1)	1000-2½ 838 (900-2½)	1120-3 958 (1000-3)

SC-4, 28 NOV 2024 to 26 DEC 2024

SC-4, 28 NOV 2024 to 26 DEC 2024