

# TACAN Y RWY 8

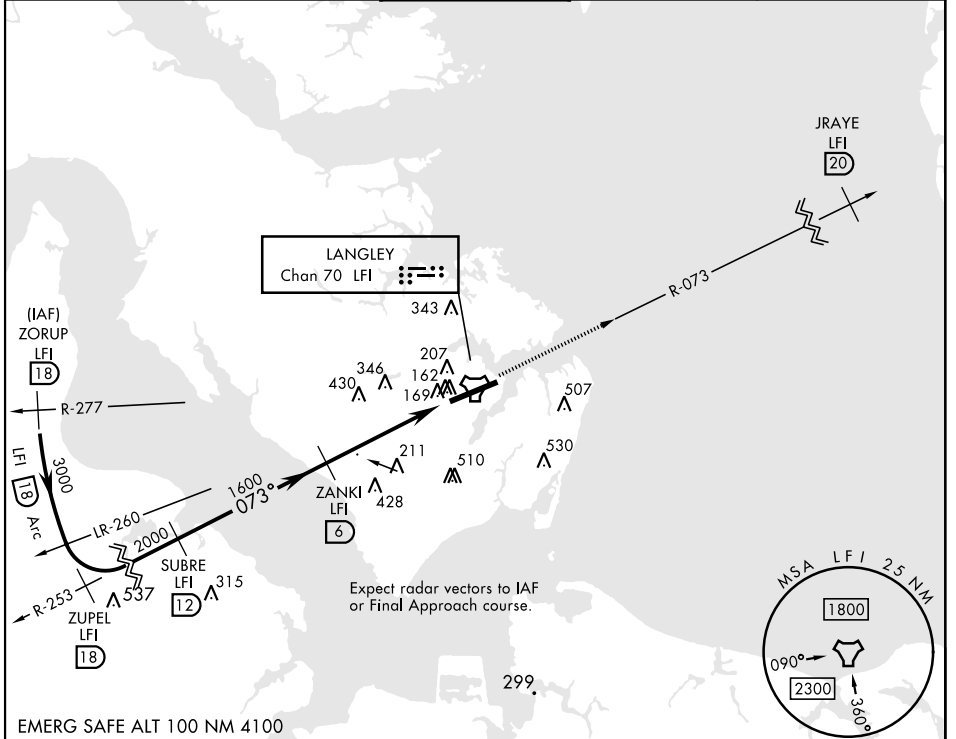
TACAN LFI Chan <b>70</b>	APCH CRS <b>073°</b>	Rwy ldg <b>10,002</b> TDZE <b>8</b> Arpt Elev <b>8</b>
--------------------------	----------------------	--

[USAF]

LANGLEY AFB (KLF1)

<p>▼ *When ALS inop, increase CAT AB RVR to 55 and vis to 1 mile, CAT CDE vis to 1 3/8 miles. **Circling not authorized S of Rwy 8-26.</p>	<p>ALSF-1 <b>A1</b></p>	<p>MISSED APPROACH: Climb to 3000 via LFI R-073 to 20 DME (JRAYE), then as instructed by ATC.</p>
--	-----------------------------	---

<p>ATIS ★ <b>270.1</b></p>	<p>NORFOLK APP CON <b>125.7 335.625</b></p>	<p>TOWER ★ <b>125.0 253.5</b></p>	<p>GND CON <b>121.7 275.8</b></p>	<p>CLNC DEL <b>118.85 257.625</b></p>
--------------------------------	---	---------------------------------------	---------------------------------------	---



NE-3, 28 NOV 2024 to 26 DEC 2024

NE-3, 28 NOV 2024 to 26 DEC 2024

<p>ZORUP LFI 18</p> <p>ZUPEL LFI 18</p> <p>3000</p> <p>2.87° TCH 54</p>		<p>SUBRE LFI 12</p> <p>2000</p>		<p>ZANKI LFI 6</p> <p>1600</p>		<p>LFI 2.3</p> <p>FUNDY LFI 1.4</p> <p>4.6 NM</p>		<p>LFI TACAN</p> <p>0.5</p>	
<p>3000</p> <p>JRAYE LFI 20</p> <p>ELEV 8</p> <p>TDZE 8</p>		<p>122</p> <p>215</p> <p>10,002 x 150</p> <p>TWR 113</p> <p>210</p> <p>210</p> <p>210</p>							
CATEGORY	A	B	C	D	E				
S-8*	480/24	472 (500-1/2)	480/50	472	(500-1)				
CIRCLING**	540-1 532 (600-1)	580-1 572 (600-1)	700-2 692 (700-2)	760-2 1/2 752 (800-2 1/2)	760-2 3/4 752 (800-2 3/4)	HIRL Rwy 8-26			

# TACAN Y RWY 8