

LOC I-HQA <b>110.9</b>	APP CRS <b>308°</b>	Rwy Idg <b>8129</b>
		TDZE <b>308</b>
		Apt Elev <b>310</b>

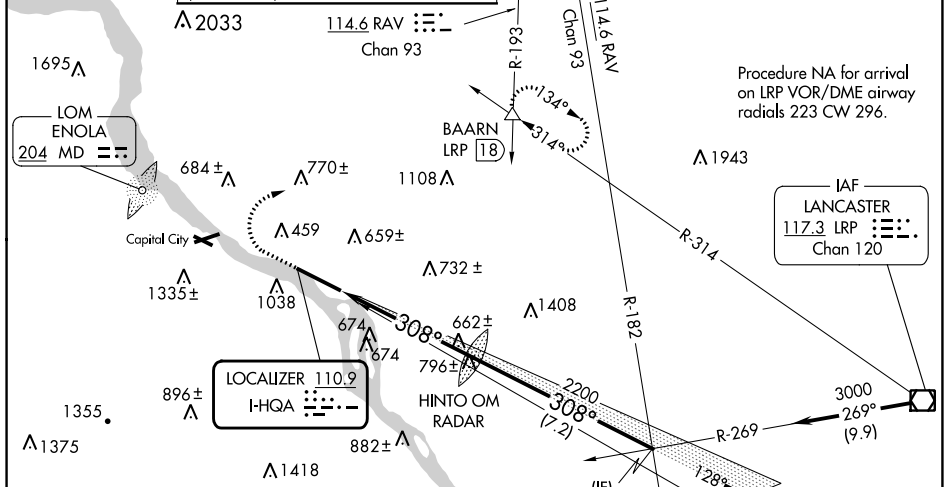
# ILS or LOC RWY 31

HARRISBURG INTL (MDT)

**⚠** Circling NA south of Rwy 13-31.  
**⚠** -17°C

MISSED APPROACH: Climb to 800 then climbing right turn to 3000 on heading 090° and RAV VORTAC R-193 to BAARN INT/LRP 18 DME and hold.

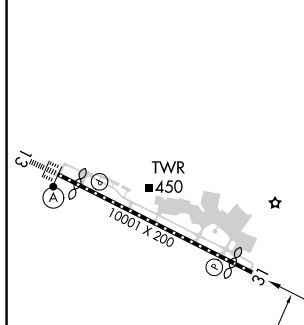
ATIS <b>118.8</b>	HARRISBURG APP CON (080°-179°) <b>126.45 281.525</b> (180°-329°) <b>124.1 273.525</b> (330°-079°) <b>118.25 269.45</b>	HARRISBURG INTL TOWER <b>124.8 269.35</b>	GND CON <b>121.7 348.6</b>
----------------------	---	--	-------------------------------



ALTERNATE MISSED APCH FIX

ENOLA 204 MD

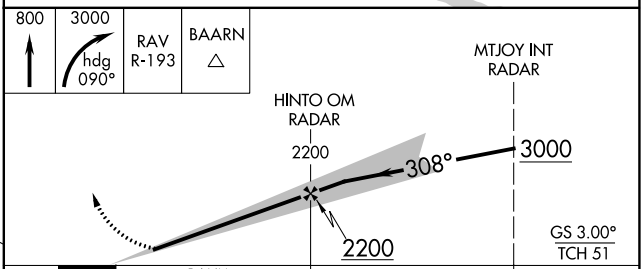
ELEV 310	<b>D</b>	TDZE 308
----------	----------	----------



TDZ/CL Rwy 13  
REIL Rwy 31  
HIRL Rwy 13-31

FAF to MAP 5.6 NM

Knots	60	90	120	150	180
Min:Sec	5:36	3:44	2:48	2:14	1:52



CATEGORY	A	B	C	D
S-ILS 31	558/50		250 (300-1)	
S-LOC 31	920/50	612 (700-1)	920-1 3/4 612 (700-1 3/4)	920-2 612 (700-2)
CIRCLING	920-1 610 (700-1)	980-1 670 (700-1)	1000-2 690 (700-2)	1440-3 1130 (1200-3)

NE-4, 28 NOV 2024 to 26 DEC 2024

NE-4, 28 NOV 2024 to 26 DEC 2024