

WAAS CH 86313 W13A	APP CRS 128°	Rwy Idg TDZE Apt Elev	8070 308 310
--	------------------------	-----------------------------	---

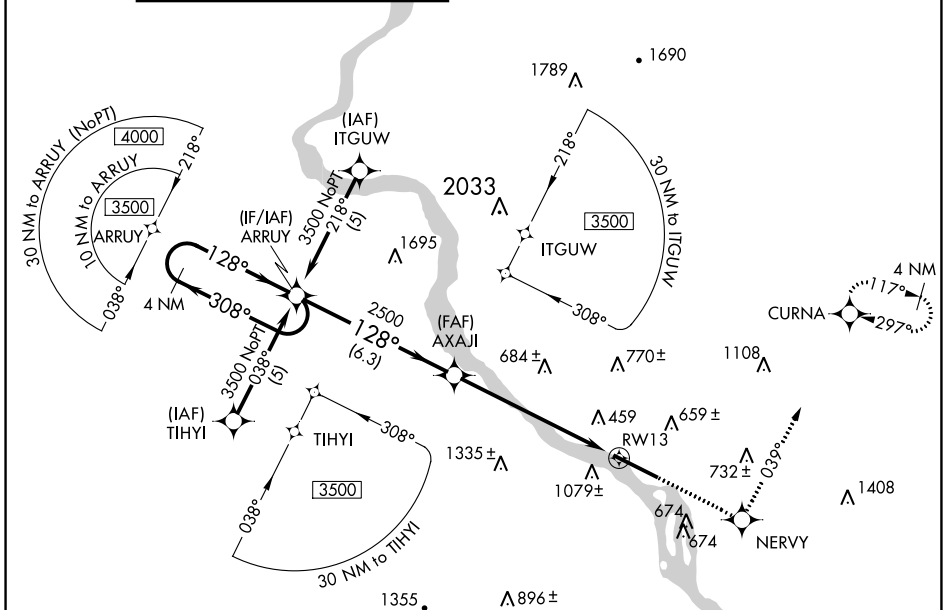
RNAV (GPS) RWY 13

HARRISBURG INTL (MDT)

⚠ Circling NA south of Rwy 13-31. For uncompensated Baro-VNAV systems, LNAV/VNAV NA below -1.5°C (5°F) or above 48°C (118°F). DME/DME RNP-0.3 NA. Inop table does not apply to LNAV/VNAV all Cats.

ALSF-2
(A) MISSED APPROACH: Climb to 3500 direct NERVY and via track 039° to CURNA and hold, continue climb-in-hold to 3500.

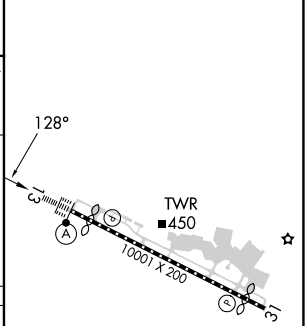
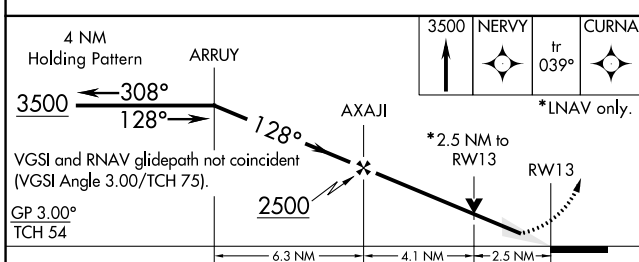
ATIS 118.8	HARRISBURG APP CON (080°-179°) 126.45 281.525 (180°-329°) 124.1 273.525 (330°-079°) 118.25 269.45	HARRISBURG INTL TOWER 124.8 269.35	GND CON 121.7 348.6
----------------------	---	--	-------------------------------



NE-4, 28 NOV 2024 to 26 DEC 2024

NE-4, 28 NOV 2024 to 26 DEC 2024

ELEV 310	D TDZE 308
----------	-------------------



CATEGORY	A	B	C	D
LPV DA		558/24	250 (300-½)	
LNAV/VNAV DA		1572-5	1264 (1300-5)	
LNAV MDA	1180/24 872 (900-½)	1180/40 872 (900-¾)	1180-2 872 (900-2)	1180-2¼ 872 (900-2¼)
CIRCLING	1180-1 870 (900-1)	1180-1¼ 870 (900-1¼)	1180-2½ 870 (900-2½)	1440-3 1130 (1200-3)

TDZ/CL Rwy 13
REIL Rwy 31
HIRL Rwy 13-31