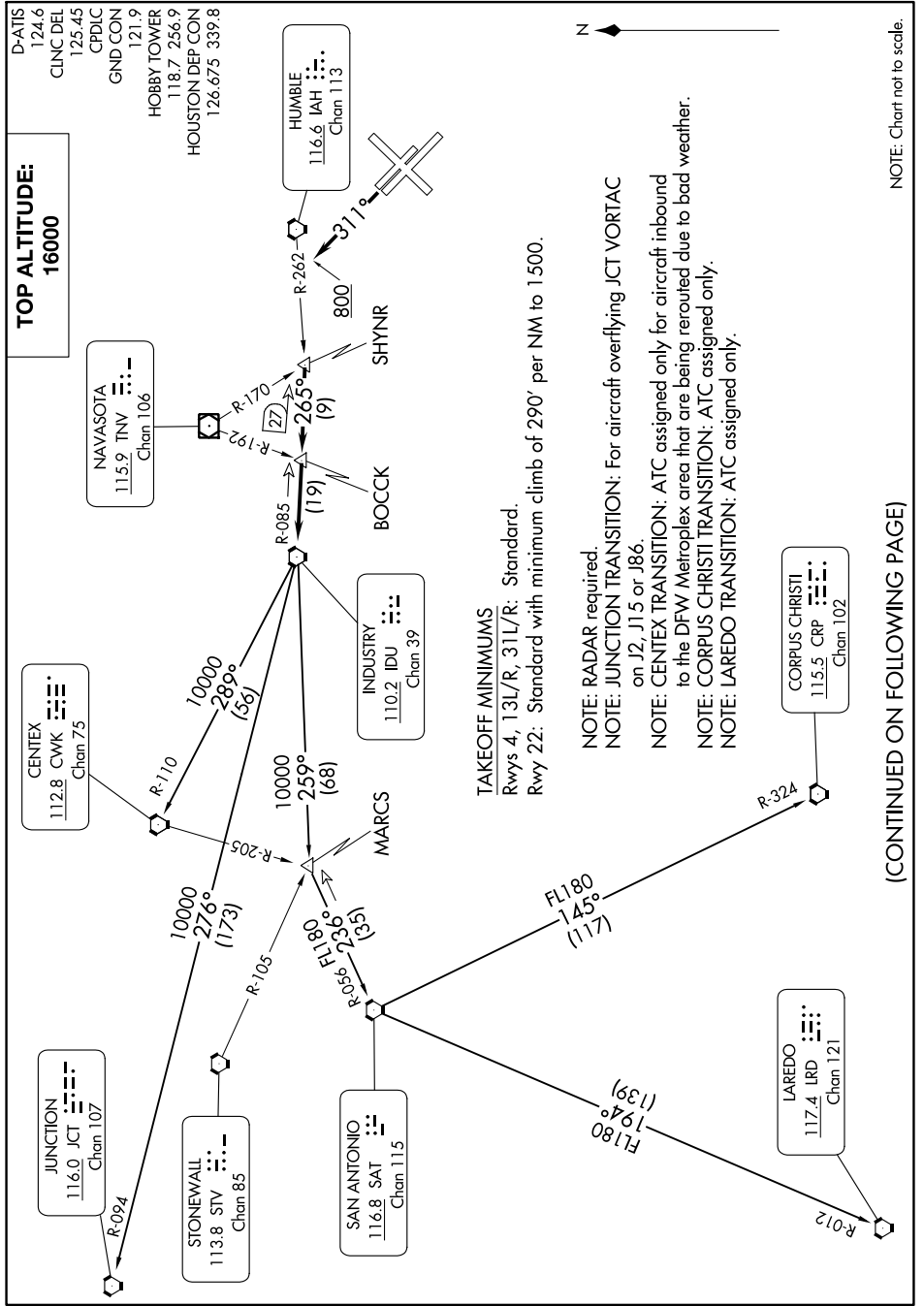


# INDUSTRY ONE DEPARTURE

WILLIAM P HOBBY (HOU)  
HOUSTON, TEXAS

SC-5, 28 NOV 2024 to 26 DEC 2024



**TOP ALTITUDE:**  
16000

**TAKEOFF MINIMUMS**  
 Rwys 4, 13L/R, 31L/R: Standard.  
 Rwy 22: Standard with minimum climb of 290' per NM to 1500.

- NOTE: RADAR required.
- NOTE: JUNCTION TRANSITION: For aircraft overflying JCT VORTAC on J2, J15 or J86.
- NOTE: CENTEX TRANSITION: ATC assigned only for aircraft inbound to the DFW Metroplex area that are being rerouted due to bad weather.
- NOTE: CORPUS CHRISTI TRANSITION: ATC assigned only.
- NOTE: LAREDO TRANSITION: ATC assigned only.

(CONTINUED ON FOLLOWING PAGE)

NOTE: Chart not to scale.

# INDUSTRY ONE DEPARTURE

HOUSTON, TEXAS  
WILLIAM P HOBBY (HOU)

SC-5, 28 NOV 2024 to 26 DEC 2024