

WAAS CH <b>77510</b> <b>W31A</b>	APP CRS <b>311°</b>	Rwy ldg <b>7602</b> TDZE <b>43</b> Apt Elev <b>46</b>
--	------------------------	---

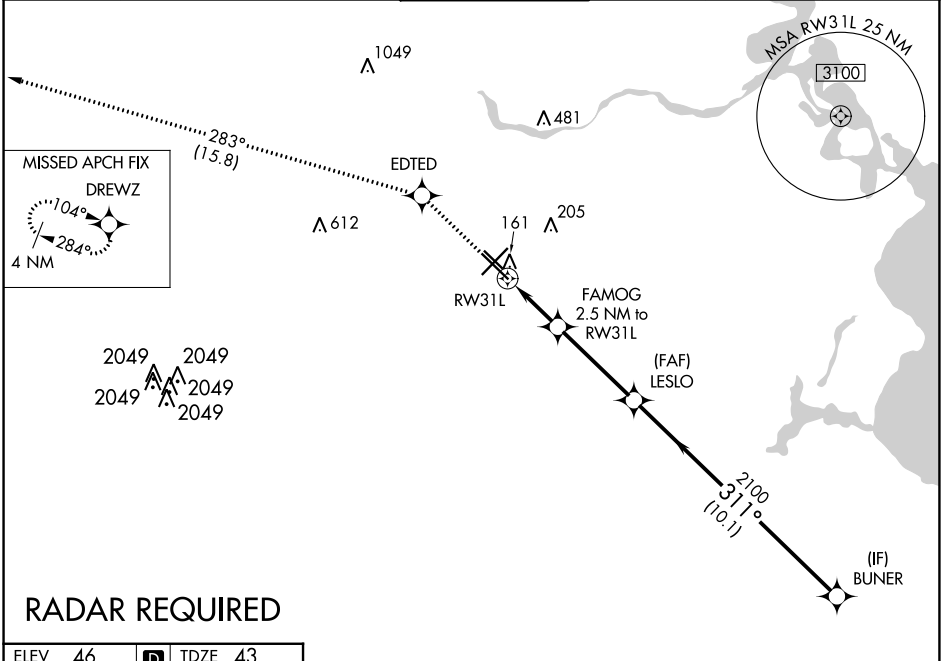
# RNAV (GPS) RWY 31L

WILLIAM P HOBBY (HOU)

**⚠** For uncompensated Baro-VNAV systems, LNAV/VNAV NA below -1.5°C (5°F) or above 43°C (109°F). DME/DME RNP-0.3 NA.

MISSED APPROACH: Climb to 2000 direct EDTED and on track 283° to DREWZ and hold.

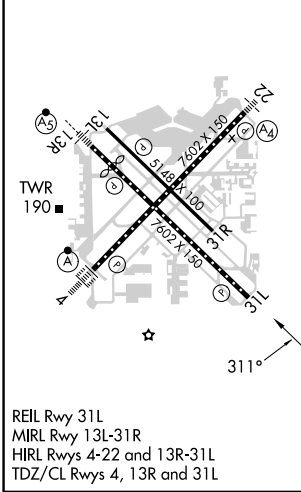
D-ATIS <b>124.6</b>	HOUSTON APP CON <b>120.05 379.1</b> EAST <b>124.35 316.15</b> WEST	HOBBY TOWER <b>118.7 256.9</b>	GND CON <b>121.9</b>	CLNC DEL <b>125.45</b>	CPDLC
------------------------	--	-----------------------------------	-------------------------	---------------------------	-------



SC-5, 28 NOV 2024 to 26 DEC 2024

SC-5, 28 NOV 2024 to 26 DEC 2024

ELEV 46	<b>D</b>	TDZE 43
---------	----------	---------



2000	EDTED	DREWZ	BUNER	
↑	✧	tr 283°	✧	
*LNAV only.				
FAMOG 2.5 NM to RW31L				
LESLO 2100				
*1.2 NM to RW31L				
*880				
2100				
311°				
4000				
GP 3.00°				
TCH 58				
1.2 NM 1.3 3.8 NM 10.1 NM				
CATEGORY	A	B	C	D
LPV DA	243/40		200 (200-¾)	
LNAV/VNAV DA	323/45		280 (300-⅞)	
LNAV MDA	500/55	457 (500-1)	500-1⅜	457 (500-1⅜)
<b>C</b> CIRCLING	500-1 454 (500-1)	520-1 474 (500-1)	740-2¼	694 (700-2¼)