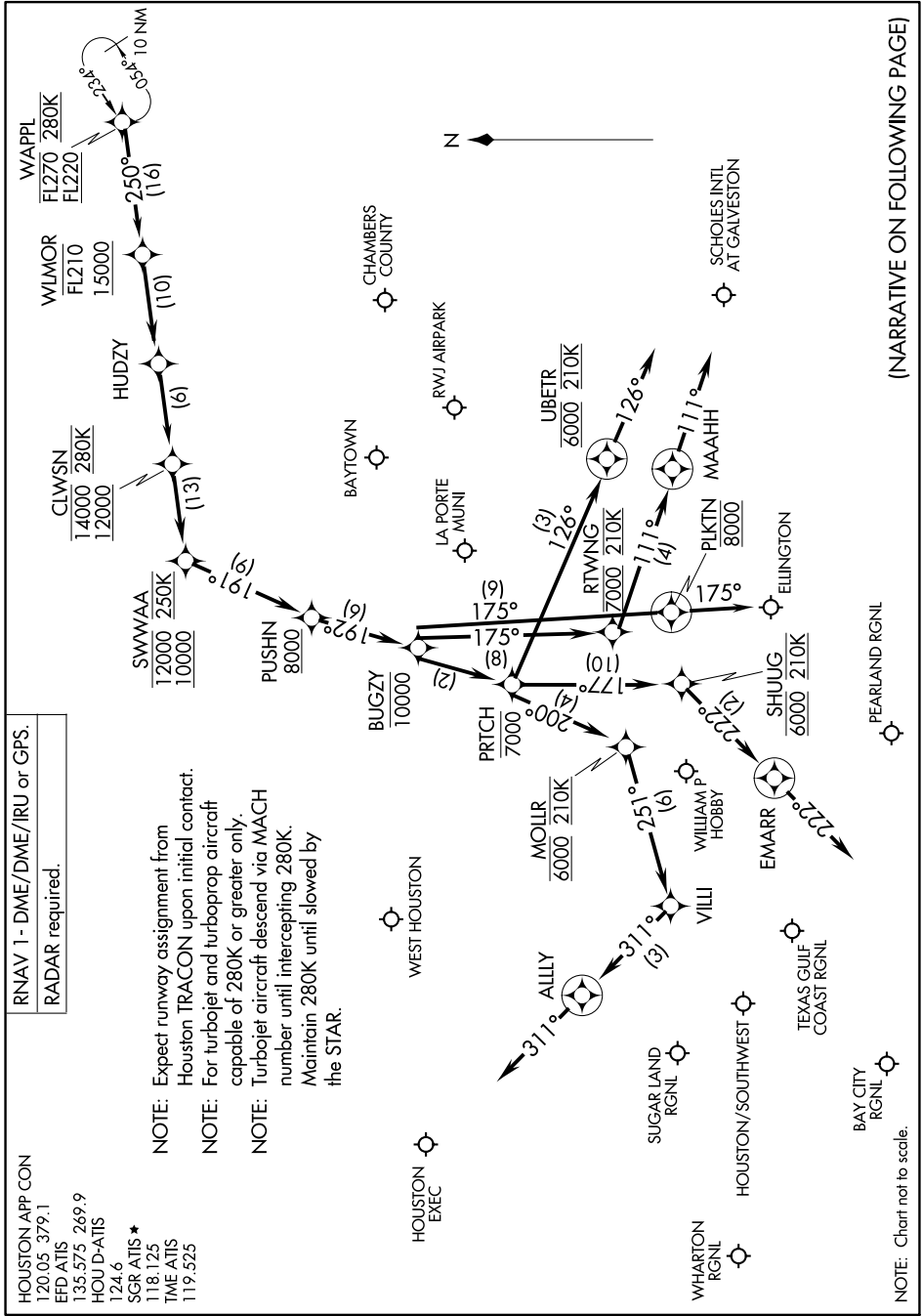


WAPPL SIX ARRIVAL (RNAV) Arrival Routes

HOUSTON, TEXAS

SC-5, 28 NOV 2024 to 26 DEC 2024



RNAV 1 - DME/DME/IRU or GPS.
 RADAR required.

- NOTE: Expect runway assignment from Houston TRACON upon initial contact.
- NOTE: For turbojet and turboprop aircraft capable of 280K or greater only.
- NOTE: Turbojet aircraft descend via MACH number until intercepting 280K. Maintain 280K until slowed by the STAR.

HOUSTON APP CON
 120.05 379.1
 EFD ATIS
 135.575 269.9
 HOU D-ATIS
 124.6
 SGR ATIS ★
 118.125
 TME ATIS
 119.525

(NARRATIVE ON FOLLOWING PAGE)

SC-5, 28 NOV 2024 to 26 DEC 2024

WAPPL SIX ARRIVAL (RNAV) Arrival Routes

HOUSTON, TEXAS

NOTE: Chart not to scale.