

# HI-VOR or TACAN Z RWY 26

VORTAC LBB <b>109.2</b> Chan <b>29</b>	APCH CRS <b>282°</b>	Rwy Idg TDZE Arpt Elev <b>8003</b> <b>3255</b> <b>3282</b>
--	-------------------------	---

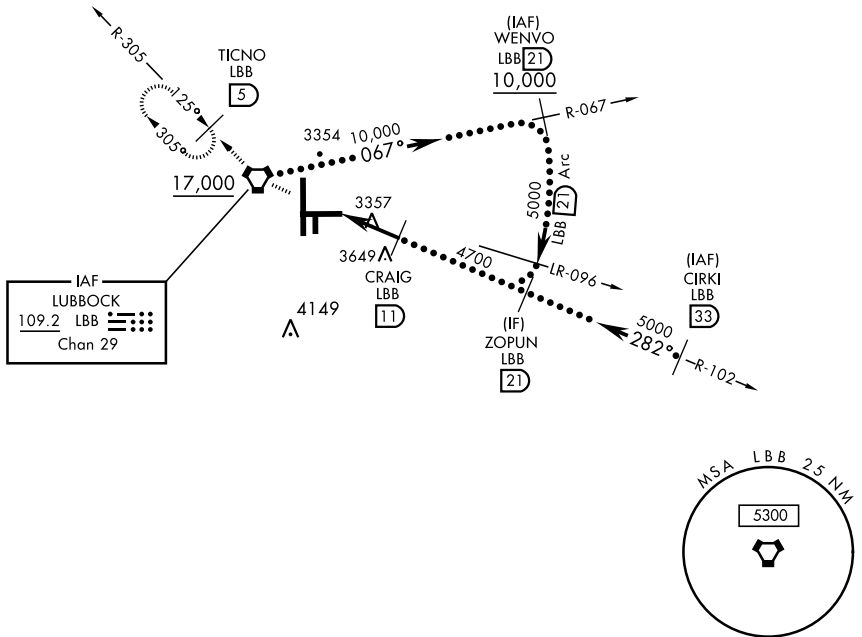
LUBBOCK PRESTON SMITH INTL (KLBB)

DME required. RADAR required for entry at CIRKI.  
 \* When ALS inop, increase CAT E vis to 1¼.

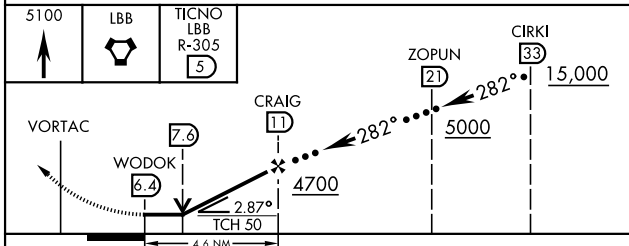
MALSR MISSED APPROACH: Climb and maintain 5100 direct LBB VORTAC and via LBB R-305 to TICNO (LBB 5 DME) and hold.

ATIS <b>125.3 270.275</b>	APP CON <b>119.2 351.8</b>	TOWER <b>120.5 239.3</b>	GND CON <b>121.9 348.6</b>	CLNC DEL <b>125.8 281.55</b>
------------------------------	-------------------------------	-----------------------------	-------------------------------	---------------------------------

Procedure NA for arrival on LBB VORTAC airway R-052 CW R-114.



EMERG SAFE ALT 100 NM 7300



CATEGORY	C	D	E
S-26 *	3680/40	424	(400-¾)
CIRCLING	3880-1½ 598 (600-1½)	3940-2 658 (700-2)	4100-3 818 (900-3)

ELEV 3282	<b>D</b>	TDZE 3255
-----------	----------	-----------

HIRL Rwy 8-26, 17R-35L  
REL Rwy 8

LUBBOCK, TEXAS 33°40'N-101°49'W LUBBOCK PRESTON SMITH INTL (KLBB)

Amdt 1A 25MAR21

# HI-VOR or TACAN Z RWY 26

SC-2, 28 NOV 2024 to 26 DEC 2024

SC-2, 28 NOV 2024 to 26 DEC 2024