

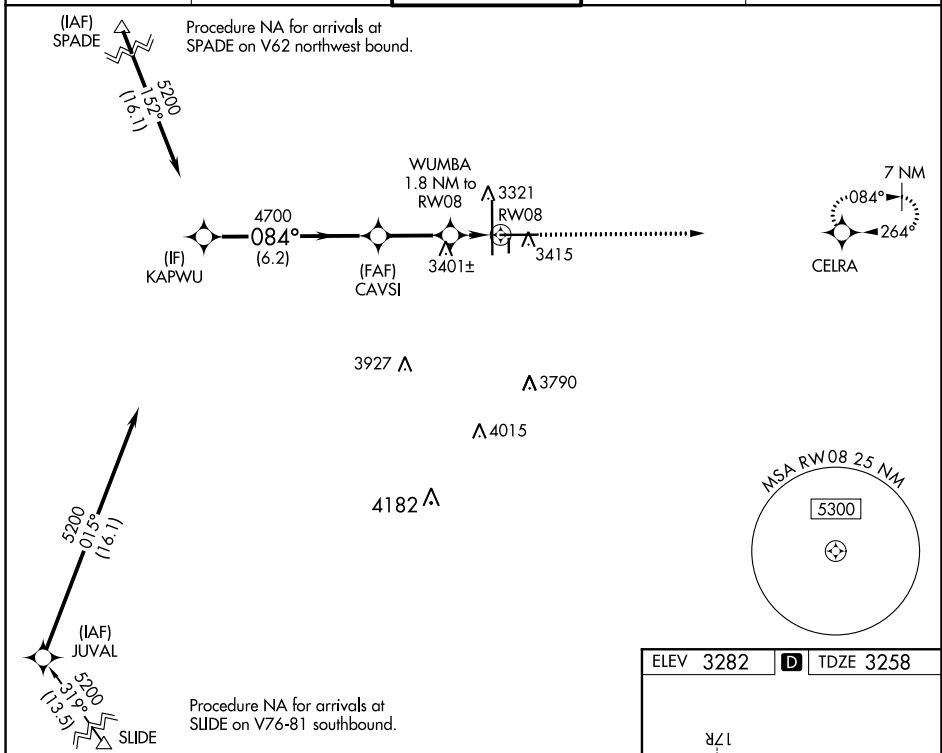
WAAS CH 97327 W08A	APP CRS 084°	Rwy Idg TDZE Apt Elev	8003 3258 3282
--	------------------------	-----------------------------	---

RNAV (GPS) RWY 8

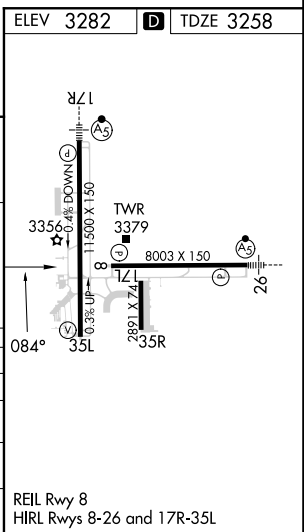
LUBBOCK PRESTON SMITH INTL (LBB)

RNP APCH.	MISSED APPROACH: Climb to 5000 direct CELRA and hold.
-----------	---

ATIS 125.3 270.275	LUBBOCK APP CON 119.2 351.8	LUBBOCK TOWER 120.5 239.3	GND CON 121.9 348.6	CLNC DEL 125.8 281.55
------------------------------	---------------------------------------	-------------------------------------	-------------------------------	---------------------------------



KAPWU	5200	084°	CAVSI	4700	WUMBA 1.8 NM to RW08	*3880	*1 NM to RW08	RW08	*LNAV only.
	GP 3.00° TCH 50			6.2 NM					
CATEGORY	A	B	C	D	E				
LPV DA	3458- ³ / ₄			200 (200- ³ / ₄)					
LNAV/VNAV DA	3544- ⁷ / ₈			286 (300- ⁷ / ₈)					
LNAV MDA	3640-1	382 (400-1)	3640-1 ¹ / ₈		382 (400-1 ¹ / ₈)				
CIRCLING	3720-1 438 (500-1)	3740-1 458 (500-1)	3880-1 ¹ / ₂ 598 (600-1 ¹ / ₂)	3940-2 658 (700-2)	4100-3 818 (900-3)				



SC-2, 28 NOV 2024 to 26 DEC 2024

SC-2, 28 NOV 2024 to 26 DEC 2024