

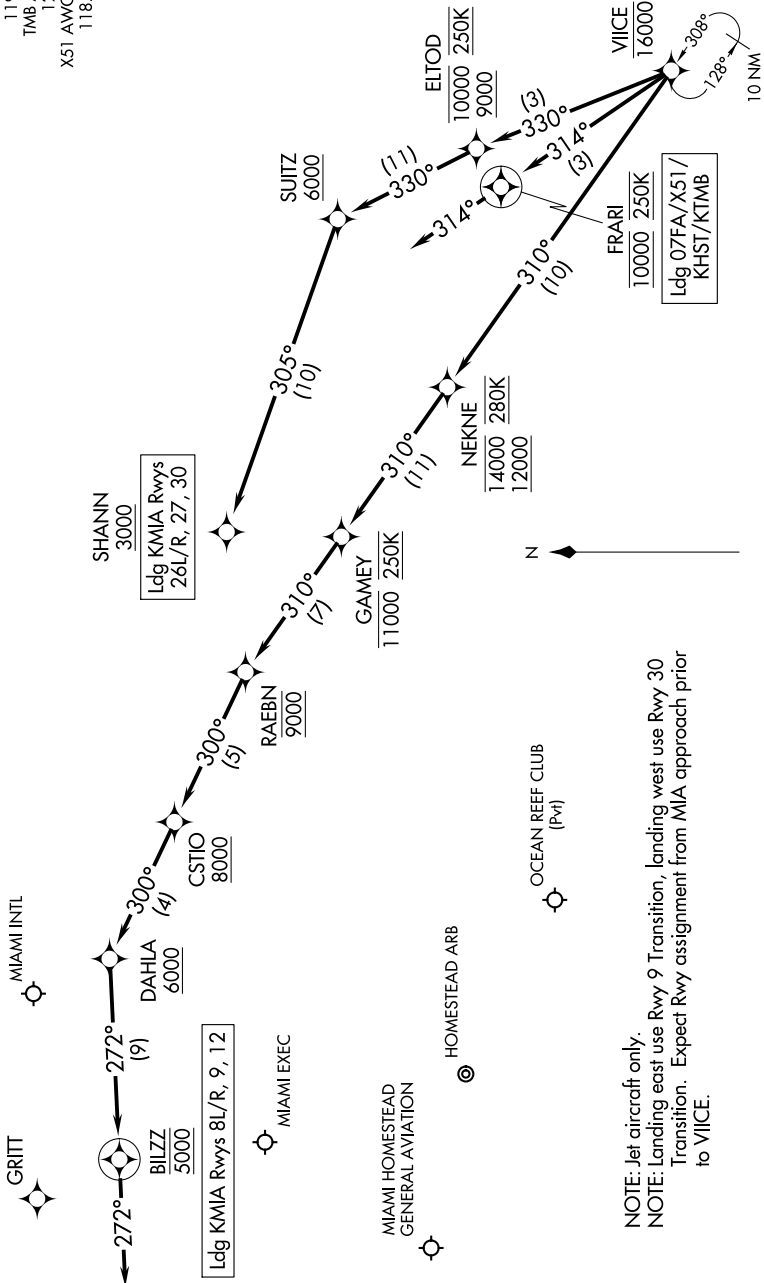
# VIICE TWO ARRIVAL (RNAV) Arrival Routes

MIAMI, FLORIDA

SE-3, 28 NOV 2024 to 26 DEC 2024

RNAV 1 - DME/DME/IRU or GPS.  
RADAR required.

MIAMI APP CON  
120.5 350.225  
KHST ATIS ★  
132.275 269.9  
MIA D-ATIS  
119.15  
TMB ATIS  
124.0  
X51 AWOS-3  
118.375



NOTE: Jet aircraft only.  
NOTE: Landing east use Rwy 9 Transition, landing west use Rwy 30 Transition. Expect Rwy assignment from MIA approach prior to VIICE.

(NARRATIVE ON FOLLOWING PAGE)

NOTE: Chart not to scale.

SE-3, 28 NOV 2024 to 26 DEC 2024

# VIICE TWO ARRIVAL (RNAV) Arrival Routes

MIAMI, FLORIDA