

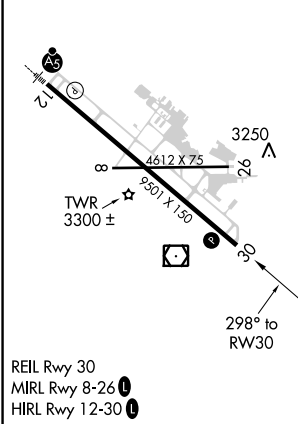
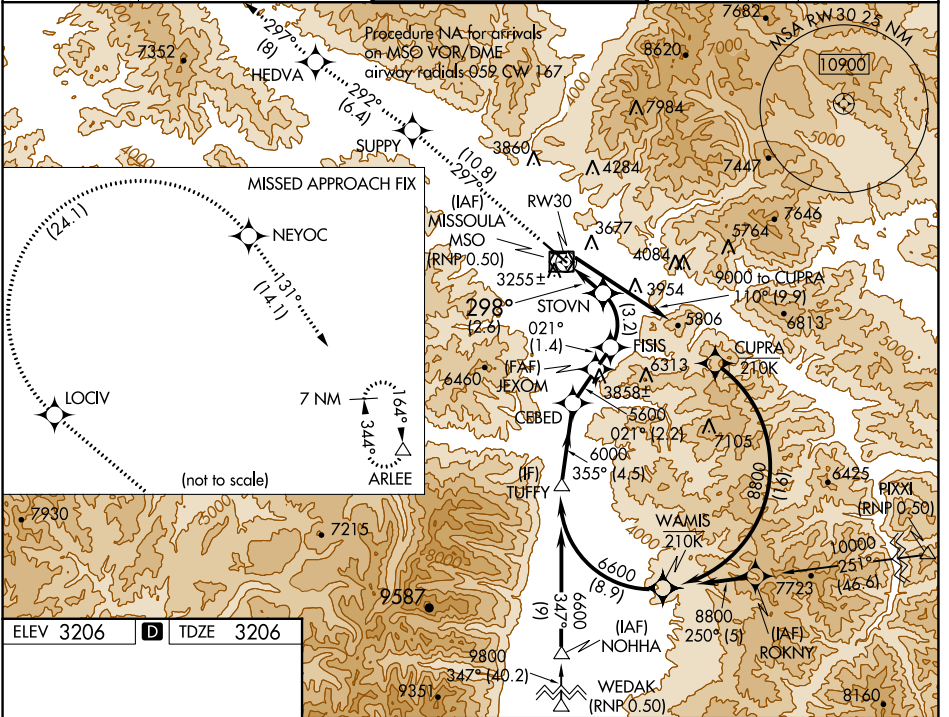
APP CRS	Rwy Idg	9501
298°	TDZE	3206
	Apt Elev	3206

RNAV (RNP) RWY 30

MISSOULA MONTANA (MSO)

RNP AR APCH. RF required.	MISSED APPROACH: Climb to 11000 on track 297° to SUPPY and on track 292° to HEDVA and on track 297° to LOCIV, then right turn to NEYOC and on track 131° to ARLEE and hold. *Misted approach requires minimum climb of 215 feet per NM to 5000.
<p>For uncompensated Baro-VNAV systems, procedure NA below -21°C (-5°F) or above 43°C (109°F). When local altimeter setting not received, procedure NA.</p> <p>-12°C</p>	

ATIS 126.65	SPOKANE APP CON * 124.9 298.95	MISSOULA TOWER * 118.4 (CTAF) 377.175	GND CON 121.9	UNICOM 122.95
-----------------------	--	---	-------------------------	-------------------------



11000 SUPPY	tr 297°	HEDVA	tr 292°	JEXOM	CEBED	TUFFY
				FISIS 5135	5600	6600
		STOVN 4089		021°	021°	355°
				5600	6000	6600
						GP 3.00°
						TCH 50
				2.6 NM	3.2 NM	1.4 NM
				2.2 NM	4.5 NM	
CATEGORY	A	B	C	D		
RNP 0.30 DA *	3524-1		318 (400-1)			
RNP 0.30 DA	3582-1¼		376 (400-1¼)			

AUTHORIZATION REQUIRED

NW-1, 28 NOV 2024 to 26 DEC 2024

NW-1, 28 NOV 2024 to 26 DEC 2024