

VOR/DME MSO <b>112.8</b> Chan 75	APP CRS <b>339°</b>	Rwy Idg TDZE Apt Elev <b>N/A</b> <b>N/A</b> <b>3206</b>
--	------------------------	--

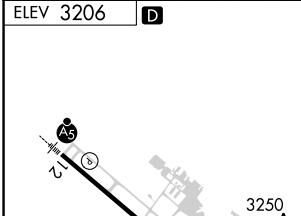
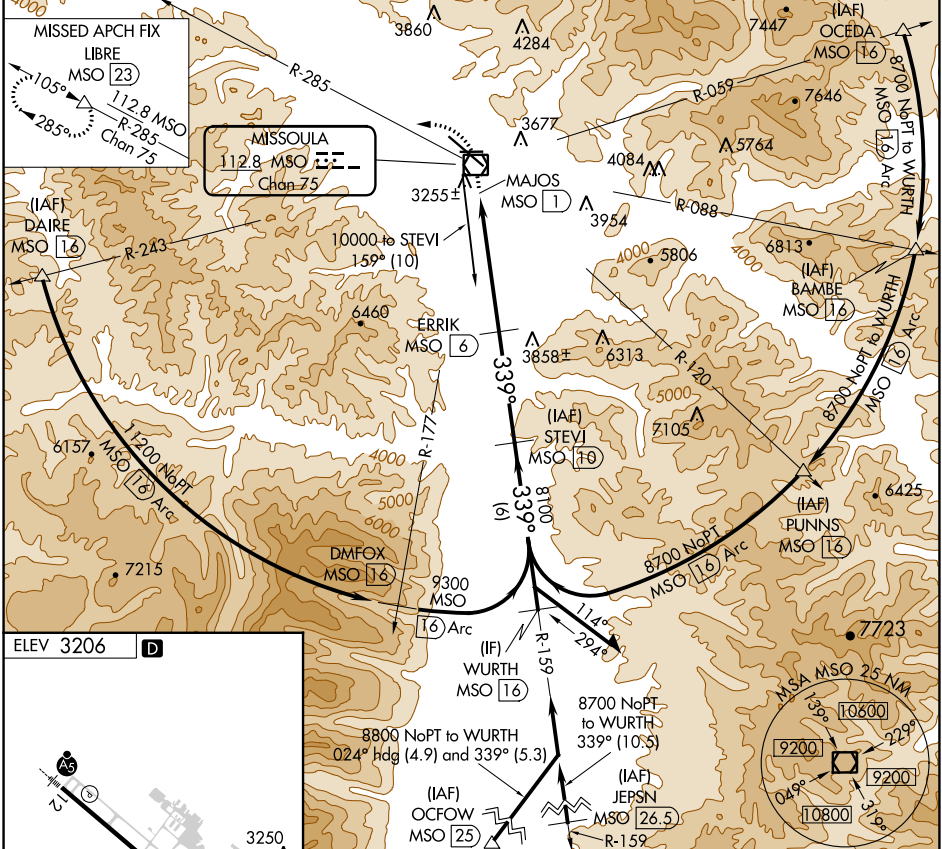
# VOR-B

MISSOULA MONTANA (MSO)

RADAR required for procedure entry at JEPSN. DME required.

MISSED APPROACH: Climb to 9600 direct MSO VOR/DME and on MSO VOR/DME R-285 to LIBRE/MSO 23 DME and hold, continue climb-in-hold to 9600.

<p><b>V</b></p> <p><b>A</b></p> <p><b>33</b> -12°C</p>	<p>ATIS <b>126.65</b></p>	<p>SPOKANE APP CON ★ <b>124.9 298.95</b></p>	<p>MISSOULA TOWER ★ <b>118.4 (CTAF) 0 377.175</b></p>	<p>GND CON <b>121.9</b></p>	<p>UNICOM <b>122.95</b></p>
--	-------------------------------	--	---	---------------------------------	---------------------------------



NW-1, 28 NOV 2024 to 26 DEC 2024

NW-1, 28 NOV 2024 to 26 DEC 2024

CATEGORY	A	B	C	D
	4920-1 1/4 1714 (1800-1 1/4)	4920-1 1/2 1714 (1800-1 1/2)	4920-3 1714 (1800-3)	5160-3 1954 (2000-3)