

APP CRS	Rwy Idg	<b>5930</b>
<b>166°</b>	TDZE	<b>30</b>
	Apt Elev	<b>36</b>

# RNAV (GPS) RWY 19R

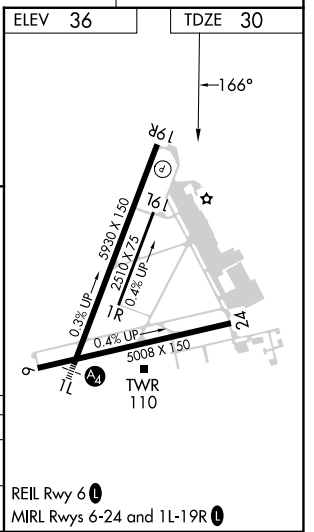
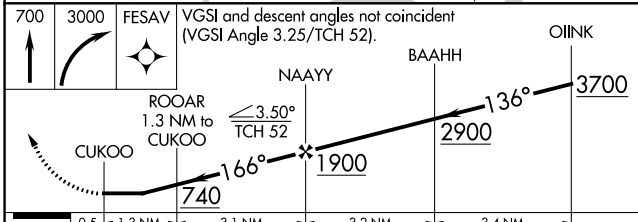
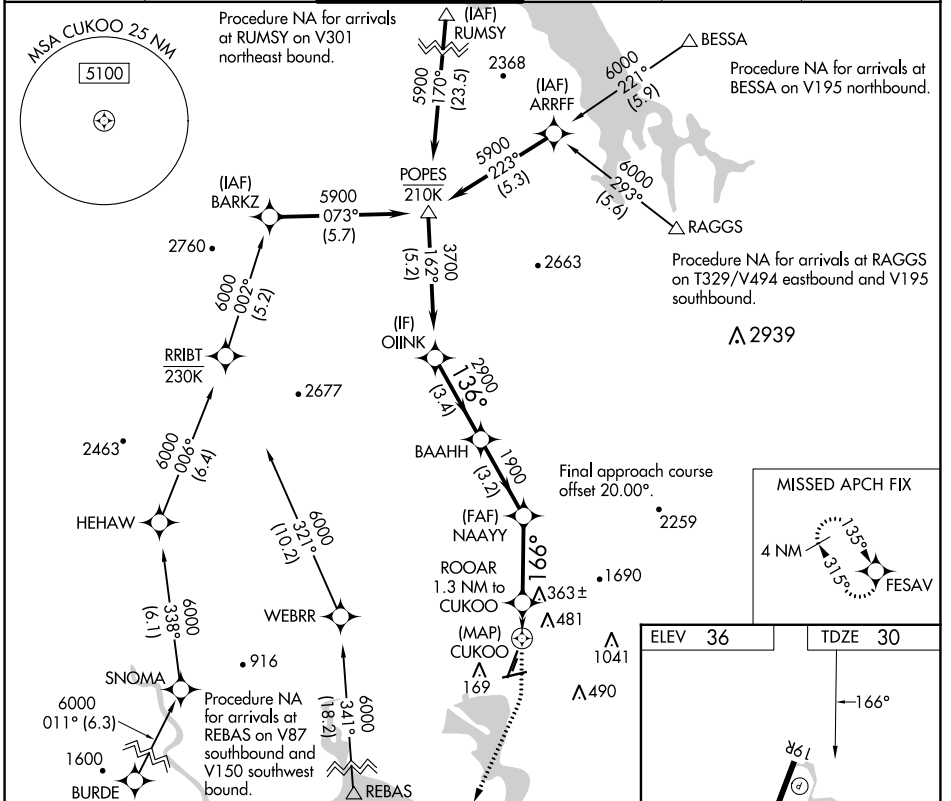
NAPA COUNTY (APC)

RNP APCH - GPS.

▼ Rwy 19R helicopter visibility reduction below ¾ SM NA.  
 ▲ Circling Cats A/B/C NA east of Rwy 19R and northwest of Rwy 24. Circling Cat D NA east of Rwy 19L-1R.

MISSED APPROACH: Climb to 700 then climbing right turn to 3000 direct FESAV and hold.

ATIS <b>124.05</b>	OAKLAND CENTER <b>127.8 353.5</b>	NAPA TOWER ★ <b>118.7 (CTAF) 257.8</b>	GND CON <b>121.7</b>	CLNC DEL <b>127.85</b>	UNICOM <b>122.95</b>
-----------------------	--------------------------------------	---	-------------------------	---------------------------	-------------------------



CATEGORY	A	B	C	D
LNVA MDA	680-1	650 (700-1)	680-1 7/8	650 (700-1 7/8)
CIRCLING	680-1	644 (700-1)	1280-3 1244 (1300-3)	1300-3 1264 (1300-3)

SW-2, 28 NOV 2024 to 26 DEC 2024

SW-2, 28 NOV 2024 to 26 DEC 2024