

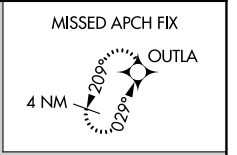
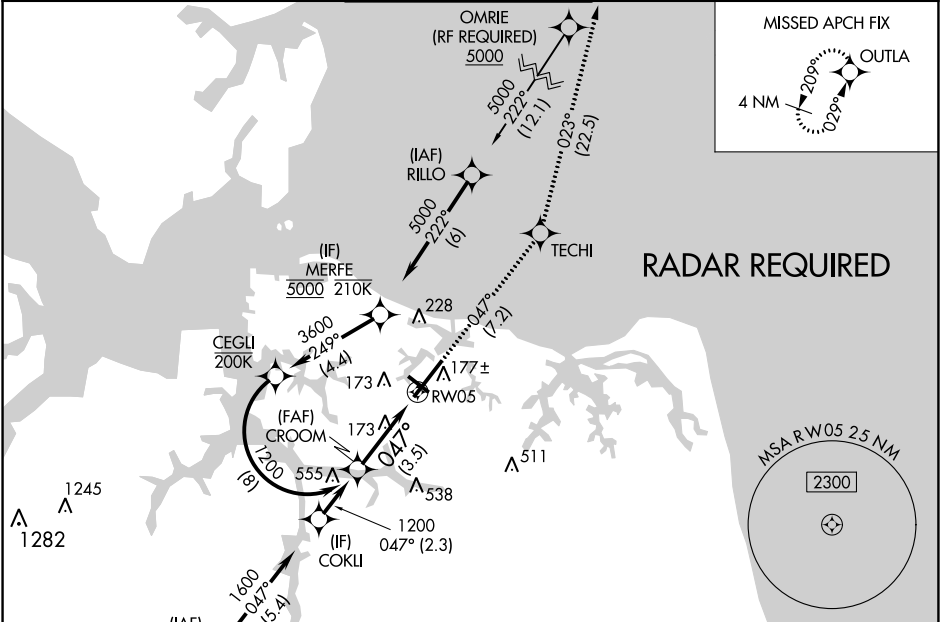
APP CRS	Rwy Idg	7809
047°	TDZE	26
	Apt Elev	27

RNAV (RNP) Y RWY 5

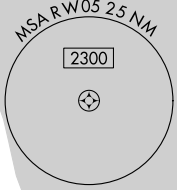
NORFOLK INTL (O.R.F)

<p>For uncompensated Baro-VNAV systems, LNAV/VNAV NA below -9°C (16°F) or above 54°C (130°F). GPS required.</p>	<p>MALSR</p>	<p>MISSED APPROACH: Climb to 2000 on track 047° to TECHI and on track 023° to OUTLA and hold.</p>

ATIS 127.15	NORFOLK APP CON 118.9 353.7	NORFOLK TOWER 120.8 257.8	GND CON 121.9	CLNC DEL 118.5
-----------------------	---------------------------------------	-------------------------------------	-------------------------	--------------------------



RADAR REQUIRED



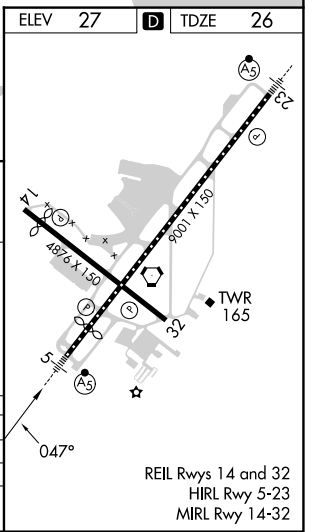
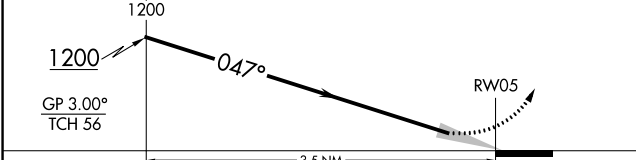
NE-3, 28 NOV 2024 to 26 DEC 2024

NE-3, 28 NOV 2024 to 26 DEC 2024



See planview for multiple IF locations.

2000	↑	tr	047°	TECHI	tr	023°	OUTLA
------	---	----	------	-------	----	------	-------



CATEGORY	A	B	C	D
RNP 0.10 DA		350/26	324 (400-½)	
RNP 0.30 DA		454/40	428 (500-¾)	

AUTHORIZATION REQUIRED