

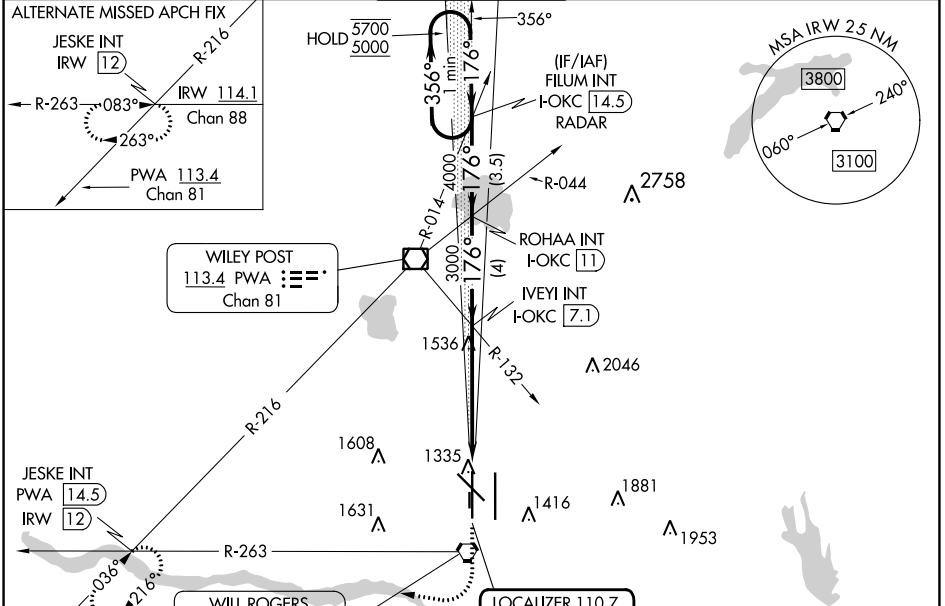
LOC/DME I-OKC 110.7 Chan 44	APP CRS 176°	Rwy Idg TDZE Apt Elev	9800 1282 1296
--	------------------------	-----------------------------	---

ILS RWY 17R (SA CAT II)

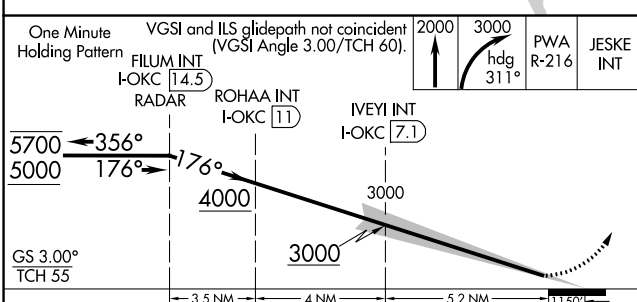
OKC WILL ROGERS INTL (OKC)

RADAR required for procedure entry.		MALSR	MISSED APPROACH: Climb to 2000 then climbing right turn to 3000 on heading 311° and on PWA VOR/DME R-216 to JESKE INT/PWA 14.5 DME and hold.	
ASR Simultaneous approach authorized. Reduced lighting: requires specific OPSPEC, MSPEC, or LOA approval and use of autoland or HUD to touchdown.				

D-ATIS 125.85	OKE CITY APP CON 124.6 266.8	ROGERS TOWER 119.35 269.45	GND CON 121.9 348.6	CLNC DEL 124.35
-------------------------	--	---	-------------------------------	---------------------------

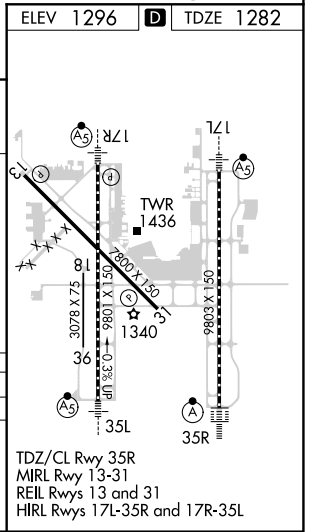


ELEV 1296	D	TDZE 1282
-----------	----------	-----------



CATEGORY	A	B	C	D
5-ILS 17R	RA 102/12		100 DA 1382	

SA CATEGORY II ILS - SPECIAL AIRCREW & AIRCRAFT CERTIFICATION REQUIRED



OKC WILL ROGERS INTL (OKC)
ILS RWY 17R (SA CAT II)

SC-1, 28 NOV 2024 to 26 DEC 2024

SC-1, 28 NOV 2024 to 26 DEC 2024