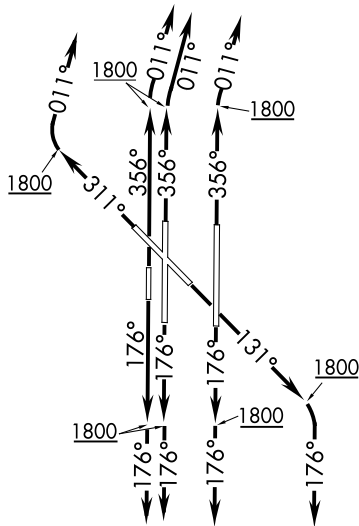


KRMSN FOUR DEPARTURE (RNAV)

**TOP ALTITUDE:
ASSIGNED BY ATC**

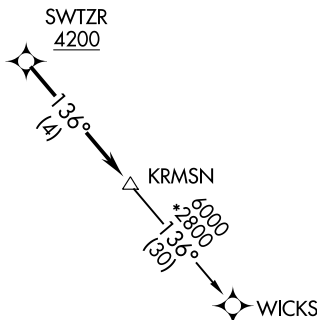
| | |
|------------------|---------------|
| D-ATIS | 125.85 |
| CLNC DEL | 124.35 |
| GND CON | 121.9 348.6 |
| ROGERS TOWER | 119.35 269.45 |
| OKE CITY DEP CON | 124.2 336.4 |



NOTE: RADAR required.
 NOTE: DME/DME/IRU or GPS required.
 NOTE: RNAV 1.

TAKEOFF MINIMUMS

Rwys 13, 17L/R, 18, 31, 35L/R, 36: Standard with minimum climb of 500' per NM to 1800.



NOTE: Chart not to scale.

DEPARTURE ROUTE DESCRIPTION

TAKEOFF RUNWAY 13: Climb on heading 131° to 1800, then right turn heading 176° or as assigned by ATC, expect RADAR vectors to cross SWTZR at or above 4200, thence...

TAKEOFF RUNWAYS 17L/R, 18: Climb on heading 176° to 1800, then heading 176° or as assigned by ATC, expect RADAR vectors to cross SWTZR at or above 4200, thence...

TAKEOFF RUNWAY 31: Climb on heading 311° to 1800, then right turn heading 011° or as assigned by ATC, expect RADAR vectors to cross SWTZR at or above 4200, thence...

TAKEOFF RUNWAYS 35L/R, 36: Climb on heading 356° to 1800, then right turn heading 011° or as assigned by ATC, expect RADAR vectors to cross SWTZR at or above 4200, thence...

... on track 136° to KRMSN, then on (transition). Maintain ATC assigned altitude. Expect filed altitude 10 minutes after departure.

WICKS TRANSITION (KRMSN4.WICKS)

KRMSN FOUR DEPARTURE (RNAV)

(KRMSN4.KRMSN) 07OCT21