

APP CRS	Rwy Idg	9800
176°	TDZE	1282
	Apt Elev	1296

RNAV (RNP) Z RWY 17R

OKC WILL ROGERS INTL (OKC)

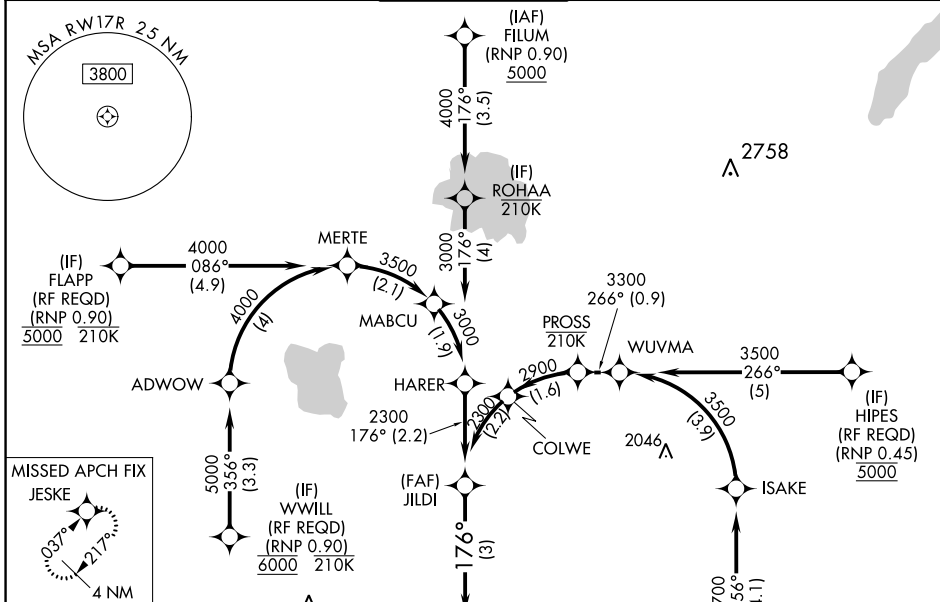
RNP AR APCH.

ASR For uncompensated Baro-VNAV systems, procedure NA below -13°C or above 54°C.
 For inop ALS, increase RNP 0.20 all Cats visibility to RVR 4500 and RNP 0.30 all Cats visibility to RVR 6000. Simultaneous approach authorized. Use of FD or AP required during simultaneous operations.

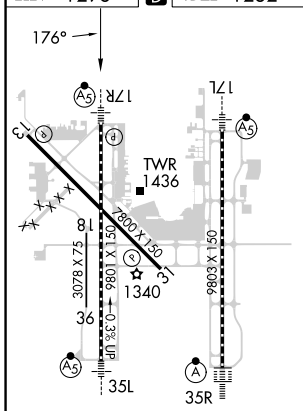


MISSED APPROACH: Climb to 2000 then climbing right turn to 3000 direct JESKE and hold.

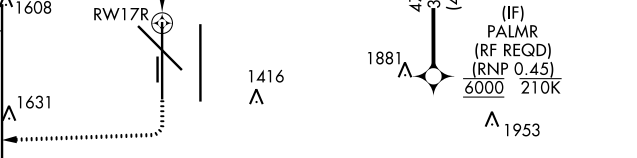
D-ATIS 125.85	OKE CITY APP CON 124.6 266.8	ROGERS TOWER 119.35 269.45	GND CON 121.9 348.6	CLNC DEL 124.35
-------------------------	--	---	-------------------------------	---------------------------



ELEV 1296	D	TDZE 1282
-----------	----------	-----------

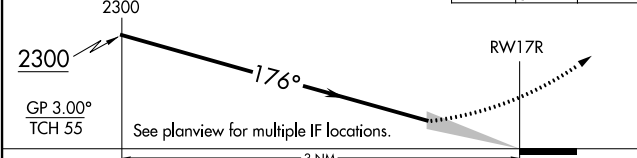


REIL Rwy 13 and 31
 TDZ/CL Rwy 35R
 MIRL Rwy 13-31
 HIRL Rwy 17L-35R and 17R-35L



VGSI and RNAV glidepath not coincident (VGSI Angle 3.00/TCH 60).

2000	3000	JESKE
------	------	-------



CATEGORY	A	B	C	D
RNP 0.20 DA		1559/24	277 (300-½)	
RNP 0.30 DA		1677/35	395 (400-⅝)	

AUTHORIZATION REQUIRED

SC-1, 28 NOV 2024 to 26 DEC 2024

SC-1, 28 NOV 2024 to 26 DEC 2024